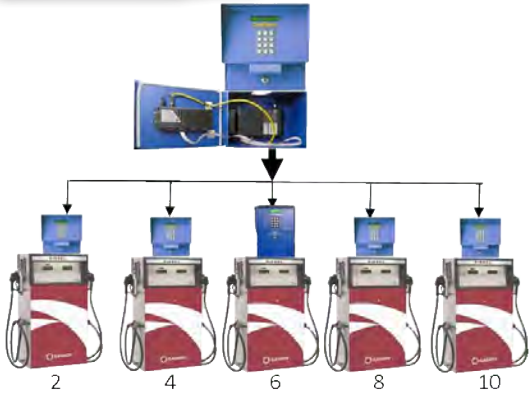


# CardMaster

Access and Control Systems

## Internet Cellular



verizon

CardMaster with Verizon  
to the internet world



Cardlock Vending has been supplying reliable, low cost solutions for commercial and unattended fueling sites since the 80's, and the CardMaster product line since 2001.

### CardMaster's basic family of products for commercial fueling sites



#### CM II Fuel Controller

- Sturdy steel enclosure
- High quality powder coat finish inside and out
- 12 key metallic keypad
- Magnetic stripe card reader standard in all models
- Back-lit LCD 16 character display
- Two 30 amp relays per hose position
- RS-422/485 serial journal port
- RS-422/485 serial data port
- RS-232 data serial port
- Card or Cardless
- Up to 4 miscellaneous fields
- Basic unit is 2 hoses. With Cellular Modem & multipoint splitter up to five(5) duals - 10 hoses



#### CM for access control

and other devices such as air/water, gates, building access, or other devices that can be time controlled.



+



#### Add the CM-VIC

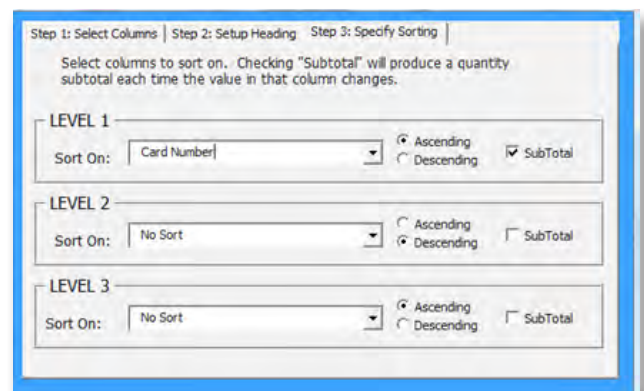
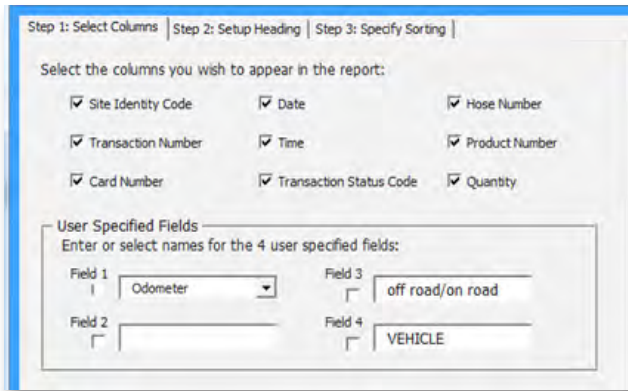
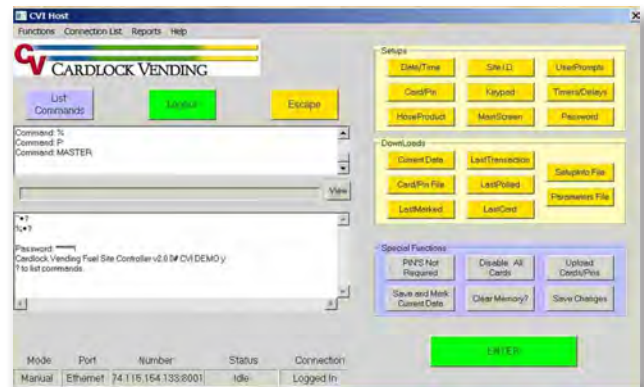
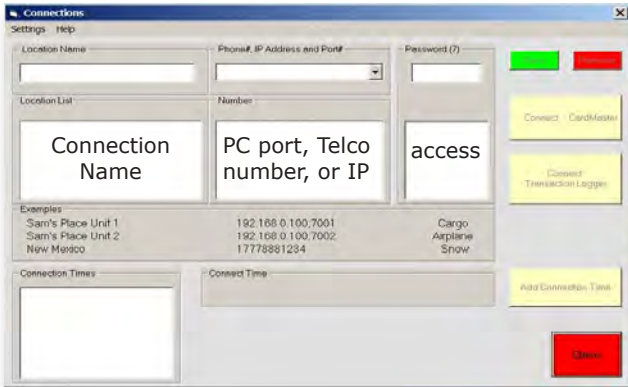
to the basic CardMaster II and you have truly "wireless" communications to your remote fueling sites simply by an IP address on any or all of the company PCs. Connectable at the office, home, hotel, WiFi site, etc...

## What could be better?



What could be better than taking the cost effective, quality CardMaster II fuel controller combined with our internet/cellular modem package on Verizon's network to bring in management data when and where you want it? Simply run on one or all of your network PCs with this truly wireless and cost effective product!

### Sample Screen Shots of System Interface



Miscellaneous fields 1, 2, 3, & 4 can be labeled as you wish, i.e. odometer, badge, department, vehicle, etc...

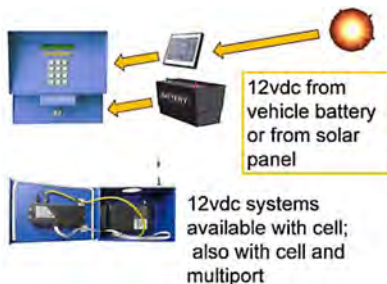
### Sample Report Generated by System

Site	Transaction	Card	Date	Time	Type	Hose	Product	Misc 1	quantity	Misc 2	Misc 3	Misc 4
1	113	10	12/30/2008	10.44	1	1	1	115830	18.6	11	0	0
1	113	10	12/30/2008	10.44	1	1	1	115830	18.6	11	0	0
Site field or Unit # field can be 1 thru 99	Transactions field is a roll over, up to 4 digits	Card Number is a 3 digit field, normally linked to a 4 digit unique PIN	Date is as above	Time is 24 hour, as above	Transaction type is "normal" or a trouble shooting error code	Hose Number, 1 to 9	Product number 1 to 9	6 digit field	6 digit field	6 digit field	6 digit field	6 digit field



**The CardMaster CM-UE**

harsh weather utility enclosure is 20" x 20" x 20" cubed with a fully hinged locking door. The CM-UE can be insulated and for hot environments a fan with thermostat control option is available as well as a heater with thermostat control for cold climates.



**Solar power -or- mobil fuelers**

CardMaster is available with 12vdc for solar sites with optional internet/cellular communications.

- or -

12/24vdc for mobile fuelers, again with optional internet/cellular communications.



**NEW: CM-TDL**

Transaction data logger obsoletes journal printers. No paper jams, ribbon problems, etc. A continuous log of the past 2,000+ transactions, in roll-over memory, easily loaded into a PC by the "interface box" which comes with a USB cable.

**Want or need other communication choices? CardMaster provides choices!**



**CM-RF**

radio frequency wireless from the CardMaster to the building. Install a receiver unit on the building (above any potential obstructions) and run serial cable.

**OR**



**CM-LAN**

local area network module, Ethernet port and serial port. Requires conduit & serial cabling from CardMaster to LAN network.

**OR**



**CM-IM**

internal modem for land line connection to telephone network. Connectable by telephone to capable PCs wherever they are. Requires wires in conduit.

**OR**

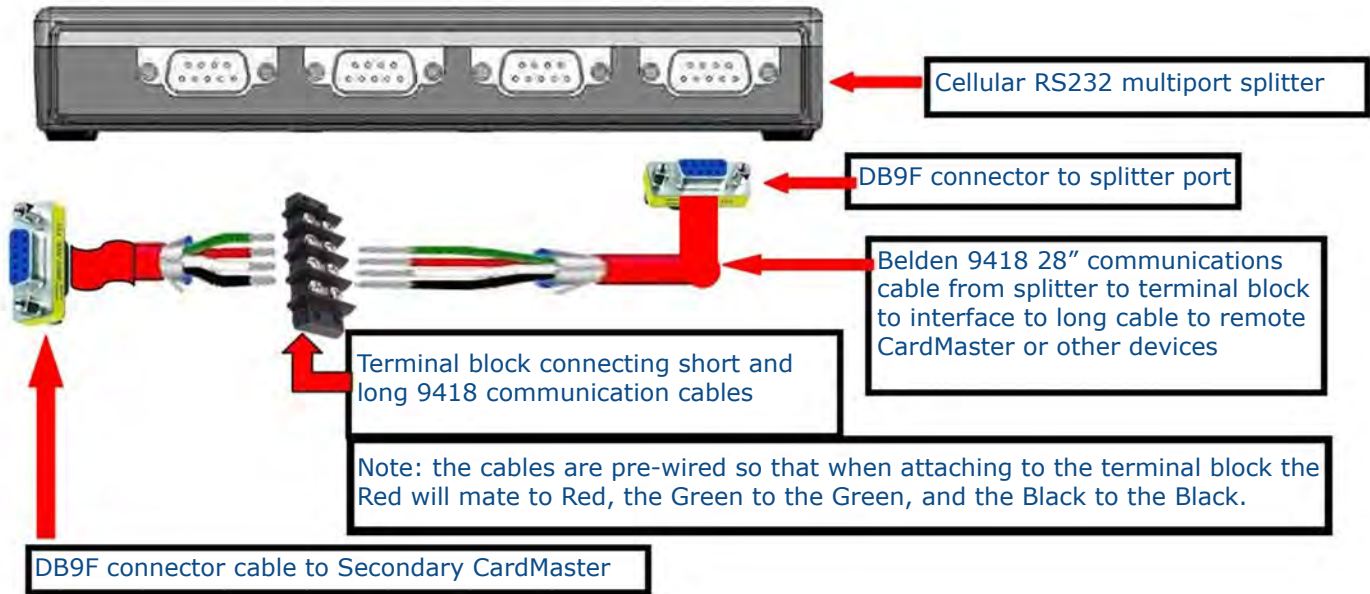


**CM-CSUSB**

Using the serial to USB cable walk out to the CardMaster and poll them to a laptop for the data retrieval. The lowest up front cost, and highest long term cost.



Cardlock Vending has requested that we supply the serial wiring from the cell splitter to the remote CardMaster. The splitter has two (2) RS232m or four (4) RS232M ports. Each port can accommodate an additional CardMaster, tank guage, video camera, or other serial devices.



Cardlock Vending offers Cellular Splitter kits for wiring from the primary CardMaster with the cell modem and multiport splitter to the additional CardMaster's. The most common are sites with two CardMasters, requiring one (1) cable kit. Almost all of these sites are within 50' of each other. RS232 wiring is correct for devices within 50' of each other. For longer distances RS422 wiring is required. New orders will have "pre-wired" interfacing in the primary unit. The installer merely pulls the remote unit cable through steel conduit to the "master" unit from the satellite to the multiport splitter where the interfacing terminal block will be mounted and ready for coupling. The cable ends at the terminal block.



CM-TDL board and CM-TDL-PCI interface box with USB cable to PC. CM-TDL is an electronic transaction journal making paper printers obsolete. Maintains a memory of the most recent 2,000 plus transactions (activities).



CM-RS422USB provides a clear and clean interface of field RS422 wiring from CardMaster back to the central PC, with USB cable (about 5 feet long).

## **RAM** | Remote Asset Management Internet / Cellular from Cardlock Vending

Do you want better control of your remote devices? - Then consider our truly wireless Internet/Cellular product! Remote Asset Management (RAM) makes remote devices simply an IP address on your PCs. How simple can it get? RAM provides 24/7/365 access to manage remote sites. You have access from the office, any WiFi location, hotel rooms, airports, and home offices.

Easily mounted to the CardMaster series 1,2, or 5 ports on a single IP line.



Easily wall mounted, or simply laid on shelf - 1, 2, or 5 ports on a single IP.



ASTs / LPGs



USTs / ASTs



**Remote Security Cameras...**  
**Access Controllers...**  
**What other devices would you like?**



# Item list of CardMaster's models, options, and accessories

CMII-110/220v	CardMaster II, 4 misc. fields, 900 transaction memory, 2 hose controls, 2 relays per hose, RS232 and RS422 communications ports, RS485 journal port
CMdII-12/24v	CardMaster II, 4 misc. fields, 900 transaction memory, 2 hose controls, 2 relays per hose, RS232 and RS422 communications ports, RS485 journal port
CM-DC	CardMaster device controller for fleet car/truck washes, motorized devices, and devices controlled by time. Proprietary cards or keypad entry of the card number, it has 1 misc field, managed by input switches, or timed release, 120vac, RS232, RS422, RS485 ports
CM-GC	CardMaster for Gate Control, uses proprietary card or keypad, 1 misc. field, 2 gate capability, managed by input switches, or timed release, 120/240vac, RS232 port, RS422/485 port
CM-GC6	CardMaster for Gate Control, uses up to six ISO numbers, 110/220v 2 gate capability, managed by input switches, or timed release, 120vac, RS232 port, RS422/485 port
CM-GC-PP	CardMaster for Gate Control, Pacific Pride version
CM-Host.4	Software, terminal functions for dial up modems, IP addressing, and Host4 now includes linking site names to polling connection addresses, required for CM-TDL transaction journal data retrieval
CM-VIC	Internet/cellular communications, wireless at the CardMaster, internet IP address at the customer's PC (s). Location must have cellular signal on the Verizon network. We can pre-determine signal availability with a GPS or physical address
CM-RVIC	Retrofit module, easily retrofitted between the CardMaster and the CM-TP pedestal
CM-MLS-K2	Kit, allowing one Internet/Cellular modem and 1 annual service fee to service two (2) CardMasters (devices) on the same site, require serial wiring between master and satellite unit, which require MLS.RS422 interface kit, one per device with a distance over 50'
CM-MLS-K4	Kit, allowing one Internet/Cellular modem and 1 annual service fee to service five (5) CardMasters (devices) on the same site, require serial wiring between master and satellite unit, which require MLS.RS422 interface kit, one per device with a distance over 50'
CM-TDL	Electronic journal, data back up module, helps protect outside data from loss. Plug & play. ** requires below interface box at the PC
CM-TDL-PCI	** Interface box for extracting data from CM-TDL transaction data logger, USB interface to PC. Multiples may be desired when there are multiple CM-TDL locations
CM-MLS.RS422	RS422 converter with interface to splitter cable for cellular multi-port splitters. Usually required for serial wiring between CardMasters on site
CM-LAN	Local Area Network RJ45 interface module for LAN systems, and/or Ethernet. Note: typically LAN modules on the network must be within 350' of the closest module (node)
CM-RF	RF (radio frequency) serial communications module. RF signals are line of sight, over 400' Requires some indoor serial wiring and below extension cable in most applications
CM-RFCable20	Cable, coaxial, 20 ft., to extend receiver antenna to overcome signal obstructions
CM-CSUSB	Cable, serial db9 to USB, for laptop interface to CardMaster db9 serial port
CM-Cable-DB9	Cable, 9' long, serial, female db9 to male db9, for certain laptops
CM-IM	Telco Internal modem for landline communications to CardMaster
CM-PG	Pulse Generator board, service tech testing tool, and tool for controlled timing
CM RS422USB	Interface box, CM RS422 cable to PC USB, pre-wired, with USB cable for PC interface
CM-UE	Enclosure, outdoor enclosure for CardMaster, tank gauge consoles, etc., 20" x 20" x 20" powder coated steel, see option below for cold climates
CM-UE-Ht	Optional installed insulation & thermostatically controlled heater for above enclosure
CM-WMB	Wall Mounting Bracket
CM-TP	48" tall steel mounting pedestal