



Description

OMNTEC's LU and LPD leak-detection and overflow-alarm systems provide continuous, accurate monitoring in a variety of applications. Typical applications are reservoirs, sumps, dry interstitial spaces and dispenser pans. These easy-to-install controllers alarm for in tank levels and leak conditions. The LU controllers are capable of accepting up to 9 sensors for high level and leak detection. The LPD controllers are capable of accepting up to 9 sensors for in tank levels and product distinguishing leak detection. The electro-optic sensors used with these controllers allow users to easily cycle all sensors through a simulated leak, with the press of a single button. This feature eliminates the need to remove the sensor from its location.

An alarm condition is visually signaled by a dedicated LED indicator, which remains lit until the alarm condition is corrected. Alarm conditions are audibly annunciated via a 95-decibel piezoelectric pulsing horn. RA-series remote annunciators add high-level remote audio-visual alarms without the need for external AC power.

The LU-SP series controllers accommodate a variety of special applications. In addition, LU-OW systems are available for use with Oil Water Separators.

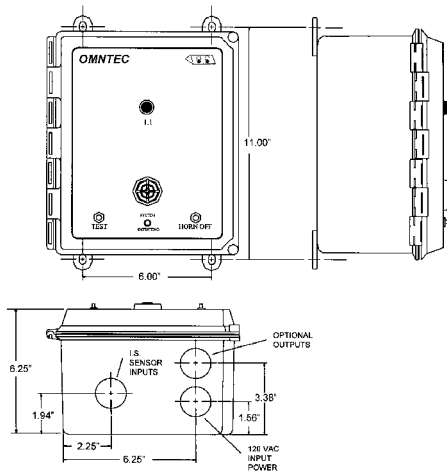
The NEMA 4X rating of the LU and LPD series controllers indicates a weatherproof, corrosion-resistant product. These controllers are ruggedly constructed to provide reliable and cost-effective performance.

Features

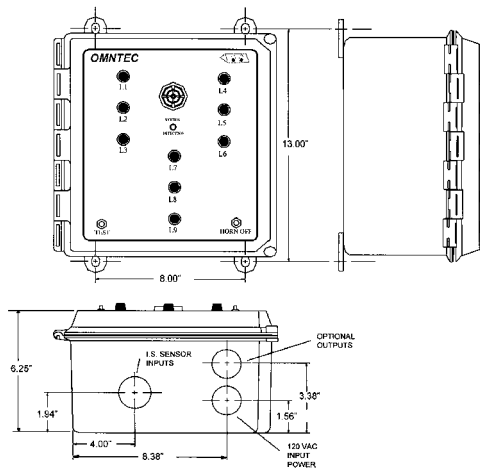
- NEMA 4X weatherproof, corrosion-resistant
- Remote sensor testing
- Acknowledge switch
- Test switch
- System detect light
- Easily installed
- Low-voltage remote annunciator outputs
- Relay outputs (See Specifications)
- LED indicators rated MTBF 11 years
- Specific sensor LED
- Inputs accept either high level, caution level or leak sensors
- Low level alarm (LPD controllers only)
- Distinguishes liquid hydrocarbons from water (LPD controllers only)
- Removable sensor input connectors
- U.L. listed
- Third-party certified
- Cost effective
- Modified controllers for special applications

LU1

LU2, LU3, LU4, LU6 and L1PD2 dimensions are same as LU1

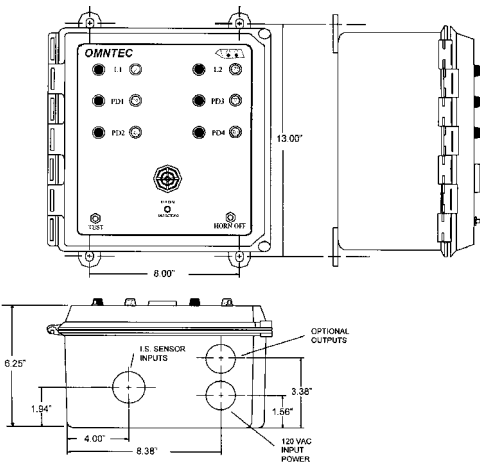


LU9



L2PD4

L3PD6 dimensions are same as L2PD4



Note: Current published specifications are subject to change without notification.

Verify specifications with manufacturer.

For additional information consult factory or pricelist.

Specifications

Enclosure:	NEMA 4X
Power Input:	85-125 VAC, 47-440 Hz 16 watts maximum
Power to Sensor:	2 VDC @ 13 mA Intrinsically safe for Class I, Group D hazardous locations
Sensor Cable:	Shielded 22 AWG with drain wire (OMNTEC EC-4 or EC-12) Maximum length 2,000 feet
Audio-visual Controls:	
Audible alarm:	95 dB pulsing horn
Red lights:	High level alarm (L-Series) Liquid-leak alarm (LWF and LS-ASC)
Amber Light:	Low level alarm (L-Series) Water-leak alarm (PD-Series)
Green light:	Power is on (system detecting)
Horn-off button:	Silences horn (auto time-out also included)
Test button:	Tests entire system electronics, from sensors to control panel
Response Time:	Immediate

Relay Outputs:	SPST normally open dry contact 1.25 amp, 120 VAC Switches when an alarm condition occurs (1 per sensor up to LU3)
Low-voltage Outputs:	12 VDC
Operating Temperature:	0 to 140° F

Compatible Sensors*:	L-1-Series	For high liquid level
(see sensor chart)	L-2-Series	For high liquid level and caution level or high liquid level and low liquid level
	LS-ASC	For liquid-leak detection in both under- ground and aboveground applications For double-wall dry interstice of Xerxes 4-foot fiberglass tanks
	LWF	For double-wall fiberglass dry interstice
	PDS	For product distinguishing liquid-leak detection
	PDWF	For double-wall fiberglass dry interstice
	PDWS	For double-wall steel dry interstice

* Additional sensor applications available with SP and OW controllers

Accessories:	RA-1*
	RA-2*
	RA-3*
	RA-4*
	RA-NYS
* Number denotes number of tanks or alarms	

Weight:	LU1—5 lb.	L1PD2 — 6 lb.
	LU2—6 lb.	L2PD4 — 9 lb.
	LU3—6 lb.	L3PD6 — 9 lb.
	LU4—6 lb.	
	LU6—6 lb.	
	LU9—9 lb.	

Approvals:	U.L. listed 5L04 Third-party certified
------------	---

For technical information:



OMNTEC Mfg., Inc.
1993 Pond Road
Ronkonkoma, New York 11779
Phone: 631-981-2001
Fax: 631-981-2007
Email: omntec@omntec.com
Web Site: www.omntec.com

Leak-Detection Sensors

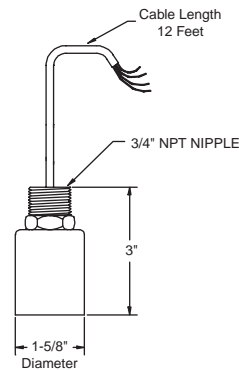


OMNTEC sensors are most known for their ease of installation, reliability, cost-effectiveness and remote testability. Electro-optic technology provides accurate and continuous monitoring. Ruggedly constructed, these solid-state sensors are UL listed and Third-party certified. A distinguishing feature of OMNTEC sensors is that they can be tested remotely with the press of a single button.

LS-ASC

General Purpose Sensor
Sensor for Double-Wall Steel Tanks

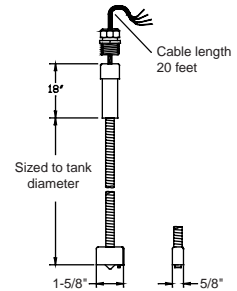
The LS-ASC nondistinguishing sensor was designed to accommodate a variety of applications. With its convenient size and ability to detect liquids at any angle, the LS-ASC sensor is the ideal sensor for sumps, dispenser pans, containment areas and annular spaces of double-wall steel tanks. For product distinguishing use part number PDS for general purpose or PDWS for double-wall steel tanks.



LWF

Sensor for Dry Double-Wall Fiberglass Tanks

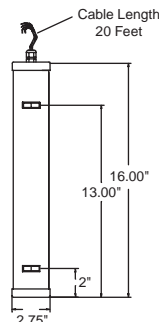
The LWF nondistinguishing sensor was designed to fit into the annular space of dry double-wall fiberglass tanks. With its slim, compact shape and flexible snake-like shaft, the LWF can easily be installed and removed from grade. (When ordering, the part number will denote tank diameter.) For product distinguishing use part number PDWF.



L-R-1

Sensor for Brine-Filled
Double-Wall Tanks

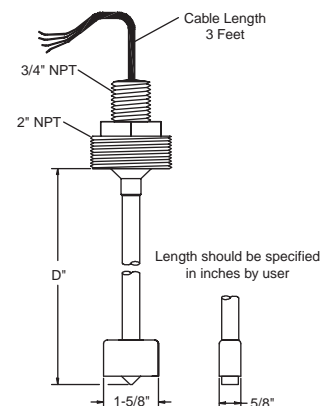
The dual-point L-R-1 sensor is designed for double-wall brine-filled fiberglass tanks. This sensor is made of non-metallic corrosion-resistant materials. An alarm is activated to signal changes in reservoir-liquid level beyond acceptable limits (high or low).



L-Series

Product-Level Sensor

The L-series sensors are designed to provide product-level alarms for high, caution or low product levels. L-series sensors can be remotely tested without removal. This sensor is available with multiple alarm points.

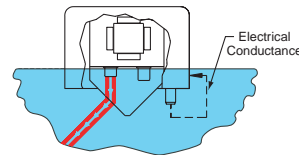
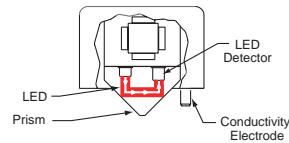


Sensor Specifications

Power Consumption:	2 VDC @ 13mA
Sensor Cable:	Shielded 22 AWG with drain wire (2000ft maximum) (OMNTEC EC-4 or EC-12)
Principles of Operation:	
Normal Condition:	Normally closed beam of light
Alarm Condition:	Normally closed beam of light opens (refracts)
Water Condition:	Conductivity electrode
	(PDS, PDWS and PDWF only)
Response Time:	Immediate
Operating Temperature:	-15 to 140° F
Approvals:	UL-listed, Third Party Approved

Electro-optic Technology with Conductivity for Product Distinguishing

Dry Condition



Wet Condition

SENSOR	APPLICATION	CONTROLLER	PRODUCT DISTINGUISHING
LS-ASC	leak sensor *	LU	NO
LWF	doubewall dry fiberglass	LU	NO
L-1-L,S,D	high level	LU or LPD	NO
PDWF	doublewall dry fiberglass	LPD	YES
PDS	leak sensor *	LPD	YES
L-R-1	reservoir	LPD	NO

* Liquid leak-detection sensors for areas such as doublewall steel tanks, sumps, containment areas, and dispensers pans.

Remote Annunciators



Features

- Easily installed
- No external power required
- Tests remotely
- NEMA 4X weatherproof, corrosion-resistant
- LED indicators rated MTBF 11 years
- High-decibel audible alarm
- U.L. listed
- Cost effective

Enclosure: NEMA 4X (W) 6.75" x (H) 5.50" x (D) 3.75"

Power Input: 12 VDC @ 200 mA maximum

Audio-visual Controls:

Audible alarm (RA-Series):	95 dB pulsing horn
Audible alarm (RA-NYS):	110 dB pulsing horn
Red lights:	Liquid-high level alarm
Horn-off button on controller:	Silences horn

Response Time: Immediate

Operating Temperature: 0 to 140° F

Compatible Controllers:

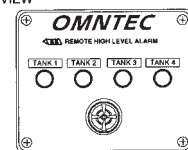
LPD-Series
LU-Series

Wire: 22 AWG minimum

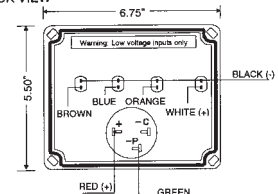
Weight: 1 lb.

Approvals: U.L. listed 5L04

FRONT VIEW



BACK VIEW



OMNTEC Mfg., Inc.
1993 Pond Road
Ronkonkoma, New York 11779
Phone: 631-981-2001
Fax: 631-981-2007
Email: omntec@omntec.com
Web Site: www.omntec.com