

# QTpod™

petroleum  
on demand



Hardware, Software & Accessories

# M3000

## The Clear Leader in Self-Service Fueling

### Custom Graphics:

The front panel provides detailed operating instructions or special advertising.

### Customized Keypad:

The keypad allows for quick selection of products. Color-coded fuel keys reduce chances of mis-fueling and the alphanumeric data entry pad captures tail or registration numbers.

### Reliable Thermal Printer:

Easy to load. No ink ribbons. Receipts won't blow away.

### Large Format High Contrast Backlit Display:

4 lines of 40 characters allows for easy instructions that you define.

### More Custom Graphics:

Promote your brand with a custom logo, provide local advertising, phone numbers, radio frequencies, or taxi instructions.

### Credit Card Reader:

An insertion style card reader is designed to prevent moisture and exclude foreign objects for more up time.

### Large Footprint:

The base provides a large area for electrical access and reduced installation time.



303.962.3413

QTpod.com

# M3000

## Specifications

### Processor

25 MHz processor with 1 MB random access memory and 1 MB non-volatile flash memory. This provides storage for approximately 300 transactions. Data will be retained in excess of one year in the event of a power loss.

### Communications

An internal modem allows the terminal to call for authorization of transactions before fuel is dispensed. The modem uses a single voice-grade dial-up telephone line.

### Display

All M3000 models come with an easy-to-read 40 character by four line large format LCD display that provides plenty of room for detailed operating instructions.

### Card Reader

Easy-to-use insert style card reader captures ANSI track one and track two data. This provides the ability to read and capture the customers names as well as the account number. Capturing customer names allows for creation of customer lists that a business can use for marketing and promotions.

### Thermal Receipt Printer (60 mm)

Prints 40 column receipts which contain all of the pertinent information including date, time, amount, gallons, fuel type, customer name, and total amount of the sale. Thermal technology provides increased reliability and makes changing paper rolls fast and easy.

### Unit Construction

Constructed of sturdy rolled steel with a single tumbler lock to provide plenty of protection for the enclosed computer equipment. Zinc-plated with a tough powder coat finish ensures that the terminal will look good for years to come. Full color custom graphics are available for the terminal face.

### Additional Safety Features

Custom safety features may be displayed prior to allowing fueling. These can be configured to have a customer acknowledge the statement before proceeding.

### Keypad

Rugged membrane style numeric and advanced keypad is included. Advanced keypad allows for selection of fuel type by using color-coded keys. This ensures that the customer receives on the fuel grade requested and eliminates errors often associated with selecting fuel by pump number. This keypad also supports selection of authorized amount by either dollars, gallons or fill-up mode, and allows for tail or registration number entry.

### Standard Hardware Features Dimensions

Terminal top: 23" w x 9.5" h x 14.5"  
Height with pedestal: 48.5"

### Power Requirements

110 VAC 60 Hz, 200 Watts

### Operating Temperatures

-40°F to +130°F

### Hose Control Capability

Standard system controls two hoses; expansion kits available for additional hoses. Up to 16 hoses for some electronic dispensers.

### Pulsar Compatibility

Able to handle pulsar resolutions from 1:1 to 1000:1

### Host Computer Requirements

150 MHz or better Pentium class PC with modem;  
128 MB RAM; Windows XP or newer; hard drive with  
50 MB free space recommended.

### Dispensers

Designed to work with existing or new mechanical and electronic dispensers and registers.

### Siteminder Software Package

The powerful, yet easy-to-use Siteminder software package runs on your PC and is used to set prices, perform unit configuration and retrieve sales activity from your M30000 automated fueling terminal.

Siteminder allows you to use your PC to remotely communicate with the M3000 terminal and generate a number of productivity and business activity reports. See the Siteminder section of this catalog for more information or call your QT sales person.

### Credit Card Processing

QTpod provides the necessary banking relationships for complete credit card processing, from authorization to bank deposits.

### MasterCard, VISA, American Express & Discover

The software package allows you to transmit daily sales to a national processing firm, which deposits the funds directly into a designated bank account. Deposits are available in two business days.

### Oil Company / Private Cards

QTpod accepts all oil company aviation cards as well as private issue cards.

# M3000

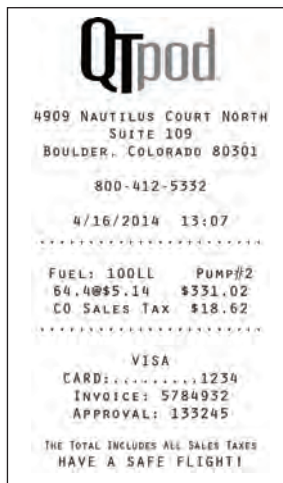
## The Clear Leader In Self-Service Fueling

FEATURES	NO SOFTWARE	SITEMINDER PRO
4-Line Display	●	●
Insert Card Reader	●	●
Thermal Printer	●	●
Numeric Keypad	●	●
Accepts Major Credit Cards	●	●
Accepts Oil Company Cards	●	●
Accepts Private Cards	●	●
Transactions	●	●
<b>Controls 2 Fuel Hoses</b> (Support for up to 16 hose control with certain electronic dispensers)	●	●
Advanced Keypad	●	●
Windows Software - Siteminder		●
Account Management		●
Invoicing		●
Account Detail		●
Basic Discounting		●
Fuel Type Blocking		●
Access Schedules		●
Remote Retrieve Sales		●
Purchases		●
Sales Activity		●
Sales Summary		●
Transaction Detail Log		●
Send Terminal Configuration		●
Send Accounts to Terminal		●
Remote Batch Close		●
Auto Retrieval Schedules		●
Tail / Registration Number Entry		●
Inventory Management		●
Tank Levels		●
Inventory Tolerances		●
Tax Tables		●
Audit Trail		●
Tiered Volume Discounting		●
Export to Excel		●

Features offered with packages are subject to change without notice. Call for details on optional features.

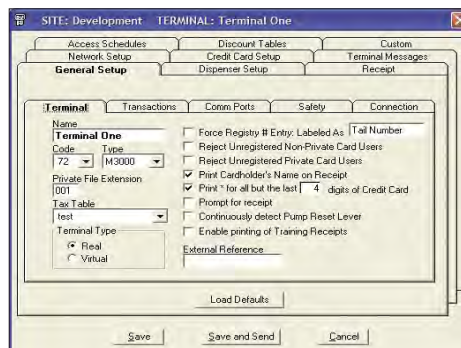
# Siteminder Software

Siteminder Fuel Management Software is a complete fuel management program that comes standard with the M3000 Pro hardware. It is a preferred tool among M3000 installations, with over 80% using the extensive features and functionality on a daily basis. Siteminder allows any time remote monitoring of fuel terminals from any location in the world. You can make fuel price changes on the fly, settle credit card transactions and print reports from its easy-to-use Windows interface.



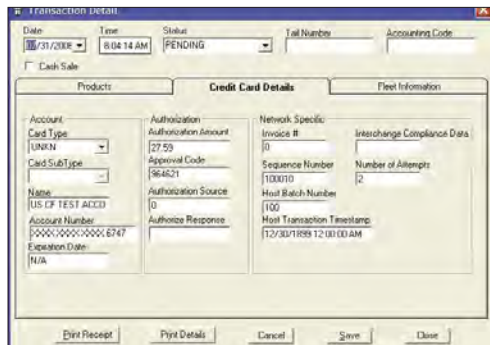
## Customized Receipts:

Customize your sales receipts to encourage repeat business or promote additional sales.



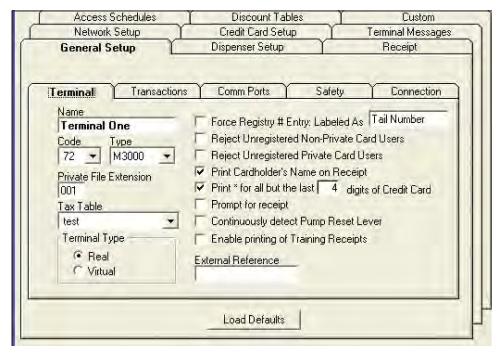
## Transaction Details:

Get detailed information on each and every sale. Create customer lists with the touch of a button.



## Terminal Configuration:

Configure multiple terminals within one simple setup window. Use any phone line to upload the configuration to the M3000.



## Terminal Sales Activity:

Easy to navigate screens allow operator to closely monitor daily operations.

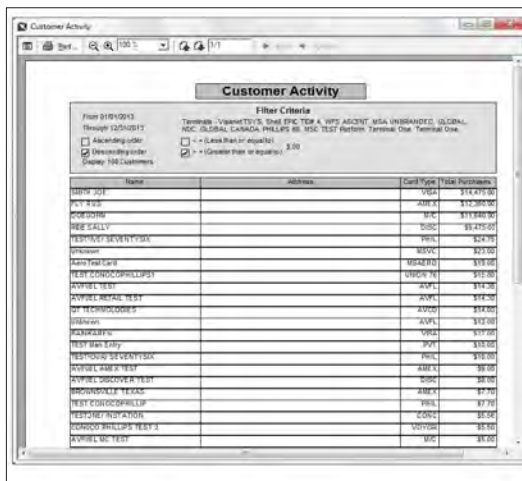


# Siteminder Software

## Track Sales and Inventories

### Customer Activity:

Analyze sales by customer, region and transaction type.



Inventory Reconciliation

Annual Sales Profile

Start date: 1/1/2012 Site: QT EXAMPLE AIRPORT  
End date: 12/31/2012

**Inventory History — Complete Summary**

	Jan	Feb	Mar	Apr	May	Jun	Jul	Aug	Sep	Oct	Nov	Dec
Beg Inventory	533,930	439,217	529,932	625,530	824,137	920,920	929,540	959,993	874,130	829,193	749,752	659,410
Del Purchase	0.00	9,999,000	0.00	0.00	937,000	2,740,000	9,000,000	4,700,000	0.00	0.00	9,800,000	0.00
Adjustment	0.00	(73,800)	0.00	0.00	195,720	0.00	37,820	0.00	0.00	0.00	(96,000)	(187,100)
Carlson Fuel	(229,210)	876,000	(1,168,870)	(2,242,830)	(2,459,920)	(2,681,840)	(3,175,830)	(3,419,160)	(2,416,000)	(1,857,430)	(1,189,810)	(887,880)
END Inventory	48,123.10	1,299,822	8,012,890	3,641,120	6,209,920	3,599,340	8,588,980	9,171,160	6,391,160	2,457,762	3,568,910	3,199,940

**Financial History — Complete Summary**

	Jan	Feb	Mar	Apr	May	Jun	Jul	Aug	Sep	Oct	Nov	Dec
Net Sales	8,613,890	5,644,990	6,722,710	12,360,710	14,407,360	16,205,840	20,224,440	22,869,910	14,966,200	12,201,020	7,463,080	5,519,220
Cost of Goods	8,821,200	2,343,840	5,524,580	10,392,360	11,971,960	12,362,000	15,200,180	16,274,160	12,289,000	4,180,550	5,829,200	4,019,020
Gross Profit	(207,310)	3,301,150	1,198,130	1,968,350	2,435,400	3,843,840	5,024,260	6,595,750	2,677,200	8,020,470	1,633,880	1,500,200

**Monthly Statistics — Complete Summary**

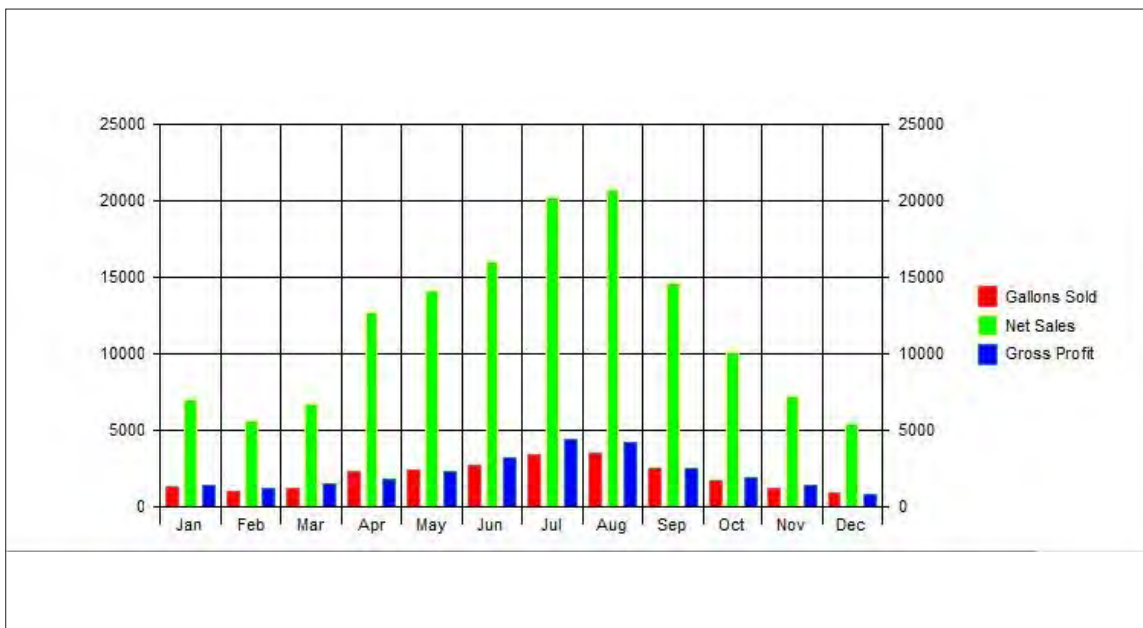
	Jan	Feb	Mar	Apr	May	Jun	Jul	Aug	Sep	Oct	Nov	Dec
Avg Sale \$	159,654	116,621	39,629	104,620	34,662	117,911	429,009	121,662	101,669	101,720	36,896	116,722
Avg Sale Vol	19,192	20,819	19,628	18,463	18,147	19,710	21,667	22,174	18,862	18,540	13,727	19,919
Avg CPU Vol	3,870	3,870	3,870	3,870	3,870	3,870	3,870	3,870	3,870	3,870	3,870	3,870
Avg CPU Unit	4,840	4,437	4,472	4,877	4,910	4,807	4,892	4,774	5,024	5,022	5,021	5,143
Avg Margin Unit	1,047	1,233	1,138	1,783	1,954	1,112	1,238	1,208	1,333	1,148	1,141	1,161
Avg Margin Rate	20,410	25,889	18,340	14,627	15,429	25,109	27,588	26,742	17,207	15,964	17,362	18,813
% of Profit YTD	6.142	4.134	8.910	8.438	15.167	11.552	14.271	14.818	10.213	8.920	4.918	3.764
% of Profit YTD	8.159	4.611	9.440	8.719	8.791	12.092	16.990	14.971	9.941	7.190	3.009	2.731
# of Sales	34,000	47,000	19,000	121,000	149,000	155,000	195,000	194,000	143,000	89,000	74,000	49,000

### Annual Sales Profile:

Gain control of your business with professional reports - Inventory, Financial and Monthly Summaries.

### Sales Summary:

Gain quick insight into your business by viewing activity as fuel sold, net sales and gross profit.



## Accessories



### MultiDisplay™:

Using integrated circuit technology with no moving parts, this reliable counter displays gallons / liters, dollars and total price, meeting state weights & measures requirements. The bright, non-glare red LED lenses makes it easy to see for hundreds of feet, both day and night.

### All Weather Cover:

Custom made for the M3000, this tough and durable cover will protect both the functionality and the appearance of your fueling terminal for years to come. The cover snaps on tight so that it will not come off in weather, while the Velcro® front flap affords easy access to the M3000



### SB-41:

Protect your investment. This robust surge suppressor is designed to protect the M3000 from lightning and electrical surges. M3000's equipped with this item enjoy the added benefit of lightning damage coverage under our initial warranty and Platinum Service Plans.

### QT Sun Shield:

Designed to eliminate sun glare on the display in bright conditions. Will also protect the display from sun damage. Made of stainless steel to prevent rust.



# QTpod<sup>TM</sup>

petroleum  
on demand



Online ordering: [QTpod.com](http://QTpod.com)

For more information:

Phone:

303.962.3413

E-mail:

[Sales@QTpod.com](mailto:Sales@QTpod.com)

[QTpod.com](http://QTpod.com)