



**ULTRATECH**  
INTERNATIONAL, INC

Stormwater Management  
& Construction Compliance

218



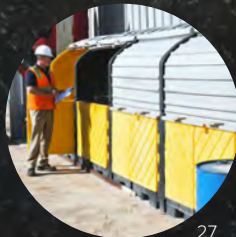
## Ultra-Filter Sock®

Stop oil, gas, heavy metals and  
other pollutants from entering  
the stormwater system.

PAGE  
22



3



27



34



19



13



# Table of Contents

Items are listed alphabetically

New Product ●  
Eco-Smart Product ●  
Made in the USA USA

Absorbent Tarp USA .....	37	Drain Markers USA .....	10	Phos Filter ● USA .....	20
ADA Pads USA .....	38	Drain Plugs USA .....	35	Pipe Socks ● USA .....	22
Basin Guards USA .....	10	Drain Seals USA .....	34-35	Post Protectors USA .....	38
Berm, Containment .....	30-31	Duck Ponds USA .....	30	Pyramid USA .....	16
Bung Access Funnel USA .....	33	Entrance Kit USA .....	17	S3 ● USA .....	39
Burp-Free Funnel USA .....	33	Filter Pads ● USA .....	29	Sampler USA .....	21
Catch Basin Inserts .....	3-9	Filter Socks USA .....	22	Sampling Kit USA .....	21
Concrete Washout Berm USA .....	23	Funnels USA .....	33	Scissor Lift Diaper USA .....	37
Containment Berms USA .....	30-31	Grate Guards USA .....	11	Self Bailers USA .....	33
Containment Sumps ● USA .....	32	Grate Hook .....	23	Silt Dike USA .....	20
Curb Guard Plus ● USA .....	13	Grate Lifter USA .....	23	Site Entrance Kit ● USA .....	17
Debris Screen ● USA .....	14	Grate Pyramid ● USA .....	16	Spill Berms USA .....	36
Dewatering Bags USA .....	19	Gravel Bag USA .....	20	Trench Filter Boom ● ● USA .....	16
Drain Guards ● USA .....	3	Gutter Guards ● USA .....	12	Twin IBC Hard Top USA .....	28
Drain Guard Adjustable Frame ● USA .....	7	Hard Tops ● USA .....	25	Universal Sampler USA .....	21
Drain Guard Curb-Insert ● USA .....	4	Hard Top Plus Models ● USA .....	25-27	Utility Filter Socks ● ● USA .....	17
Drain Guard Heavy Metal USA .....	6	HydroKleen USA .....	8-9	Utility Tray Flexible USA .....	30
Drain Guard High Capacity USA .....	6	Hydrogen Sulfide Removal ● USA .....	39	Utility Trays ● USA .....	29
Drain Guard Microbe Boom ● USA .....	7	IBC Hard Tops ● USA .....	28	Vault Filter Sock USA .....	17
Drain Guard Recycled ● USA .....	5	Inlet Guard & Inlet Guard Plus ● USA .....	10	Warning Pads USA .....	38
Drain Guard Reusable USA .....	5	Microbe Booms ● USA .....	13	X-Tex ● USA .....	15
Drain Guard Ultimate ● USA .....	4	Oil & Debris Blocker ● USA .....	14		
Drain Retainers USA .....	10	Passive Skimmer USA .....	13		



22



29



8



36



27



7

## What is Eco-Smart?

Eco-Friendly + Eco-Nomical + Eco-Logical = Eco-Smart®



UltraTech was the first to recognize the advantage and the reduced impact on the environment that products made of recycled materials could provide. In 1996, we introduced the Economy Model Ultra-Spill Pallet, the first recycled product of its kind in the industry by ANY manufacturer. We've since introduced a number of other products in our spill containment and other product lines that have up to 100% recycled content. But we also continue to strive to provide the best quality products available on the market. So to insure that our recycled Eco-Smart products meet the tough standards of the rest of our line, we will only use our own scrap material in our containment products. In other words, we know exactly what's going into our products. We will not buy recycled resin

from an unknown source or with no known heat history. It is impossible to know what the structural integrity of a recycled containment product is if you don't know what it is made from.

Throughout our catalog you will see the Eco-Smart logo telling you that the product that it is on has up to 100% recycled content. Because of resin availability, production and other manufacturing variables, the exact percentages of recycled material for a product at any given time, can vary somewhat. Eco-Smart is also used to designate products that are bio-degradable, phosphorus-free, use natural materials or assist in recycling. Please feel free to contact us for more specific numbers and information.

### + ECO-FRIENDLY™

Made with up to 100% of recycled resin for environmentally smart and friendly production.

### + ECO-NOMICAL™

Made with a cost-effective method and recycled material for smart savings.

### + ECO-LOGICAL™

Certain load-bearing spill-containment products may not be safe when using 100% recycled resins. By logically blending the smart amount of virgin resin with recycled resin, UltraTech products offer maximum safety, structural integrity, and long life.

# Ultra-Drain Guards®



Keep sediment and other pollutants from entering the water system with Ultra-Drain Guard catch basin inserts

- + This simple, yet specifically designed and engineered geotextile fabric catch basin insert can be installed in most drains. The heavy duty material removes contaminants like litter, sand, and oil from stormwater flow.
- + Installation is quick and easy - Simply raise the grate, place the Ultra-Drain Guard over the opening and carefully lower the grate back into place, pinching the fabric in place to keep the unit secure.
- + Oil & Sediment Model — Removes hydrocarbons, dirt, sand and other contaminants.
- + Oil & Sediment Plus Model — The addition of Ultra-X Tex filter strips increases oil and grease absorption.
- + Trash & Debris Model — Designed specifically to catch larger items and floatables such as leaves, cigarette butts and paper goods.
- + Exceeds 80% sediment removal efficiency.
- + Designed for practical use in industrial facilities, construction sites, parking lots, and “drive-up” retail facilities.
- + Helps comply with NPDES, 40 CFR 122.26 (1999) and TMDL requirements.



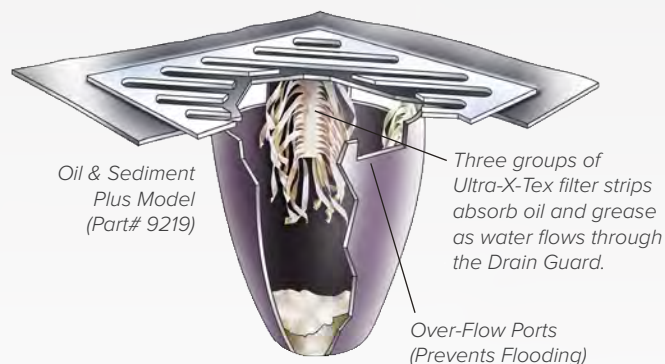
Actual Drain Guard test unit — over 50 lbs. of sediment removed.



Grate Lifter Part# 9234



Grate Hook Part# 9235  
Retainers Part# 9237 or 9238



Custom Sizes Available

U.S. Patent No. 5,372,714; 5,575,925; 6,632,501; 8,715,491

Part#	Description	Dimensions in. (mm)	Performance	Weight per unit lbs. (kg)
9217	Oil & Sediment Model (1-Pack)	48 x 36 x 18 (1,220 x 915 x 458)	Up to .87 gallons (3.5 L) of oil and up to 40 lbs. (18 kg) of sediment	1.0 (0.5)
9218	Oil & Sediment Model (10-Pack)	48 x 36 x 18 (1,220 x 915 x 458)	Up to .87 gallons (3.5 L) of oil and up to 40 lbs. (18 kg) of sediment	1.0 (0.5)
9356	Oil & Sediment Model 60" x 60" (1-Pack)	60 x 60 x 18 (1,524 x 1,524 x 458)	Up to 1.55 gallons (6 L) of oil and up to 40 lbs. (18 kg) of sediment	2.0 (1.0)
9219	Oil & Sediment Plus Model (1-Pack)	48 x 36 x 18 (1,220 x 915 x 458)	Up to 1.38 gallons (5 L) of oil and up to 40 lbs. (18 kg) of sediment	2.0 (1.0)
9220	Oil & Sediment Plus Model (10-Pack)	48 x 36 x 18 (1,220 x 915 x 458)	Up to 1.38 gallons (5 L) of oil and up to 40 lbs. (18 kg) of sediment	2.0 (1.0)
9358	Oil & Sediment Plus Model 60" x 60" (1-Pack)	60 x 60 x 18 (1,524 x 1,524 x 458)	Up to 2.06 gallons (8 L) of oil and up to 40 lbs. (18 kg) of sediment	3.0 (1.5)
9227	Trash & Debris Model (1-Pack)	48 x 36 x 18 (1,220 x 915 x 458)	1 cu. ft. (28 L) (before reaching bypass ports)	1.0 (0.5)
9229	Trash & Debris Model (10-Pack)	48 x 36 x 18 (1,220 x 915 x 458)	1 cu. ft. (28 L) (before reaching bypass ports)	1.0 (0.5)

Options: 9234 Grate Lifter · 9235 Grate Hook · 9237 or 9238 Retainers



# Ultra-Drain Guard® Ultimate Model



The Ultimate In Catch Basin Inserts Removes Dirt, Sediment, Hydrocarbons, And Utilizes An Effective Antimicrobial Coating

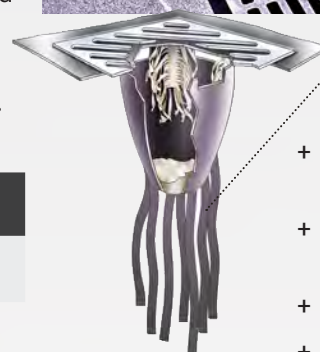


- + Same hydrocarbon and sediment removal capabilities as the Ultra-Drain Guard, Oil & Sediment Plus Model (see page 3) but with additional antimicrobial properties.
- + 1.5" x 20" strips of Ultra-X-Tex AM (Antimicrobial) hang from the bottom of the Drain Guard and become immersed in standing catch basin water, allowing contact with destructive bacteria.
- + Antimicrobial coated Ultra-X-Tex "tentacles" help address stormwater related issues with single-cell organisms (bacteria, fungi, yeast, and algae) that are found in stagnant stormwater and catch basins.
- + Helps comply with NPDES, 40 CFR 122.26 (1999) and TMDL requirements.

U.S. Patent Nos. 5,372,714; 5,575,925; 6,632,501; 7,404,892

Part#	Description	Dimensions	Performance	Weight lbs. (kg)
9376	1 - Pack	48" L x 36" W x 38" H (1,220 mm x 915 mm x 966 mm)	Up to 1.57 gallons (6 L) of oil & up to 40 lbs. (18 kg) of sediment	3.0 lbs. (1.5 kg)
9377	10 - Pack	48" L x 36" W x 38" H (1,220 mm x 915 mm x 966 mm)	Up to 1.57 gallons (6 L) of oil & up to 40 lbs. (18 kg) of sediment	3.0 lbs. (1.5 kg)

For more information on Ultra-X-Tex AM, please visit our website. Custom sizes available.



## Ultra-X-Tex AM Strips:

- + Add hydrocarbon removal capacity
- + Offer antimicrobial coating
- + Reduce odors
- + Reduce mosquitos

# Ultra-Drain Guard® Curb-Insert Model



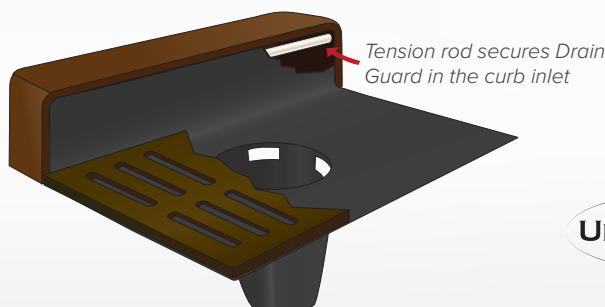
Stop oil, sediment, and other debris from entering curb inlets and catch basins

- + For use with combination catch basins with a street grate and curb opening.
- + Heavy-duty tension rod secures Drain Guard inside curb inlet — stopping sediment and other contaminants from entering curb portion of storm drain.
- + Fits grate sizes up to 40" x 40" and curb inlets up to 60" wide.
- + Helps comply with NPDES, 40 CFR 122.26 (1999) and TMDL requirements.



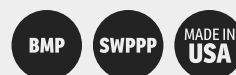
Custom Sizes Available

Part#	Model	For Curb Inlets Sized in. (mm)	Weight lbs. (kg)
9230	Oil & Sediment	24 - 42 (610 - 1,067)	2.0 (1.0)
9231	Oil & Sediment	42 - 60 (1,067 - 1,524)	3.0 (1.5)
9239	Oil & Sediment Plus	24 - 42 (610 - 1,067)	3.0 (1.5)
9240	Oil & Sediment Plus	42 - 60 (1,067 - 1,524)	4.0 (2.0)





# Ultra-Drain Guard® Recycled Model



Keep Oil And Sediment From Entering Catch Basins With Environmentally Friendly Inserts

- + Made completely out of Ultra-X-Tex material — 100% recycled content.
- + Superior water flow rate (151 gal/ft.2), together with built-in overflow ports prevents ponding and flooding.
- + Ultra-X-Tex material captures silt and sediment from runoff in addition to absorbing hydrocarbons.
- + Quick and easy installation — simply lift catch basin grate, lower Drain Guard in place, and replace the grate.
- + Helps comply with NPDES, 40 CFR 122.26 (1999) and TMDL requirements.



9378

U.S. Patent No. 5,575,925

Part#	Description	Dimensions	Performance	Weight lbs. (kg)
9378	1 · Pack	48" L x 36" W x 38" H (1,220 mm x 915 mm x 966 mm)	Up to 1.26 gallons (5 L) of oil & up to 40 lbs. (18 kg) of sediment	1.0 lbs. (0.5 kg)
9379	10 · Pack	48" L x 36" W x 38" H (1,220 mm x 915 mm x 966 mm)	Up to 1.26 gallons (5 L) of oil & up to 40 lbs. (18 kg) of sediment	1.0 lbs. (0.5 kg)



# Ultra-Drain Guard® Reusable Model



Capture dirt and sediment at construction sites and other “high erosion” areas

- + Rugged polypropylene construction can be easily rinsed and reused.
- + Deep accumulation pocket (36") can hold up to 500 lbs. of soil, sand, sediment, and dirt.
- + Designed for easy removal with backhoe, forklift, or other equipment.
- + Custom sizes available.
- + Helps comply with NPDES, 40 CFR 122.26 (1999) and TMDL requirements.



9340

U.S. Patent No. 5,575,925

Part#	Style	Dimensions in. (mm)	Weight lbs. (kg)
9341	Standard Catch Basin	24 x 24 (610 x 610)	1.0 (0.5)
9340	Standard Catch Basin	24 x 36 (610 x 915)	1.0 (0.5)
9342	Standard Catch Basin	24 x 48 (610 x 1,220)	2.0 (1.0)
9332	Curb-Style	24 x 24 (610 x 610)	3.0 (1.5)
9330	Curb-Style	24 x 36 (610 x 915)	3.0 (1.5)
9331	Curb-Style	24 x 48 (610 x 1,220)	3.0 (1.5)





# Ultra-Drain Guard® High Capacity Model



High capacity catch basin insert captures large amounts of sediment and oil

- + Catch basin insert is quickly and easily installed — uses grating and retainer bars (must be purchased separately) to secure in place.
- + Heavy-duty, needle-punched geotextile material absorbs oil, grease, and other hydrocarbons — captures up to 300 lbs. of sediment, dirt, and debris.
- + Large, 3" wide, polyester handling straps help in removal of full units. The use of backhoes, forklifts, or other equipment is recommended for removal of units with large amounts of silt, dirt, and sediment.
- + 60" x 60" skirt fits almost any drain (up to 54" x 54"). Excess material can be trimmed if desired.
- + Helps comply with NPDES, 40 CFR 122.26 (1999) when used as Best Management Practice in Storm Water Pollution Prevention Plans.



U.S. Patent Nos. 5,372,714; 5,575,925; 8,715,491

Part#	Skirt Dimensions in (mm)	Collection Area Dimensions in (mm)	Weight lbs. (kg)	Performance	Flow Rate
9393	60 x 60 (1,524 x 1,524)	24 dia. x 35 Deep (610 x 889)	2.0 (1.0)	Up to 1.9 gallons (7 L) of oil and 300 lbs. (136 kg)	1,000 GPM
9238	Ultra-Drain Guard Retainers - Coated steel retainers hold Drain Guard in place whether grating is removed or installed. Adjusts to fit drains 36"–62" (915 mm x 1,575 mm) Set of 2				

# Ultra-Drain Guard® Heavy Metal Model



Remove heavy metal runoff water at the storm drain

- + Specialized catch basin insert has "quilted" sections sewn into the body of the unit where stormwater flows through.
- + A custom blend of heavy metal removal media is contained in each section (pouch).
- + A non-permeable, PVC skirt at the top of the unit funnels all water to the lower portion of the Ultra-Drain Guard where it is forced to move through the media before it can move on into the storm drain.
- + This BMP removes hydrocarbons, heavy metals, sediment, and other organics from stormwater and industrial runoff.
- + Filterable metals: Rubidium, Lithium, Potassium, Caesium, Ammonium, Sodium, Calcium, Silver, Cadmium, Lead, Zinc, Barium, Strontium, Copper, Mercury, Magnesium, Iron, Cobalt, Aluminum, Chromium
- + Helps comply with NPDES, 40 CFR 122.26 (1999) when used as Best Management Practice in Storm Water Pollution Prevention Plans.



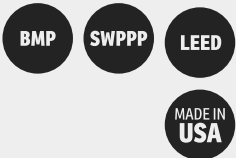
Six pounds of heavy metal removal media is contained in the lower portion of the Drain Guard.

U.S. Patent Nos. 5,372,714; 5,575,925; 8,715,491; Other Patents Pending

Part#	Dimensions in (mm)	Flow Rate GPM (LPM)	Sediment Cap. lbs. (kg)	Oil Cap. lbs. (kg)	Metal Cap. grams	Weight lbs. (kg)
9397	48 x 36 x 18 (1,219 x 914 x 457)	275 (1,040)	30 (13.5)	0.23 (0.87)	190	6.5 (3.0)



# Ultra-Drain Guard® Adjustable Frame Model



Drain Guard stays in place even with grate removed

- + Adjustable catch basin insert quickly re-sizes to fit almost any storm drain – no trimming of excess fabric required.
- + Steel frame adjusts and keeps Drain Guard in place – preventing it from falling into the basin even when the grate is lifted.
- + Heavy-duty hook-and-loop fasteners around the perimeter of the Drain Guard skirt keeps it secured to the frame.
- + Quick and clean installation – no measuring or trimming required.
- + Steel frame can be reused - Replacement Filter Fabric available and is quickly and easily installed.
- + Helps comply with NPDES, 40 CFR 122.26 (1999) and TMDL requirements.



U.S. Patent No. 8,715,491

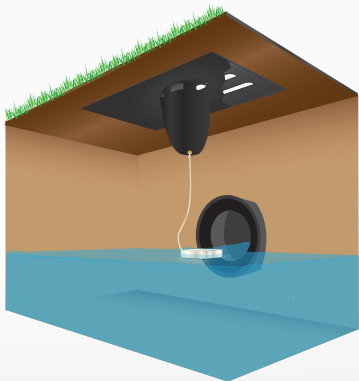
Part#	Qty.	Min Dimensions in (mm)	Max Dimensions in (mm)	Performance	Weight lbs. (kg)
8930	1	16 L x 26 W x 18 H (406 x 660 x 458)	20 L x 32 W x 18 H (508 x 813 x 458)	Up to 1.26 gallons (5 L) of oil and up to 40 lbs. (18 kg) of sediment	7.0 (3.0)
8931	10	16 L x 26 W x 18 H (406 x 660 x 458)	20 L x 32 W x 18 H (508 x 813 x 458)	Up to 1.26 gallons (5 L) of oil and up to 40 lbs. (18 kg) of sediment	7.0 (3.0)
8932	Optional Replacement Filter Fabric, 10-Pack				

# Ultra-Drain Guard® Microbe Boom Model



Capture pollutants above the drain, clean and bioremediate below the drain

- + Dual component product includes Drain Guard to capture pollutants entering drain and a Microbe Boom to clean up the inside of the catch basin.
- + Drain Guard captures dirt, sediment, oil, grease and other pollutants and stops them from entering the water system.
- + The Ultra-Microbe Boom includes a 4' tether and is tied to a grommet in the bottom of the Drain Guard. The Boom floats on the water and oil eating Microbes are released to consume any hydrocarbons present.
- + Helps comply with NPDES, 40 CFR 122.26 (1999) and TMDL requirements.



U.S. Patent Nos. 5,372,714; 5,575,925; 6,632,501; 8,715,491

Part#	Drain Guard Dimensions in (mm)	Microbe Boom Dimensions in (mm)	Weight lbs. (kg)
9800	48 x 36 x 18 (1,220 x 915 x 458)	6 x 4 x 1 (152 x 102 x 25)	2.0 (1.0)



# Ultra-HydroKleen®



## Advanced catch basin filter captures multiple pollutants, also provides sampling capability

- + Removes hydrocarbons, heavy metals, sediment, and other organics from stormwater and industrial runoff.
- + Exceeds 80% sediment removal efficiency.
- + Patented filtration system allows different filter media to be used together to remove targeted pollutants.
- + Choose a mix of filters to remove hydrocarbons/oil, chemicals, odor, phosphorus, and heavy metals from water flow. (Must be ordered separately).
- + By pass system prevents flooding or ponding during high-flow storm events.
- + Excellent post-construction control for drains that are more susceptible to large concentrations of contaminants ("Hot Spots").
- + Units available for round or square catch basin grates. Custom sizes available.\*
- + Considered a "true filter" with separate chambers for sediment removal and filters.
- + Verified by the EPA's ETV program.
- + **Helps comply with NPDES, 40 CFR 122.26 (1999) when used as Best Management Practice in Stormwater Pollution Prevention Plans.**



Mix and match filter media depending on your specific needs. HydroKleen is the only catch basin filter that allows you to use more than one type of filter media.\*

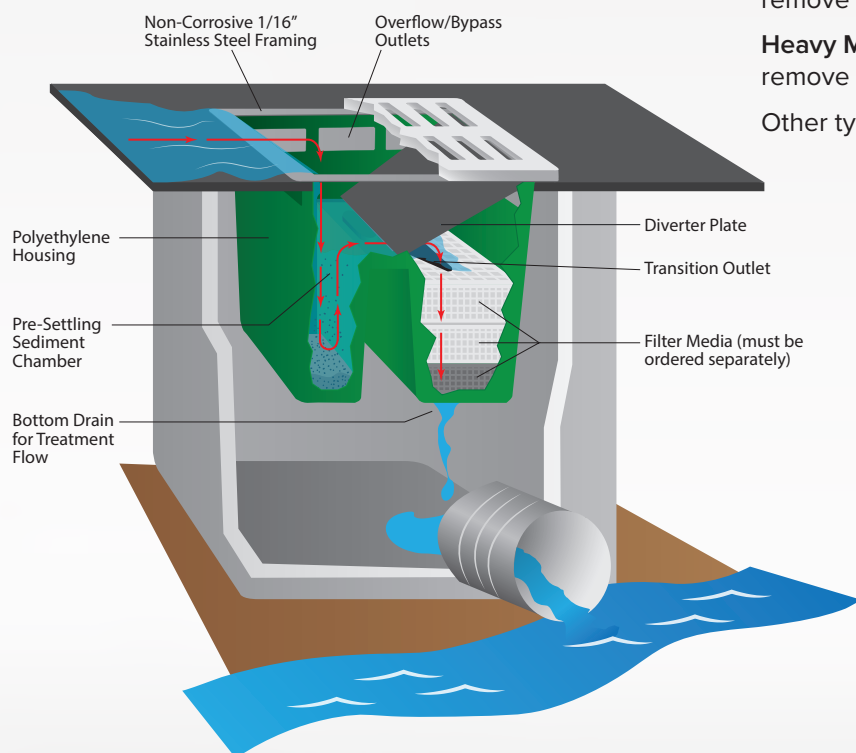
**Sorb 44** — Used to remove oil and other hydrocarbons.

**Phos Filter** — Excellent for removal of phosphorous.

**Activated Carbon** — Excellent "polishing media". Helps remove certain chemicals, hydrocarbons and odors.

**Heavy Metal Removal** — Custom filter media blend helps remove zinc, lead, copper and other harmful, heavy metals.

Other types of media available for custom applications.



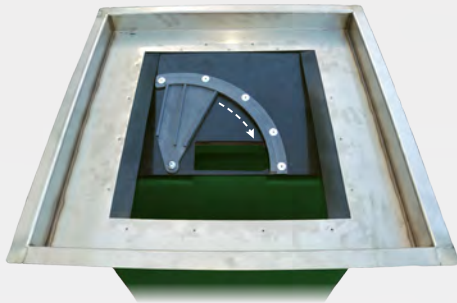
U.S. Patent Nos. 5,820,762; 8,715,491

Part#	Description	Fits Drains in. (mm)
9870	Flat Frame*	20 - 25 (508 - 635)
9871	Flat Frame*	26 - 33 (660 - 838)
9872	Flat Frame*	34 - 48 (863 - 1,219)
9873	Recessed Frame*	20 - 25 (508 - 635)
9874	Recessed Frame*	26 - 33 (660 - 838)
9875	Recessed Frame*	34 - 48 (863 - 1,219)
9478	Custom Frame*	Custom
9876	Optional Sampling Option	—
9463	Media*: Activated Carbon	—
9462	Media*: Sorb 44	—
9461	Media*: Phos Filter	—
9460	Media*: Heavy Metal Removal	—

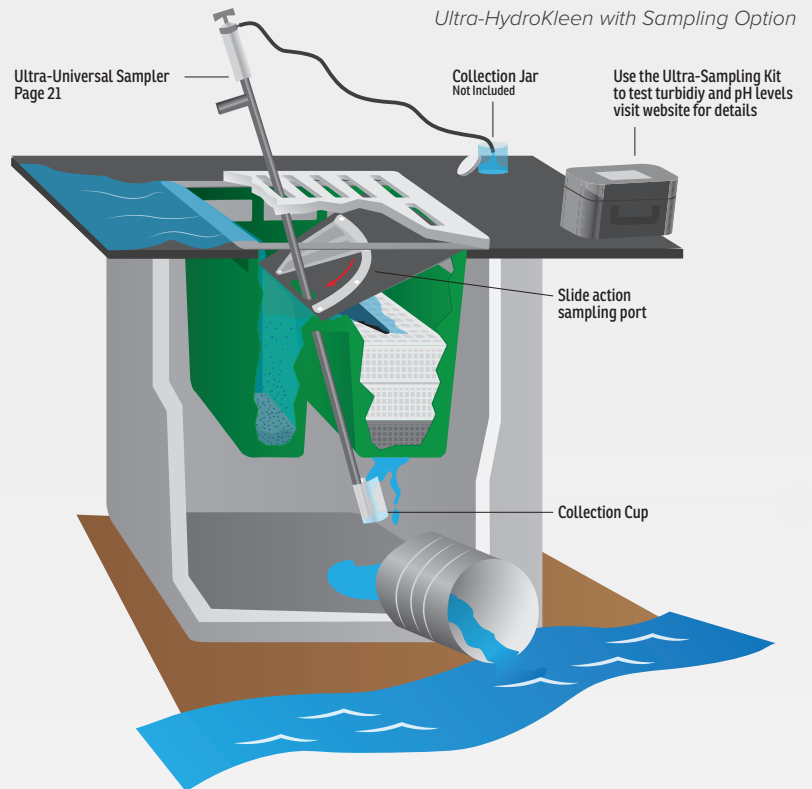
Continued on next page



**Sampling Option — Convenient and effective means to obtain samples of the “post-treatment” effluent from the Ultra-HydroKleen to comply with monitoring and testing requirements.**



- + Sampling Option provides standard HydroKleen with modifications to allow Universal Sampler (pg. 21) to pull “post-treatment” water samples from below the unit’s filters.
- + Take real-time samples during storm events.
- + Access area stays closed until a sample is desired.
- + Simple sampling — No need to remove the Ultra-HydroKleen to take a sample (in many cases, even the grate can remain in place). Simply slide open the sampling port and insert the Universal Sampler.

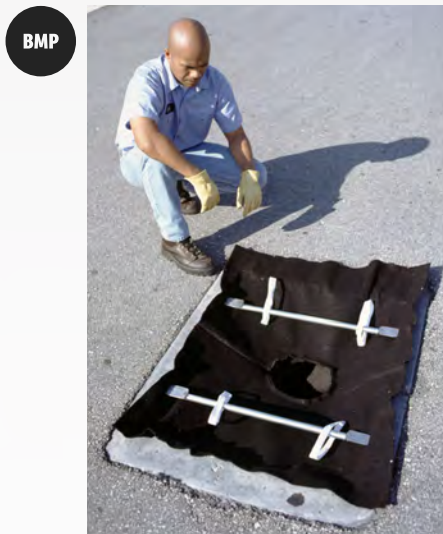


*\* Note: Ultra-HydroKleen units are custom made to fit each individual catch basin. The final pricing is based on the configuration of the frame (Flat or Recessed) and number of required Filter Media (2 or 3). This cannot be determined until the end user has submitted the completed Measurement Instructions and Filter Media Selection forms. Please visit [www.spillcontainment.com/hydrokleen](http://www.spillcontainment.com/hydrokleen) or contact us at 800-353-1611 for more information.*

## Ultra-Drain Guard Retainers®

### Keep Drain Guards In Place Without The Use Of Grates

- + Heavy-Duty coated steel retainers mount on inside ledge of catch basin — securing Drain Guard when grating is removed or installed.
- + Two sizes of telescoping retainers adjust to fit any size storm drain.
- + For use with all Drain Guards.



Part#	Quantity	For Catch Basins in. (mm)	Weight lbs. (kg)
9237	2	22 - 36 (559 - 915)	4.0 (2.0)
9238	2	36 - 62 (915 - 1,575)	6.0 (3.0)

## Ultra-Drain Markers®

- + Helps inform and educate the public that most storm drains go directly into waterways untreated.
- + Installs quickly and easily using permanent adhesive — cleaner and more environmentally friendly than paint and stencils.
- + Designed for long life — heavy-duty plastic construction is scratch-resistant and will not rust or corrode.
- + **Part #9208** includes 25 Markers and adhesive.
- + Helps comply with NPDES, 40 CFR 122.26 (1999).



# Ultra-Inlet Guard & Inlet Guard Plus®

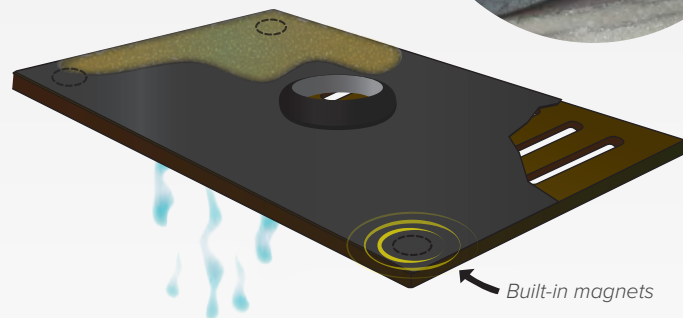


## Protect drains and inlets without lifting any grates

- + Keeps dirt, sand, sediment, trash, and debris out of drains.
- + Quick and easy installation using built-in magnets — no more lifting heavy catch basin grates.
- + Available in several sizes for street drains, combination drains, and trench drains. Custom sizes also available.
- + Heavy-duty, material (non-woven, polypropylene geotextile) allows up to 92 gal/ft<sup>2</sup>/min. through drains.
- + Low profile design can be driven over and is unobtrusive to traffic and personnel.
- + Ultra-Inlet Guard Plus also available. Includes built-in overflow port to help prevent flooding and/or ponding during heavy rainfall.
- + Helps comply with NPDES, 40 CFR 122.26 (1999) and TMDL requirements.



9171



9164 Plus model

U.S. Patent No. 8,715,491; Other Patents Pending

Part#	Dimensions in (mm)	Oil & Sediment	Curb Style	Plus Model	Weight lbs. (kg)
9170	24 x 24 (610 x 610)	•			3.0 (1.5)
9171	24 x 36 (610 x 915)	•			3.0 (1.5)
9172	24 x 48 (610 x 1,220)	•			3.0 (1.5)
9173	24 x 24 (610 x 610)	•	•		3.0 (1.5)
9174	24 x 36 (610 x 915)	•	•		4.0 (2.0)
9175	24 x 48 (610 x 1,220)	•	•		4.0 (2.0)
9160	24 x 24 (610 x 610)	•		•	5.0 (2.5)
9161	24 x 36 (610 x 915)	•		•	5.0 (2.5)
9162	24 x 48 (610 x 1,220)	•		•	5.0 (2.5)
9163	24 x 24 (610 x 610)	•	•	•	5.0 (2.5)
9164	24 x 36 (610 x 915)	•	•	•	5.0 (2.5)
9165	24 x 48 (610 x 1,220)	•	•	•	6.0 (3.0)

Custom Sizes Available

# Ultra-Basin Guards®



## Replace messy hay bales and keep sediment and oil from entering drains and inlets

- + Two standard sizes:  
Part# 9292 fits up to 24" x 24" grates.  
Part# 9293 fits up to 4' x 6' grates.
- + Taller profile helps to identify drains and catch basins in construction sites and overgrown areas.
- + Helps comply with NPDES, 40 CFR 122.26 (1999) and TMDL requirements.



Large, 4' x 6' size is installed by placing on top of grate and securing with gravel or other aggregate.



9292-OS

Part#	Dimensions	Weight lbs. (kg)
9292-0/S	36" Dia. (914 mm)	15.0 (6.5)
9293-0/S	4' x 6' (1,219 mm x 1,829 mm)	16.0 (7.0)

Other stock and custom sizes available



# Ultra-Grate Guards®

BMP

SWPPP

LEED

MADE IN USA



Capture sediment, silt, and other debris before it enters our waterways

- + For use with flat grate catch basins.
- + Allows run-off to flow through while blocking sediment and/or capturing oil.
- + Standard and custom sizes available.
- + Helps comply with NPDES, 40 CFR 122.26 (1999) and TMDL requirements.



Sampling Port option (Part# 9271) allows use of the Ultra-Universal Sampler (see page 21) to test post-treatment.



U.S. Patent No. 5,725,782; 6,632,501; Other Patents Pending

Part#	Model	Dimensions in. (mm)	Weight lbs. (kg)	Absorbent Capacity
9272-SED	Sediment Only	18 x 24 x 4 (458 x 610 x 102)	2.5 (1.0)	-
9278-SED	Sediment Only	24 x 48 x 4 (610 x 1,220 x 102)	3.0 (1.5)	-
9272-O/S	Oil & Sediment	18 x 24 x 4 (458 x 610 x 102)	3.0 (1.5)	Up to 1.0 gallon (3.8 L) of oil per unit
9278-O/S	Oil & Sediment	24 x 48 x 4 (610 x 1,220 x 102)	3.5 (1.5)	Up to 2.6 gallon (9.8 L) of oil per unit

Other stock sizes and custom sizes available. Replacement Ultra-X-Tex pads available for Oil & Sediment Model Ultra-Grate Guards.

# Ultra-Grate Guard Plus®

BMP

SWPPP

LEED

MADE IN USA

Install catch basin filters without removing street grates

- + Units are trimmed to fit almost any size drain. No need to stock multiple products or sizes to fit different drains.
- + Installs quickly and easily with included hardware — grate does not need to be moved or lifted.
- + Built-in overflow port eliminates ponding and flooding during major rainfall events.
- + Helps comply with NPDES, 40 CFR 122.26 (1999) and TMDL requirements.



U.S. Patent Nos. 7,879,233; 8,002,977; 8,715,491

Part#	Fits Grates Up To in. (mm)	Weight lbs. (kg)
9130	48 x 59 (1,220 x 1,499)	2.0 (1.0)

# Ultra-Gutter Guard Plus®

BMP

SWPPP

LEED

MADE IN  
USA

Guard high-flow curb inlets from silt, sediment, and other contaminants

- + Designed for curb inlets with high-flow volumes.
- + Polypropylene outer filter combined with rigid inner frame maintains a low profile to prevent damage from vehicular traffic.
- + Modular, 3-foot inner frames allow for compact transport and storage.
- + Counterweight inserts into inlet to keep unit upright and secure — (7 lb. weight available).\*
- + Tie-back straps on either end of unit can be used with sod pin or stake for additional anchoring.
- + Helps comply with NPDES, 40 CFR 122.26 (1999).



Available in many standard and custom sizes (allow 12" overlap on each side of inlet).

Part#	Dimensions (mm)	Weight lbs. (kg)
9151	6' L x 6" H (1,829 x 152)	10.0 (4.5)
9158	9' L x 6" H (2,742 x 152)	13.0 (6.0)
9154	12' L x 6" H (3,658 x 152)	16.0 (7.0)
9159	15' L x 6" H (4,572 x 152)	20.0 (9.0)
9148 Counterweight	14" L x 1½" dia. (356 x 38)	7.0 (3.0)

\*One weight required for Part# 9151. Two required for all other sizes.

# Ultra-Gutter Guards®

BMP

SWPPP

MADE IN  
USA

Keep sediment and other debris out of curb inlets

- + Made of 100% recycled materials.
- + Can be reused — simply remove, clean, and store properly until needed again.
- + Built-in overflow ports allow water to pass through during major rainfall events.
- + Quick and easy installation — no stakes, weights, or hardware required. Simply place in front of curb inlet assuring at least a 12" overlap on each side.
- + Helps comply with NPDES, 40 CFR 122.26 (1999) and TMDL requirements.



Part#	Dimensions (mm)	Weight lbs. (kg)
9320	9" dia. x 8' L (229 x 2,438)	15.0 (7.0)
9321	9" dia. x 10' L (229 x 3,048)	19.0 (9.0)
9322	9" dia. x 12' L (229 x 3,658)	22.0 (10.0)





# Ultra-Curb Guard Plus®

BMP

SWPPP

LEED

MADE IN USA

Protect curb inlets from sediment-laden stormwater runoff

- + Quick and easy installation.
- + Modular design — build to any length.
- + Units can be quickly and easily connected to form longer lengths.
- + Wedge-shaped, heavy-duty foam secures unit in curb inlet.
- + Woven, polypropylene material provides high flow rate — will not cause ponding or flooding.
- + Helps comply with NPDES, 40 CFR 122.26 (1999) and TMDL requirements.

U.S. Patent No. 7,563,364

Part#	Dimensions in. (mm)	Weight lbs. (kg)
9248	4 dia. x 36 L (102 x 915)	6.0 (3.0)
9251	4 dia. x 48 L (102 x 1,220)	8.0 (3.5)



Modular design allows units to be connected to make any length desired (3 units shown).

## Ultra-Passive Skimmer®

Remove oil permanently from catch basins and storm drains

- + Unique polymer absorbent actually bonds the oil to the polymer matrix and prevents leaching.
- + Will not create ponding or clog due to sediment.
- + One 22" x 14" x 2" unit can hold up to 2 gallons of oil.
- + Floats on water surface — continuously absorbs oil.
- + Helps comply with NPDES, 40 CFR 122.26 (1999) and TMDL requirements.



BMP

SWPPP

LEED

MADE IN USA

Part#	Qty.	Weight lbs. (kg)	Performance
9260	2	7.0 (4.0)	Absorbs up to 2.0 gallons (8 L) of oil per unit
9261	5	19.0 (9.0)	Absorbs up to 2.0 gallons (8 L) of oil per unit

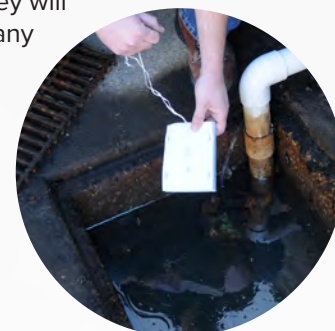
## Ultra-Microbe Booms®

Remove oil and grease from catch basins safely and naturally

MADE IN USA



- + Specially-treated polyethylene foam houses oil-eating microbes. Simply tie off the Boom and drop into the catch basin.
- + Microbes are released as the tablets they are housed in dissolve. Once they are released they will immediately begin eating any hydrocarbons present.



NOTE: All Ultra-Microbe products are stamped with an expiration date and have a typical shelf life of approximately 4 years.

U.S. Patent No. 7,166,221; 7,354,516

Part#	Qty.	Dimensions in. (mm)	Weight lbs. (kg)
5234	6-pack	6 x 4 x 1 (152 x 102 x 25)	7.0 (4.0)

# Ultra-Debris Screen®

BMP

SWPPP

LEED

MADE IN USA

## Stop Debris And Trash From Getting Into Storm Outflow

- + Polyethylene frame and stainless steel screen unit quickly installs over stormwater outflow (up to 18" dia.) — allowing stormwater to pass through freely while keeping litter, leaves, and other debris from escaping.
- + Heavy-duty, polyethylene housing will not rust or corrode and is much more economical than similar all stainless steel units.
- + Made in the U.S.A. with 86% recycled content.
- + Design allows unit to remain installed while replacing screens or changing to overflow mode.
- + Overflow port option available — top two sections of screen are left open for unimpeded water flow.
- + Helps comply with NPDES, 40 CFR 122.26 (1999) and TMDL requirements.



Overflow Port Model

5 mm (nominal) mesh opening allows water to pass through while keeping debris out.



U.S. Patent Pending

Part#	Details	Dimensions in. (mm)	Weight lbs. (kg)
9366	Without Overflow Port	28¾ x 23 x 4¼ (730 x 580 x 108)	5.0 (2.5)
9367	With Overflow Port	28¾ x 23 x 4¼ (730 x 580 x 108)	5.0 (2.5)

# Ultra-Oil & Debris Blocker®

BMP

SWPPP

LEED

MADE IN USA

## Stop Pollutants Before They Can Reach Stormwater Outflow

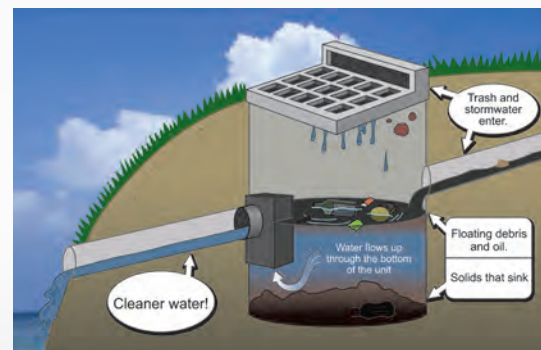
- + Stormwater is forced to flow through bottom of unit — floating trash and hydrocarbons remain on the water's surface and out of the outflow.
- + Installs quickly and easily in storm drain outflows.
- + Low-profile allows vector trucks to clean catch basin without removing the unit.
- + Dual component, all-polyethylene unit will not rust or corrode.
- + Helps comply with NPDES, 40 CFR 122.26 (1999) and TMDL requirements.



U.S. Patent Pending

Part#	Pipe Opening in. (mm)	Pipe Orientation	Dimensions in. (mm)	Weight lbs. (kg)
9380	8 (204)	Center	4½ x 12 x 14 (115 x 305 x 356)	4.0 (2.0)
9381	10 (254)	Right	5½ x 14 x 16 (140 x 356 x 407)	6.0 (3.0)
9382	10 (254)	Center	5½ x 14 x 16 (140 x 356 x 407)	6.0 (3.0)
9383	10 (254)	Left	5½ x 14 x 16 (140 x 356 x 407)	6.0 (3.0)
9384	12 (305)	Center	6½ x 16¾ x 18 (166 x 416 x 458)	7.0 (3.0)
9386	10 (254)	Adapter	9½ x 10 x 12 (242 x 254 x 305)	2.0 (1.0)
9387	12 (305)	Adapter	11 x 12 x 12 (280 x 305 x 305)	3.0 (1.5)

Note: Adapter is required for any 10" and 12" Ultra-Oil & Debris Blocker installation. 8" unit is one piece.



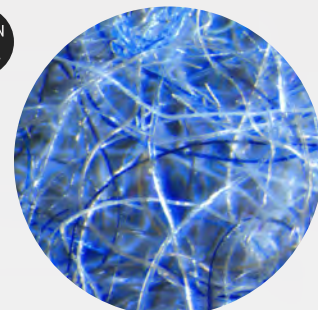




Throughout this catalog, you've seen this logo. So what does it mean? It means that product is available using Ultra-X-Tex material, a lipophilic medium. This material is produced from a patented recycled blend of synthetic fibers. Utilizing state-of-the-art technology, these materials are blended and processed into a lightweight fiber mass with enormous surface area and interstitial spaces creating a high performance sorbent and filter media.

- + Designed for use as a durable long lasting geotextile and filter media.
- + Allows large volumes of water to pass through while sorbing liquid hydrocarbons, including petroleum, animal, and vegetable oils.
- + Cost effective — absorbs an average of 20 times its own weight of liquid hydrocarbons.
- + Great for use in oil/water separators, stormwater and wastewater filtration systems, and water “polishing” applications.
- + Ultra-X-Tex in fabricated forms can help meet NPDES and TMDL requirements. Call us or visit [www.SpillContainment.com](http://www.SpillContainment.com) for more information.
- + When used as a filter medium, water passes freely, while adsorption of target hydrocarbons begins on contact. Extremely efficient due to the enormous lipophilic surface area of the altered fibers.
- + Works well as a fibrous supporting matrix for other water conditioning materials such as selective zeolites, activated carbon, zero-valent iron filings, etc. Ultra-X-Tex can be “conditioned” to remove specific chemical compounds.
- + Approximately 85-90% of sorbed oils can be reclaimed from Ultra-X-Tex and the media reused.
- + In bench-scale testing, Ultra-X-Tex has shown promising results in filtering out emulsified oils and hydrocarbons out of a water stream. This characteristic creates opportunities for the use of Ultra-X-Tex in oil/water separation applications and other hydrocarbon filter projects.
- + Ultra-X-Tex is environmentally benign and user-friendly. It does not leach harmful substances into the environment and when incinerated produces minimal residue or ash.

Ultra-X-Tex® **MADE IN USA**



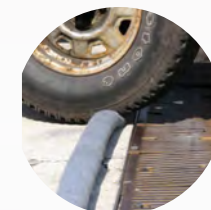
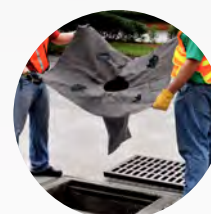
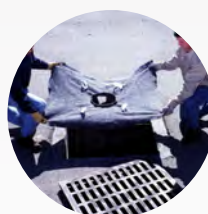
Ultra-X-Tex at 40x magnification.



USED IN OVER  
20 COUNTRIES  
WORLDWIDE

U.S. Patent No. 6,632,501

Part#	Description	Dimensions	Weight lbs. (kg)
9310	Rolled Fabric	60" W x 250' L (1,524 mm x 76 m)	125.0 (57.0)



# Ultra-Grate Pyramid®

BMP

SWPPP

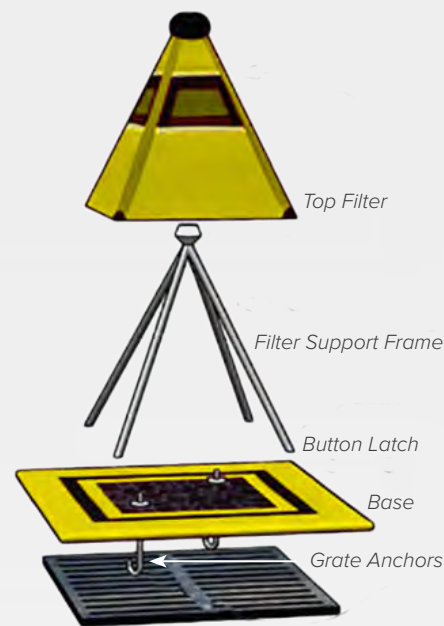
LEED

MADE IN USA

NEW PRODUCT

Protect inlet structures from sediment and debris during construction

- + Reusable inlet protection device covers storm drains keeping dirt, sediment and other contaminants from entering the storm system.
- + Quickly and easily installs on most storm drains. Removal of grating is not necessary.
- + The heavy duty frame forms a sturdy barricade over most drop inlets - providing a prominent marker of where the drain is located.
- + High-flow, geotextile filter skirt stops sediment and debris while allowing the filtered water to enter the catch basin.
- + Built-in overflow prevents ponding during major rain events.
- + Attaches easily with provided attachment hooks.
- + High flow reusable filter provides excellent flow rate. Replacement filters are available.
- + Helps comply with NPDES, 40 CFR 122.26 (1999) and TMDL requirements.



Part#	Description	Dimensions in. (mm)	Weight lbs. (kg)
9185	Fits 39" - 47" Grates	47 x 39 x 48 (1,194 x 991 x 1,219)	30.0 (13.5)
9186	Fits 47" - 49" Grates	49 x 47 x 48 (1,245 x 1,194 x 1,219)	36.0 (16.5)
9187	Fits 50" - 71" Grates	71 x 50 x 48 (1,803 x 1,270 x 1,219)	52.0 (23.5)

Replacement filters available

# Ultra-Trench Filter Boom®

BMP

SWPPP

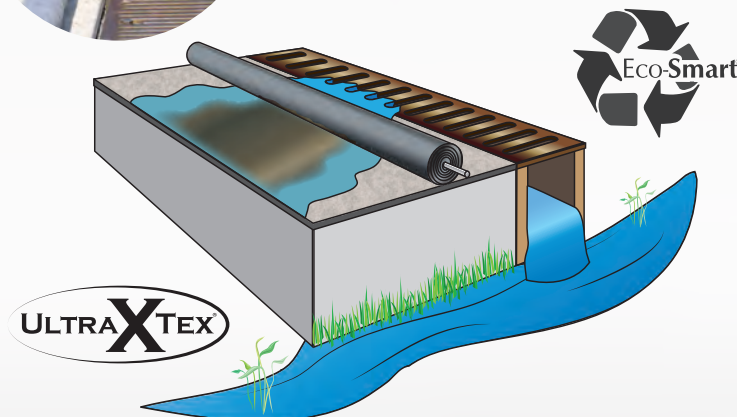
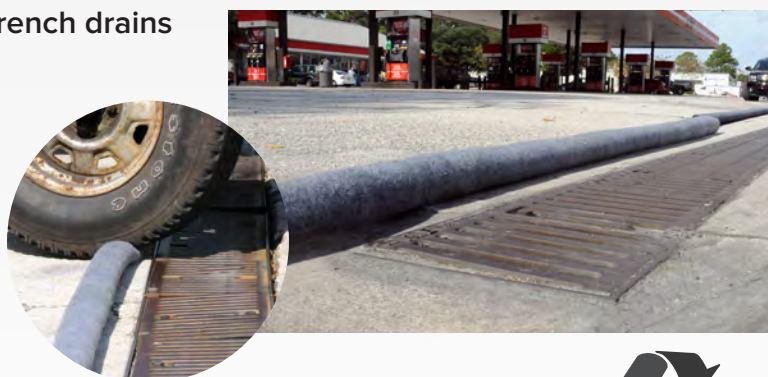
LEED

MADE IN USA

NEW PRODUCT

Stop oil and other hydrocarbons from entering trench drains

- + A simple yet effective solution to keeping oil, gas, fuel and other pollutants out of trench drains.
- + Made with Ultra-X-Tex, a high performance sorbent and filtering media that is capable of absorbing an average of 20 times its own weight of liquid hydrocarbons.
- + Allows large volumes of water to pass through while absorbing liquid hydrocarbons, including petroleum, animal and vegetable oils.
- + The center of the Ultra-Trench Filter Boom is designed to allow rebar (not included) to be inserted - providing additional weight to keep the unit in place.
- + Designed to handle any type of vehicular traffic unlike sorbent 'socks' which burst or deform when driven over.
- + Helps comply with NPDES, 40 CFR 122.26 (1999) and TMDL requirements.



Part#	Dimensions in. (mm)	Weight lbs. (kg)
9703	3 dia. x 96 (76 x 2,438)	2.0 (1.0)



# Ultra-Utility Filter Socks®



## Filter oily water from utility vaults

- + Remove visible oils and other contaminants such as PCBs from utility vaults, manholes, bilges and other holding areas.
- + Testing results have shown 99.4% TSS removal and removal of oil and grease to non-detectable levels.
- + Available with or without a quick-connect cam fitting.
- + High flow rate.
- + Includes 5 gallon bucket with locking lid.
- + Filters out suspended solids to meet NPDES II Regulations.
- + Helps comply with NPDES, 40 CFR 122.26 (1999).



U.S. Patent No. 6,632,501

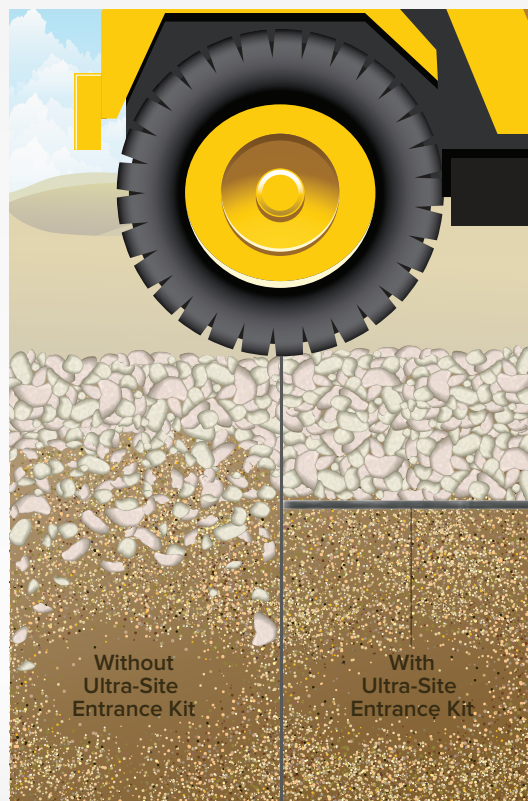
Part#	Description	Dimensions in. (mm)	Weight lbs. (kg)
7152	Without cam fitting	4 dia. x 68 L (102 x 1,727)	12.0 (5.5)
7153	With cam fitting	4 dia. x 68 L (102 x 1,727)	14.0 (6.5)

# Ultra-Site Entrance Kit®



## Stabilize soil at construction site entrances

- + Available in 50' and 100' lengths (12.5' width is standard) – no need to buy an entire roll.
- + Self-contained kits include 12" pins to keep material secured and in place.
- + Fabric is slit film, 200 lb. woven geotextile – excellent for soil stabilization and separation applications.



Part#	Dimensions ft. (m)	Weight lbs. (kg)
8700	12½ x 50 (3.8 x 15.3)	26.0 (12.0)
8702	12½ x 100 (3.8 x 30.5)	51.0 (23.0)

# Basic Requirements of a Stormwater Pollution Prevention Plan

As outlined in NPDES, 40 CFR 122.26 (1999)

## SWPPP

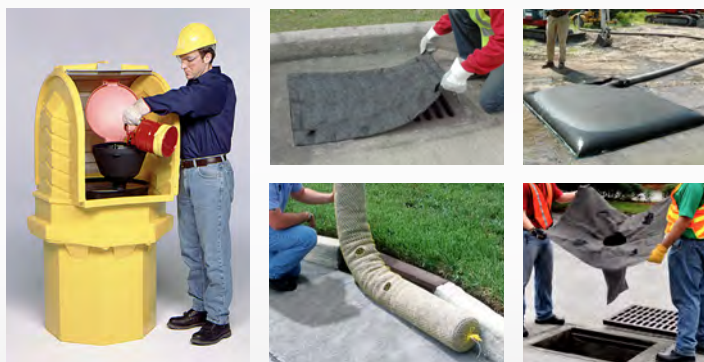
A **Stormwater Pollution Prevention Plan (SWPPP)** is basically an erosion, sediment and waste chemical control plan. It is up to the permit holder to decide what types of Best Management Practices (BMPs) to use at a given site, but the company/municipality/contractor must comply with the permit requirement. SWPPPs will typically include:

- Site Description with a map.
- A description of the sediment, erosion and polluted water controls used on-site, including stabilization and structural practices (such as seeding, and catch basin inserts like the Ultra-Drain Guard or Ultra-Grate Guard).
- Descriptions of the BMPs to control stormwater runoff after completion of a construction activity or as a part of a long term maintenance plan.

### What are the Permit Requirements?

Permit holders are required to develop, implement and enforce a stormwater management program to:

- Reduce the discharge of pollutants to the Maximum Extent Practicable (MEP).
- Protect water quality.
- Satisfy the appropriate water quality requirements of the Clean Water Act.
- Submit a Notice of Intent (NOI) which includes BMPs to be used, measurable goals, frequency of actions and responsible persons.



## BMP

### What are Baseline BMPs?

- Good Housekeeping: reduce spill potential, routine inspections.
- Preventive Maintenance: maintain pipes, pumps, drum/tank storage and stormwater devices.
- Visual Inspections: signs of obvious stormwater contamination in outdoor storage and processing areas.
- Spill Prevention and Response: spill containment of drums and tanks, spill clean-up procedures, easily accessible spill response products.
- Sediment and Erosion Control: control methods for high erosion areas due to topography activities or other factors.
- Runoff Management: flow diversion, filtering using catch basin inserts, use of sumps, berms, mitigative techniques such as vacuuming, use of sorbents.

### What are Advanced BMPs?

- Vegetated Filter Strips
- Detention Basins and Ponds
- Catch Basin Filters (disposable)
- Passive Skimmers
- Litter Removal Devices
- Silt Fences
- Drain Inlet Inserts
- Permanent Catch Basin Inserts

### Partial List of Industries Requiring a Stormwater Pollution Prevention Plan

- |             |                     |            |
|-------------|---------------------|------------|
| • Paper     | • Paint             | • Food     |
| • Wood      | • Metals            | • Minerals |
| • Chemical  | • Transportation    | • Textiles |
| • Cosmetics | • Fertilizer        | • Marine   |
| • Petroleum | • Building Products | • Plastics |



# Ultra-Dewatering Bags®

BMP

SWPPP

LEED

Contain sediment and oil pumped out during dewatering operations

- + Retains both oil and sediment, offering a combination of benefits not available in alternative dewatering bags.
- + Standard and custom sizes available.
- + Accommodates up to 4" discharge hose.
- + Helps comply with NPDES, 40 CFR 122.26 (1999) when used as Best Management Practice in Stormwater Pollution Prevention Plans.

Custom sizes available

Part#	Dimensions ft. (mm)	Capacity cu. ft. (L)	Weight lbs. (kg)
9729-0/S	3 x 4 (915 x 1,220)	6 (170)	2.0 (1.0)
9724-0/S	6 x 6 (1,829 x 1,829)	18 (510)	5.0 (2.5)
9725-0/S	10 x 15 (3,048 x 4,572)	150 (4,247)	21.0 (9.5)
9727-0/S	15 x 15 (4,572 x 4,572)	225 (6,371)	30.0 (14.0)
9739	Optional Hose Connector for 4" hoses		2.0 (1.0)



Ultra-Hose Connector makes connecting and disconnecting Dewatering Bags quick and easy — comes with quick-release hose clamp.

## Ultra-Dewatering Bag® Reusable Model

BMP

SWPPP

LEED

MADE IN USA

Reusable dewatering bag for large jobs and big savings

- + Use for dewatering operations with large quantities of silt, sediment, or dirt. Bags can be emptied and reused repeatedly.
- + Large 3'–5' opening allows easy access and removal of trapped sediment.
- + Galvanized steel Locking Rods (Part# 9735) are quickly and easily installed to secure bag opening during dewatering.
- + Helps comply with NPDES, 40 CFR 122.26 (1999).

U.S. Patent Pending

Part#	Description	Dimensions ft. (mm)	Weight lbs. (kg)
9730	Bag with Locking Rods	3 x 5 (915 x 1,524)	19.0 (9.0)
9732	Bag with Locking Rods	5 x 7 (1,524 x 2,134)	21.0 (9.5)
9735	Locking Rods only	-	13.0 (6.0)
9736	Replacement Bag	3 x 5 (915 x 1,524)	4.0 (2.0)
9738	Replacement Bag	5 x 7 (1,524 x 2,134)	6.0 (3.0)



Use on truck beds to quickly and easily transport filled Dewatering Bag to site for emptying.



# Ultra-Gravel Bag<sup>®</sup>



## Heavy-Duty Bags Provide Quick And Easy Sediment And Erosion Control

Gravel bags are a basic BMP (Best Management Practice) used to meet regulatory requirements for stormwater and erosion control. The sizes are industry standard and allow the user to fill them up with as much or as little gravel (not included) as the application requires. Different sizes lend themselves to different applications; from drain protection to erosion control at construction sites.

- + Made of very high quality polymer material that is woven into shape — eliminates the flaws and failures of sewn edges.
- + High UV rating allows multi-year life in sun and elements.
- + Rugged material and construction can, in most instances, withstand being driven over, a typical problem with lesser bags.



Part#	Description	Dimensions yd. (mm)	Color	Quantity	Weight lbs. (kg)
9780	Ultra-Gravel Bag, Individual	19 x 28 (483 x 711)	Orange	250 bags/box	60.0 (28.0)
9781	Ultra-Gravel Bag, Roll Form	19 x 250 (483 x 228.5)	Orange	1 continuous roll	75.0 (34.0)
9782	Ultra-Gravel Bag, Individual	11 x 48 (280 x 1,220)	Green	250 bags/box	60.0 (28.0)
9783	Ultra-Gravel Bag, Individual	11 x 96 (280 x 2,439)	Green	125 bags/box	60.0 (28.0)
9784	Ultra-Gravel Bag, Roll Form	11 x 250 (280 x 228.5)	Green	2 continuous rolls	80.0 (36.0)

# Ultra-Silt Dike<sup>®</sup>



## Triangular silt dike barrier systems help contain eroded soils

- + Designed as an effective and economical alternative to straw bales, silt fence and rock check dams.
- + Aprons on either side of Dike prevent erosion and failure of the structure. Optional, U-shaped wire staples help secure unit in place and conform to rough terrain.
- + Multiple units can be installed side-by-side for larger areas.
- + Other uses include: ditch check dams, diversion dikes, drop inlet protection, continuous barrier, temporary ditch liner, stream, and pond protection.



U.S. Patent No. 5,605,416

Part#	Dimensions in. (mm)	Weight lbs. (kg)
9712	84 x 67 x 10.5 (2,134 x 1,702 x 267)	8.0 (3.5)
9714	Optional U-Shaped Staples	

# Ultra-Phos Filter<sup>®</sup>

- + Phos Filter is an engineered filtration media that has the unique ability to filter and retain up to 1 1/2 times its weight in phosphorous. It has been shown to remove over 90% of phosphorous in its particulate and dissolved forms.
- + Testing done by the South Florida Water Management District at a local cattle ranch showed a phosphorous removal rate that exceeded 90%. (More testing information is available upon request.)
- + Helps comply with TMDL requirements.



## Applications Include:

- Urban Runoff
- Animal Farms
- Ponds & Ditches
- Citrus Groves
- Catch Basins
- Sugar Farms
- Bioretention Systems
- Golf Courses
- Wetland Restoration

Visit website for more information



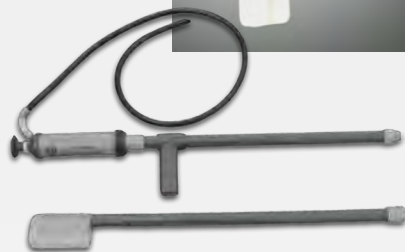
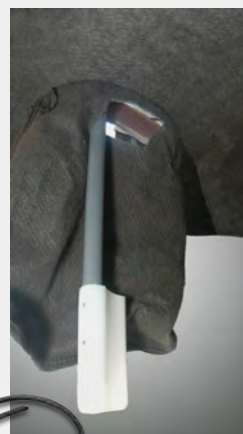
# Ultra-Universal Sampler<sup>®</sup>



Sample water after it has been filtered by your catch basin insert without removing the grate

- + Water sampling can now be done after your catch basin insert or other stormwater management device has filtered the effluent.
- + Helps meet regulatory sampling requirements.
- + Built-in pump draws collected water in cup and channels it through attached hose into jars or containers so water can be tested.
- + Unit disassembles for easy storage and shipping.
- + All PVC unit will not rust or corrode.

*Collection cup at end of device fits through most drains and overflow ports in catch basin inserts and other treatment products.*



U.S. Patent Pending

Part#	Dimensions in. (mm)	Weight lbs. (kg)
9247	40 x 8 x 3 (1,016 x 203 x 76)	5.0 (2.5)



# Ultra-Sampling Kit<sup>®</sup>



Convenient, Economical Kit Makes Stormwater Sampling Quick And Easy

- + Kit includes everything needed for accurate measurement and testing of pH and turbidity levels.
- + Helps comply with NPDES sampling and monitoring requirements of individual permits.
- + Microprocessor based turbidity meter provides laboratory precision for field turbidity measurements.
- + pH meter has a water and dustproof housing and is designed for use in dirty and damp field conditions — ergonomically designed LCD allows measurements to be seen at a glance.



## Kit Includes:

- Turbidity Meter
- pH Meter
- pH and Turbidity Meter Calibration Solution
- Durable Case
- Data Book
- Lint-Free Wipes
- Nitrile Gloves



# Ultra-Filter Socks®



Stop harmful substances from entering the stormwater system

- + Use in front of storm drains, around downspouts, in gullies, and ditches, or anywhere there is potential for harmful stormwater runoff.
- + Woven polymer casing allows water to pass through quickly while filtration media inside removes pollutants.
- + Available in 9-foot lengths. Units can be overlapped for longer coverage.
- + Looped ends allow units to be staked in place and also assist in transport.
- + Available with different types of media depending on which pollutant is present.
- + Option for heavy-metal removal available.



"Multiple Ultra-Filter Socks can be used in a "treatment train" if the potential for more than one contaminant or a large quantity of a single contaminant is present.



## Media Descriptions

- **Activated Carbon:** Excellent "polishing media". Helps remove certain chemicals, hydrocarbons and odors.
- **Sorb 44:** Used to remove oil and other hydrocarbons.
- **Sediment Removal:** Recycled rubber media provides weight, keeps unit in place, allows maximum water flow.
- **Phos Filter:** Excellent for removal of phosphorous.
- **Heavy Metal Removal:** Custom filter media helps remove zinc, lead, copper and other harmful, heavy metals.

Part#	Description	Dimensions in. (mm)	Weight lbs. (kg)
9453	Activated Carbon	108 x 7 x 4 (2,743 x 178 x 102)	40.0 (18.0)
9455	Sorb 44	108 x 7 x 4 (2,743 x 178 x 102)	15.0 (7.0)
9457	Sediment Removal	108 x 7 x 4 (2,743 x 178 x 102)	40.0 (18.0)
9456	Phos Filter	108 x 7 x 4 (2,743 x 178 x 102)	66.0 (30.0)
9454	Heavy Metal Removal	108 x 7 x 4 (2,743 x 178 x 102)	35.0 (16.0)

# Ultra-Pipe Socks®



Control the flow of sediment and oil out of headwall and other types of pipes

- + Also use in pond applications where vertical pipes extend above the water surface, and preventing sediment in-flow during high-water events is required.
- + Several standard and custom sizes available.
- + Helps comply with NPDES, 40 CFR 122.26 (1999).



9705-O\S

U.S. Patent No. 6,632,501

Part#	Description	Dimensions in. (mm)	Weight lbs. (kg)
9705-O\S	Oil & Sediment	8 dia. x 60 L (204 x 1,524)	3.0 (1.5)
9706-O\S	Oil & Sediment	12 dia. x 60 L (305 x 1,524)	3.0 (1.5)
9707-O\S	Oil & Sediment	16 dia. x 60 L (407 x 1,524)	3.0 (1.5)



## Ultra-Grate Lifter®

- + Ergonomically designed — minimizes potential injuries associated with heavy lifting.
- + Allows single-person grate lifting — reduces personnel and maintenance costs.
- + Disassembles quickly for easy transport — optional two-piece carrying case available (Part# 9241).
- + Part# 9234, 74 lbs. (34 kg).



## Ultra-Grate Hook®



- + Heavy duty steel hook fits all grates — protects hands from injury.
- + Part# 9235, weight 4 lbs. (2 kg).

## Ultra-Concrete Washout Berm®



### Economical containment for concrete washout

- + Portable solution for harmful industrial concrete sediment, paint, drywall mud, stucco and mortar.
- + UV resistant, 10 mil polyethylene.
- + Unfolds for simple and quick set up in seconds.
- + Compatible with mixer, pump trucks, and wheel barrows.
- + Built-in tie-downs allow Berm to be secured to standard wooden pallets for easier handling and transport.
- + Dispose of after evaporation and job completion.



Part#	Dimensions in. (mm)	Capacity gal. (L)	Weight lbs. (kg)
3512	48 x 48 x 14 (1,219 x 1,219 x 356)	139 (525)	5.0 (2.0)



Folded Berm dimensions 48" x 8" x 5"

# What Other Stormwater Manufacturers Won't Tell You

Under NPDES Phase II, operators of all categories of industrial activities (except construction) may request a conditional “No-Exposure” exclusion by certifying that all industrial materials and activities are protected by a storm resistant shelter to prevent exposure to rain, snow and/or runoff.

On this page are some of UltraTech spill containment products that can help you meet the NPDES “No-Exposure” exclusion.

If your facility meets the “No-Exposure” requirements, it does not need to develop or file a SWPPP.



*Ultra-IBC Hard Top — Part# 1162, Page 28*



*Ultra-Hard Top P2 Plus — Part# 9612, Page 26*



*Ultra-Containment Sumps — Part# 2823, Page 32*



*Ultra-Hard Top P8 — Part# 9650, Pages 27*



*Ultra-Hard Top P4 — Part# 1080, Page 25*



# Ultra-Hard Top P1 Plus®

SPCC

BMP

SWPPP

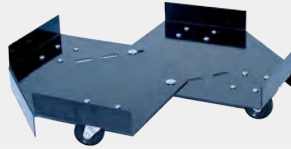
LEED

MADE IN USA

ONLINE

The only 1-drum, lockable outdoor containment unit available

- + Convenient “roll-top” cover slides up and out of the way – allows quick access to drum pumps and funnels.
- + 100% polyethylene construction will not rust or corrode.
- + Safe Handling – can be moved by forklift under the “shoulder” area or wheeled with the optional dolly.
- + Meets SPCC and EPA Container Storage Regulation 40 CFR 264.175.
- + Helps meet Stormwater Management Regulations – NPDES, 40 CFR 122.26 (1999).



Optional Steel Dolly

Part#	Description	Dimensions in. (mm)	Load Capacity lbs. (kg)	Containment Capacity gal. (L)	Weight lbs. (kg)
9640	P1 Plus (1-Drum) Without Drain	36 x 36 x 66 (915 x 915 x 1,677)	800 (363)	70 (265)	75.0 (34.0)
9641	P1 Plus (1-Drum) With Drain	36 x 36 x 66 (915 x 915 x 1,677)	800 (363)	70 (265)	75.0 (34.0)
0417	Steel Dolly	26½ x 26½ x 5 (674 x 674 x 127)	700 (318)	-	35.0 (16.0)



Tall head space (25 3/4") allows use with drum pumps and conical funnels.



# Ultra-Hard Tops®

SPCC

BMP

SWPPP

LEED

MADE IN USA

ONLINE

Outdoor secondary containment storage systems keep the elements out while providing convenient access to drums

- + Drums can be easily accessed with unique “gull wing” design.
- + Drums and collection sump remain clean and dry — free of rain water, debris, and other contaminants.
- + UV inhibitor in polyethylene resin resists degrading effects of sunlight, adding years to outdoor service life.
- + Applications include storage of virgin chemicals, drum dispensing, hazardous waste collection, and storage of spill response materials.
- + Meets SPCC, EPA Container Storage Regulation 40 CFR 264.175.



1080



1082

U.S. Patent No. 5,615,608

Part#	Description	Dimensions in. (mm)	Uniformly Dist. Load lbs. (kg)	Containment Capacity gal. (L)	Weight lbs. (kg)
1082	P2 (2-Drum) Without Drain	57 x 30½ x 63½ (1,448 x 775 x 1,613)	3,000 (1,361)	66 (250)	173.0 (78.5)
1083	P2 (2-Drum) With Drain	57 x 30½ x 63½ (1,448 x 775 x 1,613)	3,000 (1,361)	66 (250)	173.0 (78.5)
1080	P4 (4-Drum) Without Drain	57 x 54 x 64½ (1,448 x 1,372 x 1,638)	6,000 (2,722)	66 (250)	226.0 (102.5)
1081	P4 (4-Drum) With Drain	57 x 54 x 64½ (1,448 x 1,372 x 1,638)	6,000 (2,722)	66 (250)	226.0 (102.5)
0678	Ramp - Non-slip, Poly & Steel (For P4 Only)	68½ x 28½ x 12 (1,740 x 724 x 305)	700 (318)	-	74.0 (34.0)

# Ultra-Hard Top P2 Plus®



Store hazardous drums safely outdoors with pumps and funnels in place

- + Tall 23 3/4" head space easily accommodates rotary drum pumps and large conical funnels.
- + Low profile (8 3/4") containment pallet positions drum-top funnels at a safe, convenient level to pour hazardous wastes.
- + 100% polyethylene construction will not rust or corrode.
- + Meets SPCC, EPA Container Storage Regulation 40 CFR 264.175.
- + Helps meet Stormwater Management Regulations — NPDES, 40 CFR 122.26 (1999).



Ultra-Hard Top P2 Plus is lockable with a standard padlock, and can be safely lifted by forklift with drums in place.



"Swing out" lower doors provide full access to drums for loading and unloading — optional ramp features a non-slip surface.

Loading Ramp (Part# 0676) stores neatly inside the containment unit when not in use.

U.S. Patent No. 5,615,608

Part#	Description	Dimensions in. (mm)	Uniformly Dist. Load lbs. (kg)	Containment Capacity gal. (L)	Weight lbs. (kg)
9612	P2 Plus (2-Drum) Without Drain	67¼ x 41¼ x 74 (1,708 x 1,047 x 1,890)	4,500 (2,041)	66 (250)	260.0 (118.0)
9613	P2 Plus (2-Drum) With Drain	67¼ x 41¼ x 74 (1,708 x 1,047 x 1,890)	4,500 (2,041)	66 (250)	260.0 (118.0)
0676	Ramp - Non-slip, Polyethylene	55½ x 28½ x 8¾ (1,410 x 724 x 222)	700 (318)	-	43.0 (19.5)

# Ultra-Hard Top P4 Plus®



Safely store 4 drums outdoors

- + Unique "dual closure" offers significant ergonomic and convenience benefits — drums are easily accessed from either side.
- + Roll-top covers can be easily lifted from waist height to access drum tops — no need to reach near ground level.
- + Low profile (8 3/4") containment pallet positions drum-tops at a safe, convenient level to pour wastes into funnels or to use drum pumps.
- + Forkliftable, lockable, all-polyethylene construction.
- + Helps meet Stormwater Management Regulations — NPDES, 40 CFR 122.26 (1999).
- + Meets SPCC and EPA Container Storage Regulation 40 CFR 264.175.



U.S. Patent No. 5,615,608

Part#	Description	Dimensions in. (mm)	Uniformly Dist. Load lbs. (kg)	Containment Capacity gal. (L)	Weight lbs. (kg)
9636	P4 Plus (4-Drum) Without Drain	64½ x 62 x 79 (1,638 x 1,575 x 2,007)	9,000 (4,082)	75 (284)	440.0 (200.0)
9637	P4 Plus (4-Drum) With Drain	64½ x 62 x 79 (1,638 x 1,575 x 2,007)	9,000 (4,082)	75 (284)	440.0 (200.0)
0676	Ramp - Non-slip, Polyethylene	55½ x 28½ x 8¾ (1,410 x 724 x 222)	700 (318)	-	43.0 (19.5)



# Ultra-Hard Top Plus Models®



## Safely store multiple drums outdoors

- + Available in 8, 12, 16, and 20-drum models. Extender Kits are available to expand capacity beyond 20-drums.
- + All polyethylene construction — offers excellent chemical resistance, will not rust or corrode.
- + Separate, lockable compartments feature a unique “2-way” entry system — allows quick access to all four (4) drums.
- + Roll-top covers can be easily lifted from waist height to access drum tops. Swing-out doors provide safety and convenience for loading or unloading drums.
- + Low-profile (8-3/4” height) containment pallet positions drum-tops at a safe, convenient level.
- + Rugged, 9,000 lb. uniformly distributed load (UDL) capacity per compartment allows safe storage of IBC tanks as well as drums.
- + Units ship partially unassembled for freight savings.
- + Multiple “4-drum compartments” offer flexible usage for a broad range of operations. Internal walls and separate sumps allow materials to be segregated.
- + Use optional Ramp (Part# 0676) for easier drum handling — stores inside Hard Top when not in use.
- + Meets EPA Container Storage Regulation 40 CFR 264.175 and helps comply with NPDES, 40 CFR 122.26 (1999). Considered a Stormwater Management “Best Management Practice” product (BMP). Also meets SPCC Regulations for secondary containment of hydrocarbons.



U.S. Patent No. 5,615,608

Part#	Description	Dimensions in. (mm)	Load Capacity UDL per Compartment lbs. (kg)	Containment Capacity per Compartment gal. (L)	Weight lbs. (kg)
9650	P8 Plus (8-Drum) Without Drain	126 x 62 x 79 (3,201 x 1,575 x 2,007)	9,000 (4,083)	75 (284)	815.0 (370.0)
9651	P8 Plus (8-Drum) With Drain	126 x 62 x 79 (3,201 x 1,575 x 2,007)	9,000 (4,083)	75 (284)	815.0 (370.0)
9652	P12 Plus (12-Drum) Without Drain	188 x 62 x 79 (4,776 x 1,575 x 2,007)	9,000 (4,083)	75 (284)	1,190.0 (540.0)
9653	P12 Plus (12-Drum) With Drain	188 x 62 x 79 (4,776 x 1,575 x 2,007)	9,000 (4,083)	75 (284)	1,190.0 (540.0)
9654	P16 Plus (16-Drum) Without Drain	250 x 62 x 79 (6,350 x 1,575 x 2,007)	9,000 (4,083)	75 (284)	1,565.0 (710.0)
9655	P16 Plus (16-Drum) With Drain	250 x 62 x 79 (6,350 x 1,575 x 2,007)	9,000 (4,083)	75 (284)	1,565.0 (710.0)
9656	P20 Plus (20-Drum) Without Drain	312 x 62 x 79 (7,925 x 1,575 x 2,007)	9,000 (4,083)	75 (284)	1,940.0 (880.0)
9657	P20 Plus (20-Drum) With Drain	312 x 62 x 79 (7,925 x 1,575 x 2,007)	9,000 (4,083)	75 (284)	1,940.0 (880.0)
9658	4-Drum Extender Kit Without Drain	60 x 66 x 79 (1,524 x 1,676 x 2,007)	9,000 (4,083)	75 (284)	375.0 (171.0)
9659	4-Drum Extender Kit With Drain	60 x 66 x 79 (1,524 x 1,676 x 2,007)	9,000 (4,083)	75 (284)	375.0 (171.0)
0676	Ramp - Non-slip, Polyethylene	55½ x 28½ x 8¾ (1,410 x 724 x 222)	700 (318)	-	43.0 (19.5)

# Ultra-IBC Hard Top®

SPCC

BMP

SWPPP

MADE IN USA



Comply with regulations while storing IBC tanks outdoors

- + Upper roll-top door and lower swing-out doors combine to allow easy and convenient access to IBC.
- + Safely stores an IBC tank with maximum dimensions of 52" x 52" x 61".
- + Low profile (28" height), 365-gallon containment sump allows safe material handling and dispensing.
- + Forkliftable, lockable, all-polyethylene design will not rust or corrode.
- + Helps meet Stormwater Management Regulations — NPDES, 40 CFR 122.26 (1999).
- + Meets SPCC and EPA Container Storage Regulation 40 CFR 264.175.



1162 IBC tank not included

U.S. Patent No. 5,615,608

Part#	Description	Dimensions in. (mm)	Uniformly Dist. Load lbs. (kg)	Containment Cap. gal. (L)	Weight lbs. (kg)
1162	IBC Hard Top Without Drain	64½ x 62 x 96 (1,639 x 1,575 x 2,439)	8,500 (3,856)	365 (1,382)	525.0 (239.0)
1161	IBC Hard Top With Drain	64½ x 62 x 96 (1,639 x 1,575 x 2,439)	8,500 (3,856)	365 (1,382)	525.0 (239.0)

Ultra-Twin IBC Hard Top also available for outdoor storage of two IBC tanks. See below.

# Ultra-Twin IBC Hard Top®

SPCC

BMP

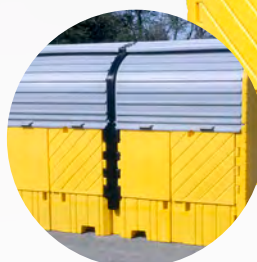
SWPPP

MADE IN USA



Outdoor storage for two IBC tanks

- + Unique, lockable, dual closure allows quick access to tanks.
- + Roll-top covers can be easily lifted for routine visual inspection.
- + Swing-out doors provide safety and convenience for loading/unloading tanks.
- + Safely stores IBC tanks, with maximum dimensions of 52" x 52" x 61".
- + Meets Stormwater, SPCC and, EPA Container Storage Regulation 40 CFR 264.175.



1148 IBC tank not included



Part#	Description	Dimensions in. (mm)	Weight Capacity lbs. (kg)	Containment Capacity gal. (L)	Weight lbs. (kg)
1148	Twin IBC Hard Top Without Drain	128 x 67 x 96 (3,251 x 1,702 x 2,438)	8,000 (3,629) UDL/side	535 (2,025)	1,067.0 (484.0)
1149	Twin IBC Hard Top With Drain	128 x 67 x 96 (3,251 x 1,702 x 2,438)	8,000 (3,629) UDL/side	535 (2,025)	1,067.0 (484.0)
1160	Ultra-Bucket Shelf	19½ x 16 x 14½ (495 x 406 x 368)	-	-	10.0 (5.0)



# Ultra-Utility Trays®



Keep messy drips and spills off warehouse and factory floors

- + Heavy-duty polyethylene construction – will not rust or corrode.
- + Ribbed bottom keeps cans, pails, and other containers elevated above any spills or leaks.
- + Nestable for easy storage when not in use.
- + Available in six sizes for a variety of applications.



Part#	Inside Dimensions in. (mm)	Containment Capacity gal. (L)	Weight lbs. (kg)
1031	12 x 48 x 4 3/4 (305 x 1,219 x 121)	12 (45)	7.0 (3.5)
1032	24 x 48 x 4 3/4 (610 x 1,219 x 121)	24 (91)	11.0 (5.0)
1033	30 x 48 x 4 3/4 (762 x 1,219 x 121)	30 (113)	12.0 (5.5)
1034	24 x 36 x 4 3/4 (610 x 914 x 121)	18 (68)	8.0 (3.5)
1035	36 x 36 x 4 3/4 (914 x 914 x 121)	27 (102)	11.0 (5.0)
1036	40 x 48 x 3 1/2 (1,016 x 1,219 x 89)	30 (113)	14.0 (6.5)

# Ultra-Filter Pads®



Capture oil, gas, and other hydrocarbons while allowing clean rainwater to flow through

- + Use Ultra-Filter Pads on construction sites, oil fields, and other areas where spill containment is needed but shelters or structures are not available.
- + Polyethylene and PVC construction is lightweight but durable - folds for quick and easy storage or transport.
- + Replaceable Ultra-X-Tex liners quickly capture oil, grease, and fuel leaks and spills. Allows clean water to pass through while filtering out any hydrocarbons.
- + Two-inch, foam sidewalls provide structure and help contain stormwater during periods of quick or large amounts of rainfall - ensures Ultra-X-Tex has ample filtering time.



Part#	Description	Dimensions in. (mm)	Weight lbs. (kg)
6540	Small	30 x 24 x 3 (762 x 610 x 76)	3.0 (1.5)
6541	Medium	42 x 30 x 3 (1,067 x 762 x 76)	5.0 (2.5)
6542	Large	60 x 48 x 3 (1,524 x 1,129 x 76)	11.0 (5.0)
6550	Small Replacement Liners (4-Pack)	30 x 24 x 1 (762 x 610 x 25)	1.0 (0.5)
6551	Medium Replacement Liners (4-Pack)	42 x 30 x 1 (1,067 x 762 x 25)	2.0 (1.0)
6552	Large Replacement Liners (4-Pack)	60 x 48 x 1 (1,524 x 1,129 x 25)	4.0 (2.0)

U.S. Patent No. 6,632,501

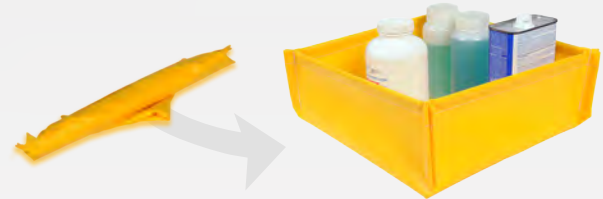
# Ultra-Utility Tray® Flexible Models MADE IN USA

Convenient, compact, and foldable trays/duck ponds capture small leaks and spills

- + Simply unroll, then unfold. No straps, supports, or sidewalls to set up.
- + One-piece units – no components or pieces to lose.
- + High-visibility, 18-oz/10 mil PVC fabric provides rugged durability and excellent chemical compatibility.
- + Folds/rolls into small size.
- + Available in six sizes to fit almost any application.



Part#	Inside Dimensions in. (mm)	Containment Capacity gal. (L)	Weight lbs. (kg)
1335	12 x 12 x 4¾ (305 x 305 x 121)	1.5 (6)	1.0 (0.5)
1330	18 x 18 x 4¾ (457 x 457 x 121)	5 (19)	1.0 (0.5)
1331	24 x 24 x 4¾ (610 x 610 x 121)	6.5 (25)	2.0 (0.9)
1332	30 x 30 x 4¾ (762 x 762 x 121)	9 (34)	2.5 (1.0)
1333	42 x 42 x 4¾ (1,067 x 1,067 x 121)	17 (64)	3.5 (1.5)
1334	48 x 48 x 4¾ (1,219 x 1,219 x 121)	20 (76)	4.0 (2.0)



## Ultra-Containment Berm® Mini Foam Wall Models MADE IN USA ONLINE

Quick and convenient spill containment for vehicles, equipment and containers.

- + Foldable mini berms (duck ponds) are compact and easy to store but deploy in a moment's notice to respond to a spill.
- + Berms fold down and can be secured using attached strap – provides simple and convenient transport and storage.
- + Foam sidewalls (6"H) provide support but can be driven over / stepped on for easier equipment / vehicle placement.
- + Heavy-duty 18 oz. PVC construction provides excellent chemical compatibility.



8850



8852



8854



Part#	Material of Construction	Dimensions ft. (m) Wall Height: 6 in. (152 mm) / Wall Thickness: 2 in. (51 mm)	Containment Capacity gal (L)	Weight lbs. (kg)
8850	18 oz. PVC	2 x 2 (0.6 x 0.6)	15 (57)	3 (1.5)
8852	18 oz. PVC	4 x 4 (1.2 x 1.2)	60 (227)	7 (3.0)
8854	18 oz. PVC	4 x 6 (1.2 x 1.8)	75 (284)	9 (4.0)



# Ultra-Containment Berm® Rapid-Rise Models



Sidewalls stay lowered and out of the way until they are needed

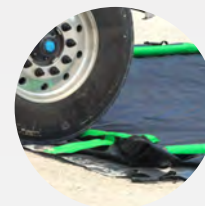
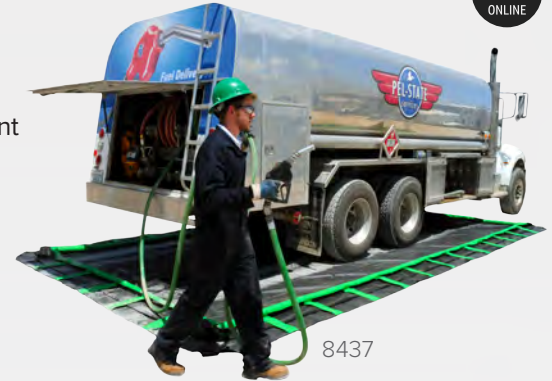
- + Sidewalls remain down during normal operations, loading and unloading — minimizing trip hazards.
- + In the case of a spill, the foam ring around the top perimeter of the Containment Berm rises with the level of spilled liquid.
- + Meets SPCC and EPA Container Storage Regulation 40 CFR 264.175.
- + Custom sizes available.

Copolymer 2000™ Part#	PVC 22 oz. Part#	Dimensions ft. (m) Wall Height: 12 in. (305 mm)	Containment Capacity gal. (L)	Copolymer 2000™ Weight lbs. (kg)	PVC 22 oz. Weight lbs. (kg)
8430	8654	4 x 6 (1.2 x 1.8)	179 (678)	31.0 (14.0)	24.0 (11.0)
8431	8630	6 x 6 (1.8 x 1.8)	269 (1,018)	37.0 (17.0)	30.0 (14.0)
8432	8631	10 x 10 (3.0 x 3.0)	748 (2,831)	69.0 (31.0)	54.0 (24.5)
8437	8656	12 x 26 (3.7 x 7.9)	2,333 (8,831)	151.0 (68.5)	118.0 (54.0)
8433	8664	15 x 50 (4.6 x 15.2)	5,610 (21,234)	302.0 (137.0)	244.0 (111.0)
8434	8666	15 x 66 (4.6 x 20.1)	7,405 (28,028)	388.0 (175.0)	313.0 (142.0)

8670 - All-In-One option (Includes pre-attached Ground Tarp and Track Belts) See website

Options: Ground Tarps, Track Belts, Pullover Covers, Self Bailer, Hose Stand

Other Standard Sizes Available. Please visit our website for more information.



Filled Berm

# Ultra-Containment Berm® Foam Wall Models



Low profile design is perfect for equipment maintenance and portable drum containment

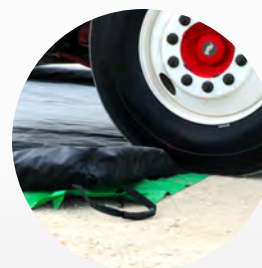
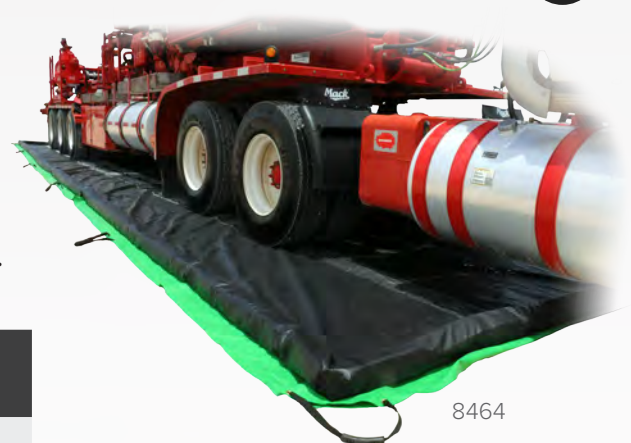
- + Capture nuisance leaks and spills from vehicles, oily equipment, tanks and drums.
- + Low, 4" sidewall contains spills – keeps plant floors and soil free from contamination. (2" wall height available)
- + No set-up required - simply unfold for quick deployment. Folded units require minimal storage space.
- + Meets SPCC and EPA Container Storage Regulations 40 CFR 264.175.
- + Custom sizes and sidewall height available.

Copolymer 2000™ Part#	PVC 22 oz. Part#	Dimensions ft. (m) Wall Height: 4 in. (102 mm)	Containment Capacity gal. (L)	Copolymer 2000™ Weight lbs. (kg)	PVC 22 oz. Weight lbs. (kg)
8570	8460	4 x 6 (1.2 x 1.8)	59 (223)	27.0 (12.0)	21.0 (9.5)
8571	8461	8 x 8 (2.4 x 2.4)	159 (602)	45.0 (20.0)	40.0 (18.0)
8573	8471	10 x 20 (3.0 x 6.1)	498 (1,885)	101.0 (46.0)	83.0 (38.0)
8578	8462	12 x 16 (3.7 x 4.9)	478 (1,809)	97.0 (44.0)	74.0 (33.5)
8581	8463	12 x 35 (3.7 x 10.7)	1,047 (3,963)	184.0 (84.0)	138.0 (62.5)
8583	8464	12 x 50 (3.7 x 15.2)	1,496 (5,663)	249.0 (113.0)	187.0 (85.0)

8670 - All-In-One option (Includes pre-attached Ground Tarp and Track Belts) See website

Options: Ground Tarps, Track Belts, Pullover Covers, Self Bailer, Hose Stand

Other Standard Sizes Available. Please visit our website for more information.



Foam side walls temporarily compress when driven over.

# Ultra-Containment Sumps®



## Rigid secondary containment for fuel tanks

### Ultra-275 Containment Sump

- + Eliminate costly spills while storing fuels, oils and other hazardous liquids in 275-gallon oval tanks.
- + Rugged, all polyethylene construction will not rust or corrode.
- + Optional 3/4" drain fitting allows use with Ultra-Self Bailer (see page 33).
- + **Meets Stormwater, SPCC, and EPA Container Storage Regulation 40 CFR 264.175.**



### Ultra-550 Containment Sump

- + Economical containment for 500- and 550-gallon fuel and oil tanks.
- + 100% polyethylene construction will not rust or corrode; provides superior chemical and weather resistance.
- + Optional 3/4" drain fitting available.
- + Use with optional Ultra-Self Bailer (Part# 9935) for outdoor containment — Self Bailer allows clean stormwater to passively drain from sump while capturing hydrocarbons. (see page 33)
- + **Meets Stormwater, SPCC, and EPA Container Storage regulation 40 CFR 264.175.**



### Ultra-1000 Containment Sump

- + Contains 1000-gallon fuel tanks.
- + 1-piece molded polyethylene design — will not rust or corrode.
- + Nestable design saves freight and minimizes storage space.
- + Optional 3/4" drain fitting available. 2" drain fitting also available.
- + Use with optional Ultra-Self Bailer (Part# 9935) for outdoor containment to passively drain from sump while capturing hydrocarbons.
- + **Meets Stormwater, SPCC, and EPA Container Storage regulation 40 CFR 264.175.**



Part#	Description	Top Outside Dims x H in. (mm)	Inside Bottom Dimensions in. (mm)	Containment Cap. gal. (L)	Weight lbs. (kg)
2800	275 Sump Without Drain	85 x 44 x 29 (2,159 x 1,118 x 737)	71 x 31 (1,803 x 788)	360 (1,363)	90.0 (41.0)
2801	275 Sump With 3/4" Drain	85 x 44 x 29 (2,159 x 1,118 x 737)	71 x 31 (1,803 x 788)	360 (1,363)	90.0 (41.0)
2823	550 Sump Without Drain	90 x 61 x 32 3/4 (2,286 x 1,549 x 832)	75 x 47 3/4 (1,905 x 1,213)	605 (2,291)	108.0 (49.0)
2820	550 Sump With 3/4" Drain	90 x 61 x 32 3/4 (2,286 x 1,549 x 832)	75 x 47 3/4 (1,905 x 1,213)	605 (2,291)	108.0 (49.0)
2830	1000 Sump Without Drain	149 x 64 x 33 (3,785 x 1,626 x 838)	138 x 52 (3,505 x 1,321)	1,100 (4,164)	244.0 (111.0)
2831	1000 Sump With 3/4" Drain	149 x 64 x 33 (3,785 x 1,626 x 838)	138 x 52 (3,505 x 1,321)	1,100 (4,164)	244.0 (111.0)
2832	1000 Sump With 2" Drain	149 x 64 x 33 (3,785 x 1,626 x 838)	138 x 52 (3,505 x 1,321)	1,100 (4,164)	244.0 (111.0)
2810	Optional Pullover Cover for 275 Sump				

Option: Ultra-Self Bailer available for all WITH 3/4" DRAIN models (see page 33)



# Ultra-Self Bailers®

SPCC

BMP

LEED

MADE IN USA

Passively filter hydrocarbons from stormwater in outdoor containment products

- + The best protection for non-monitored containment sites.
- + Helps eliminate problems associated with the collection of rainwater in outdoor containment products.
- + Simple installation — can be connected to any outdoor containment product.
- + Hydrocarbon “sheens” and modest spills are captured — clean stormwater drains through the outflow port.
- + Larger or concentrated spills activate “auto-shutoff” mechanism.
- + Manual shutoff valve can be used to secure all draining operations, change out the filter cartridge.



Use with IBC Spill Pallets, Containment Sumps, and other outdoor containment products. (Part # 9928 shown)

Produced under exclusive license of Blue Ribbon Environmental Products, Inc. (U.S. Patent Pending.)

Part#	Size	Dimensions in. (mm)	Material	Flow Rate gal. (L) per hour*	Weight lbs. (kg)	Replacement Filter Part#
9935	Standard	28 L x 3½ dia. (712 x 89)	PVC	7.5 (29)	2.0 (1.0)	9936 (Qty. 2)
9937	Large	36 L x 4½ dia. (915 x 115)	PVC	22 (84)	6.0 (3.0)	9938 (Qty. 1)
9926	XL	39 L x 6½ dia. (991 x 166)	PVC	42 (159)	11.0 (5.0)	9927 (Qty. 1)
9928	XXL	43 L x 9 dia. (1,093 x 229)	PVC	55 (209)	16.0 (7.0)	9929 (Qty. 1)

\* At 2" WC (Head Pressure)

## Ultra-Bung Access Funnel®

The Ultra-Bung Access Funnel allows access to the 3/4" drum bung. Installation of our Pop-Up Fill Gauge in the 3/4" bung allows visual monitoring of waste level in the drum and helps you plan ahead for drum removal. It also eliminates the mess caused by overfilling!

MADE IN USA



0484

Unique zig-zag channeled surface diffuses splashing. Level surfaces allow filters, paint cans, buckets and bottles to remain upright while draining passively.

0482



## Ultra-Burp-Free Funnel®

MADE IN USA

The Burp-Free Funnels feature a built-in vent. So there is no more splashing or “burping” when pouring liquids. The threaded brass insert screws into 2" drum bung or tank cap. The hinged, lockable lid prevents unauthorized access.



0656

Part#	Description	Dimensions in. (mm)	Capacity gal. (L)	Weight lbs. (kg)
0482	Bung Access Funnel	23½ dia. x 5½ (600 x 241)	6 (23)	9.0 (4.0)
0484	Bung Access Funnel With Hinged Cover	29 x 26¾ x 9½ (737 x 679 x 241)	6 (23)	13.0 (6.0)
0651	Burp-Free Funnel (Standard)	13¾ dia. x 11 (340 x 279)	—	2.0 (1.0)
0656	Burp-Free Funnel (Large)	22 dia. x 11½ (559 x 292)	—	6.0 (3.0)
0498 Optional Snap-on Cover (for Open Head Funnel) • 9985 Optional Pop Up Fill Gauge				

# Ultra-Drain Seals®

SPCC

BMP

SWPPP

LEED

MADE IN  
USA

## Stop spills from going down the drain

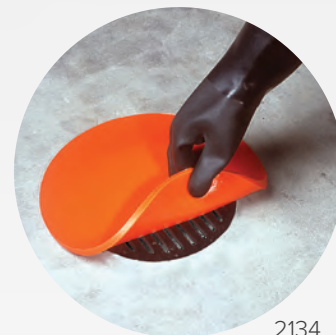
- + Reinforcing mesh is “sandwiched” between layers of polyurethane — increases durability and resistance to tearing.
- + Unique, urethane construction allows the pad to deform and seal off most drains — temporarily “seals” to any smooth surface.
- + A valuable addition to any emergency response plan, spill kit, SPCC, or stormwater management program.
- + Unlike some alternative products, BOTH sides will quickly seal drains — there is no specified “top” or “bottom.”



2130



2132



2134

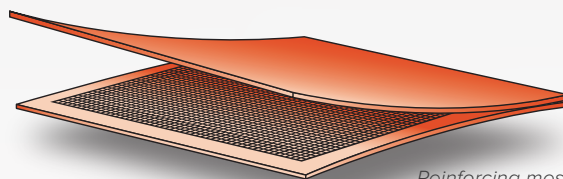
U.S. Patent No. 6,530,722

Part#	Shape	Dimensions in. (mm)	Weight lbs. (kg)
2126	Square	18 x 18 x 3/8 (458 x 458 x 10)	5.0 (2.5)
2127	Square	24 x 24 x 3/8 (610 x 610 x 10)	8.0 (3.5)
2130	Square	36 x 36 x 3/8 (915 x 915 x 10)	20.0 (9.0)
2131	Square	42 x 42 x 3/8 (1,067 x 1,067 x 10)	23.0 (10.5)
2132	Square	48 x 48 x 3/8 (1,220 x 1,220 x 10)	36.0 (17.0)
2133	Square	54 x 54 x 3/8 (1,372 x 1,372 x 10)	41.0 (18.5)
2134	Circular	12 dia. x 3/8 (305 x 10)	3.0 (1.5)
2135	Circular	20 dia. x 3/8 (508 x 10)	6.0 (3.0)
2136	Circular	30 dia. x 3/8 (762 x 10)	11.0 (5.0)
2137	Circular	42 dia. x 3/8 (1,067 x 10)	19.0 (9.0)
2124	Rectangular	18 x 58 x 3/8 (458 x 1,474 x 10)	16.0 (7.0)
2125	Rectangular	36 x 58 x 3/8 (915 x 1,474 x 10)	26.0 (12.0)

Flexible, non-absorbing material with reinforced, tear-resistant mesh.

Resists oil, water and most aggressive chemicals, cleans with soap and water.

Note: Not intended for long-term outdoor use (more than two [2] hours), as UV exposure and/or heat for extended periods can degrade the product. For applications where extended use may be required, the Ultra-Drain Seal Plus (page 35) should be considered.



Reinforcing mesh  
resists tearing.



Wall Mount



Truck Mount

Optional Ultra-Drain Seal Wall Mount and Truck Mount units allow quick response to any spill — just “grab and go”!



Part#	Description	Fits Drain Seal Part#	Weight lbs. (kg)
2140	Wall Mount Model	2124, 2126, 2127, 2134, 2135	4.0 (2.0)
2142	Wall Mount Model	2125, 2130, 2136	6.0 (3.0)
2143	Wall Mount Model	2131, 2132, 2137	8.0 (3.5)
2145	Truck Mount Model	2126, 2127, 2134, 2135	9.0 (4.0)
2146	Truck Mount Model	2130, 2136	11.0 (5.0)
2147	Truck Mount Model	2131, 2132, 2137	9.0 (4.0)



# Ultra-Drain Seal Plus®

SPCC

BMP

SWPPP

LEED

MADE IN  
USA

Ultra-Drain Seal Plus protects drains and can be left outside long-term

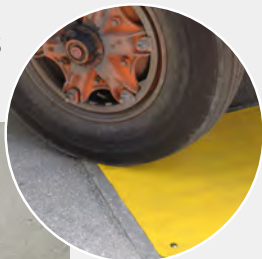
- + Urethane bottom layer keeps spills from entering drains.
- + Rugged, glass fiber reinforced polyethylene top layer (yellow) provides protection from extended UV exposure and vehicular traffic.\*
- + Excellent for use in parking areas, loading docks, and other areas where drains may be driven over.
- + Helps comply with SPCC and NPDES



Flexible, non-absorbing bottom layer is reinforced with tear resistant mesh

U.S. Patent No. 6,530,722; 7,887,257

Part#	Shape	Dimensions in. (mm)	Weight lbs. (kg)
2166	Square	18 x 18 (458 x 458)	7.0 (3.0)
2167	Square	24 x 24 (610 x 610)	15.0 (7.0)
2160	Square	36 x 36 (915 x 915)	23.0 (10.5)
2161	Square	42 x 42 (1,067 x 1,067)	27.0 (12.0)
2162	Square	48 x 48 (1,220 x 1,220)	43.0 (19.5)
2163	Square	54 x 54 (1,372 x 1,372)	53.0 (24.0)
2174	Circular	12 dia. (305)	4.0 (2.0)
2175	Circular	20 dia. (508)	7.0 (3.0)
2176	Circular	30 dia. (762)	13.0 (6.0)
2177	Circular	42 dia. (1,067)	26.0 (12.0)
2164	Rectangular	18 x 58 (458 x 1,474)	20.0 (9.0)
2165	Rectangular	36 x 58 (915 x 1,474)	38.0 (17.0)



\*Protection from "long-term exposure" is limited to the damaging effects of UV radiation. The Ultra-Drain Seal Plus is not designed for repeated, long-term exposure to vehicular traffic. The reinforced PVC top layer allows the product to be driven over on occasion, but because of the softer nature of the bottom sealing layer, it is not recommended that the product be driven over repeatedly.

# Ultra-Drain Plugs®

SPCC

BMP

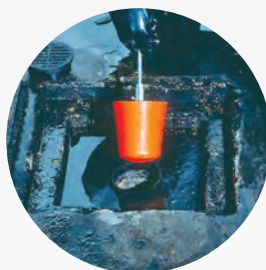
SWPPP

LEED

MADE IN  
USA

Urethane plugs install quickly to keep spills out of drains

- + Tapered design wedges securely into standard drains to stop any flow.
- + Eyebolts are removable, allowing installation of grating with Drain Plug in place.
- + Non-absorbing, easily cleaned for repeated use.



\* Kit includes one each of 2", 3" and 4" Ultra-Drain Plugs and Plastic Carrying Case.

Part#	Description	Dimensions in. (mm)	Weight lbs. (kg)
2113	2"	Top: 2½" dia. (64) Bottom: 1½" dia. (38)	2.0 (1.0)
2114	3"	Top: 3½" dia. (89) Bottom: 2½" dia. (64)	2.0 (1.0)
2115	4"	Top: 4½" dia. (114) Bottom: 3½" dia. (89)	3.0 (1.5)
2117	6"	Top: 7" dia. (178) Bottom: 5" dia. (127)	6.0 (3.0)
2118	8"	Top: 9" dia. (228) Bottom: 6½" dia. (165)	13.0 (6.0)
2119	10"	Top: 11½" dia. (292) Bottom: 8" dia. (203)	16.0 (7.5)
2121	12"	Top: 13½" dia. (343) Bottom: 10" dia. (254)	25.0 (11.0)
2116	3-Plug Kit*	15" x 11½" x 6" (381 x 292 x 153)	8.0 (3.5)

Flexible polyurethane material · Resists oil, water and most aggressive chemicals · Prevents contaminants from entering drain · Non-absorbing material · Cleans with soap and water · Safety orange color



2115



2118



2119

# Ultra-Spill Berms®



Temporary berm seals off spills from the environment, nearby drains, and doorways

- + Standard 10-foot sections can be cut to various lengths.
- + Unique, urethane material “weeps” into small cracks and crevices to seal off liquid flow.
- + Spill Berm is non-absorbing and is easily cleaned for repeated use.
- + Applications include:
  - Spill response
  - Temporary secondary containment
  - Sealing off of doorways during wash down operations
- + Flexible Ultra-Spill Berm will bend and turn to form almost any shape while temporarily “bonding” to any smooth surface.
- + Helps comply with NPDES and SPCC.



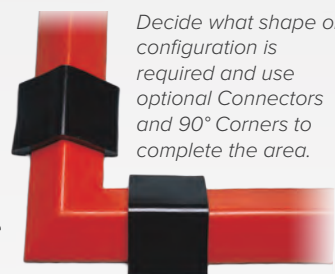
2104: Optional carrying case

U.S. Patent No. 5,236,281

Part#	Color	Dimensions	Weight lbs. (kg)
2100	Orange	10' x 4" x 2¼" (3,048 mm x 102 mm x 58 mm)	31.0 (14.0)
2050	Black	10' x 4" x 2¼" (3,048 mm x 102 mm x 58 mm)	31.0 (14.0)
2101 Connectors used to connect 10' sections · 2102 90° Corners used with Connectors · 2104 Carrying case			

2101: Black Connector

2102: 90° Orange Corner



Decide what shape or configuration is required and use optional Connectors and 90° Corners to complete the area.

# Ultra-Spill Berm Plus Model®



Taller spill berm helps contain or divert larger volume spills

- + Flexible polyurethane construction is non-absorbent and chemical resistant — easily cleans with soap and water for repeated uses.
- + Built-in connectors allow multiple 5-foot units to be quickly and easily connected.
- + Helps comply with NPDES and SPCC.



U.S. Patent No. 5,236,281

Part#	Dimensions	Weight lbs. (kg)
2054	5' x 4" x 4½" (1,524 mm x 102 mm x 114 mm)	16.0 (7.0)





# Ultra-Absorbent Tarps®

SWPPP

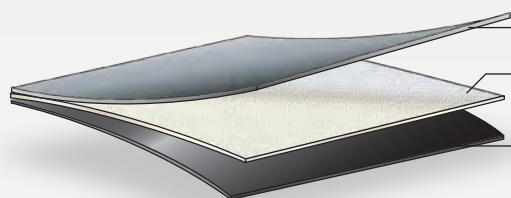
BMP

MADE IN  
USA

Catch and trap oil drips before they can reach the ground

- + Use under machinery and equipment to catch fluid leaks during maintenance or repairs.
- + Rolls or folds into small package — store in vehicles for onsite repairs.
- + Keeps floors free of oily mess — reduces slip hazards.
- + Three-layer system provides maximum protection.
- + Helps comply with NPDES, 40 CFR 122.26 (1999).

Part#	Dimensions ft. (mm)	Containment Capacity gal. (L)	Weight lbs. (kg)
8305	5 x 5 (1,524 x 1,524)	3 (11)	3.0 (1.5)
8306	10 x 10 (3,048 x 3,048)	12 (45)	12.0 (5.5)



**Top layer:** UV resistant geotextile fabric — allows oils to pass through.

**Middle layer:** Absorbent core — oil-only polypropylene traps oils but allows stormwater to evaporate.

**Bottom layer:** Impermeable backing keeps drips from leaching through to the ground or shop floor.

## Ultra-Scissor Lift Diaper®

Capture Oil Leaks, Drips, And Small Spills From Scissor Lifts  
— Keep Carpeted, Newly Painted, And Other Flooring Clean!

- + Keeps hydraulic oil and other lubricants from dripping onto floors — eliminates slip hazards and messy clean-ups.
- + Absorbent material is poly-backed to keep absorbed liquids from leaking through.
- + Diaper is quickly and easily installed with eight heavy-duty, Fastening Magnets (included) — stays in place even when equipment is moved to different locations.



*Final stages of installation — centering Scissor Lift Diaper and securing with included Fastening Magnets.*



Part#	Dimensions in. (mm)	Includes	Weight lbs. (kg)
2030	20 x 9 x 9 (508 x 232 x 232)	(1) 16" x 10' Diaper & (8) Fastening Magnets	3.0 (1.5)

# Ultra-Post Protectors<sup>®</sup>



Post covers put an end to dents, scratches, and constant upkeep

- + One-piece, lightweight design makes installation quick and easy. Simply slide over existing posts — no tools or hardware required.
- + Bright, safety yellow color adds cosmetic appeal. Custom colors available.
- + All polyethylene construction.
- + Available in four sizes to accommodate most bumper posts and bollards. Other sizes available upon request.
- + UV inhibitor in resin resists degrading effects of sunlight, for years of service.

*U.S. Patent Nos. D465,585 and 6,209,276*

Part#	For Posts in. (mm) Diameter	For Posts Up To in. (mm) height	Weight lbs. (kg)
1525	4 (102)	52 (1,321)	11.0 (5.0)
1526	6 (152)	52 (1,321)	12.0 (5.5)
1527	7 (178)	52 (1,321)	14.0 (6.5)
1528	8 (203)	52 (1,321)	16.0 (7.5)



*Learn how to measure your post and Ultra-Post Protector online at [facilityprotection.com](http://facilityprotection.com)*

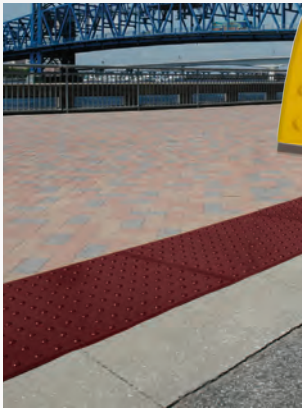
# Ultra-ADA Pads<sup>®</sup> Urethane

ADA

MADE IN USA

Detectable warning system aids the visually impaired

- + Available in four (4) sizes:  
2' x 2', 2' x 3', 2' x 4', and 2' x 5'.
- + Flexible construction conforms to fit dips, slopes, and inclines in sidewalks and walkways.
- + Ultra-ADA Pads are designed for the visually impaired to feel the raised, truncated domes with their feet. This, in combination with the tapping cane, can alert them to a different surface than the surrounding concrete sidewalk and an upcoming intersection.
- + Installs quickly and easily using adhesive and anchors (included).
- + Excellent slip resistance.
- + Custom colors available.
- + Better impact resistance than other pads.
- + UNBREAKABLE.
- + **Complies with the Americans with Disabilities Act (ADA), 49 CFR 37.9.**



Size ft. (mm)	Yellow	Brick Red	Safety Red	Black
2 x 2 (610 x 610)	Part# 0750	Part# 0760	Part# 0765	Part# 0756
2 x 3 (610 x 914)	Part# 0753	Part# 0763	Part# 0766	Part# 0759
2 x 4 (610 x 1,219)	Part# 0751	Part# 0761	Part# 0767	Part# 0757
2 x 5 (610 x 1,524)	Part# 0752	Part# 0762	Part# 0768	Part# 0758



## Treat hydrogen sulfide and other hazardous chemicals cost effectively

Ultra-S3 is an effective oxidizing system that has been used successfully in the United States and abroad for more than a decade. It has been used in landfills, waste water treatment facilities, waste water retention ponds, food processing plants, chemical plants, paper mills, and sewage lines. It is cost effective and will treat many recalcitrant chemicals such as hydrogen sulfide ( $H_2S$ ), benzene, methyl tert-butyl ether (MTBE), toluene, trichloroethylene, and many others.

### Why Ultra-S3?

- + Efficient - rapid reaction that results in oxidation of contaminants to primarily  $CO_2$  and  $H_2O$ .
- + Easy - requires minimal capital infrastructure investment.
- + Cost effective - compares very favorably to other competitive treatment solutions on the market.
- + Safe - classified as non-hazardous under the Toxic Substance Control Act of 1976 (TSCA).
- + ROI - prolongs infrastructure life.
- + Targeted - Ultra-S3 targets problem compounds without destroying environmentally beneficial microbes.

### How does it work?

- + An oxidant, generally hydrogen peroxide ( $H_2O_2$ ), and the Ultra-S3 are injected separately into waste stream or over target area.
- + When combined with an oxidant, Ultra-S3 produces hydroxyl radicals that are capable of treating a variety of recalcitrant organic compounds.
- + Hydroxyl radicals are highly efficient oxidizers. These hydroxyl radicals break down difficult chemical bonds to remediate organic compounds to non-detectable levels.



### A Proven Process – Case Study

Ultra-S3 and its chemical components have been submitted to and listed with the Toxic Substance Control Act of 1976 (TSCA) and is classified as non-hazardous without any risk flags.

One Northern California wastewater treatment plant used Ultra-S3 to eliminate a serious hydrogen sulfide ( $H_2S$ ) problem. Although  $H_2S$  is pungent in low concentrations, it paralyzes the olfactory nerve at levels above 100 ppm to render workers oblivious to the danger.

The wastewater in this plant had hydrogen sulfide levels of 7–10 ppm, which produced concentrations in the sewer air averaging 102 ppm and peaking at 250 ppm. The objective of the S3 treatment was to reduce the  $H_2S$  concentration in the air to an acceptable level (less than 10 ppm).

The end result? Ultra-S3 reduced the hydrogen sulfide concentration in the air to less than 1 ppm with only 3 minutes of contact time.







PAGE 3

Visit our  
website  
for more  
information on  
our complete line of  
**Compliance Products**

Spill Containment · Stormwater Management  
Construction Compliance · Facility Protection  
Oil Spill · Microbes · Advanced Technologies



29



13



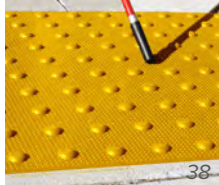
27



7



22



38



8



36



19



**ULTRATECH**  
INTERNATIONAL, INC

11542 Davis Creek Court, Jacksonville, Florida 32256 USA  
(800) 353-1611 · 1-904-292-1611 · 1-904-292-1325 fax  
stormwaterproducts.com · info@stormwaterproducts.com