

DEF

PIUSI

USA INC ®

Fluid Handling Innovations

DEF SOLUTIONS CATALOG

COMPANY PROFILE **SINCE 1953**

The **Piusi USA team**, located in **Fort Lauderdale, FL**, serves the United States, Canada, and Latin American markets. This **extension of the Piusi SPA family** in the United States devotes time and effort in **fortifying the bond between American consumers and Italian ingenuity**.

Piusi was **established in 1953** in Suzzara, in the province of Mantua (Italy). They started as a mechanical engineering workshop serving the agricultural industry. The company soon made a name for itself as a **manufacturer of strong and easy-to-use products suitable for a range of “many uses” (più-usi)**.

Research is constantly focused on **finding innovative solutions**, the upshot of the genius in Italian excellence. This has led Piusi to set up **modern offices and a manufacturing facility** which includes an automated warehouse on a covered surface area of 270,000 ft², part of a larger area covering 473,000 ft².

Piusi boasts an **efficient and dynamic corporate structure** with **200 employees**, an **in-house research & development laboratory**, and an **extensive sales and spare-parts network**, further strengthened in 2009 with the opening of a company for the North and Central American market based in Florida - USA.

Today, Piusi SPA is a **major player in over 120 different countries**, with a **broad range of intelligent, professional and easy-to-use solutions for transferring and measuring fuels, lubricants, and liquids**.



MADE IN ITALY

Since 1953

MINI-BULK DISPENSERS

	Details/Flow Rate	Page
SB MINI-BULK DISPENSER	7-9 GPM	p. 4
BLUE BOX	Lockable metal container	p. 4

DEF TRANSFER PUMP KITS

THREE25	7-9 GPM	p. 5
SB TOTE KITS (basic, basic+, pro)	7-9 GPM	p. 6
SB DRUM KITS (basic, basic+, pro)	7-9 GPM	p. 7

HAND PUMPS

ROTARY - PISTON - TOTE KIT	4 GPM	p. 8
----------------------------	--------------	------

AIR-OPERATED PUMPS

MP140 - MP190	26 / 58 GPM	p. 9
---------------	--------------------	------

PORTABLE DISPENSERS

PIUSI PORTABLE TANK 50G / 100G	7-9 GPM	p. 10
--------------------------------	----------------	-------

DEF TRANSFER PUMP

SUZZARABLU	7-9 GPM	p. 11
------------	----------------	-------

HOSE REEL

AUTOMATIC HOSE REEL	25 / 50 ft. EPDM hose	p. 11
---------------------	------------------------------	-------

MANAGEMENT SYSTEMS

MC BOX 1.0 / SELF SERVICE 1.0	Up to 120 users	p. 12
SELF SERVICE MC	7-9 GPM , up to 80 users	p. 12

FLOW & PULSE METERS

K24 DEF METER	1.6-26.4 GPM	p. 13
TURBINOX	2.6-10.6 GPM	p. 13
REMOTE DISPLAY	Universal pulse meter display	p. 13

DEF NOZZLES

SB 325 NOZZLES	9 GPM	p. 14
AUTOMATIC NOZZLE	11 GPM	p. 15
MANUAL NOZZLE	20 GPM	p. 15
GRAVITY KIT	Gravity fed nozzle	p. 15

MONITORING SYSTEM

OCIO LEVEL INDICATOR	Hardware and software	p. 16
----------------------	-----------------------	-------

GARAGE EQUIPMENT

DELPHIN	DEF dispenser for cars	p. 17
---------	------------------------	-------

ACCESSORIES & MORE

REPLACEMENT PARTS - FITTINGS - CONNECTIONS	Etc.	p. 18-19
--	------	----------



MINI-BULK

DEF DISPENSER



SB MINI-BULK DISPENSER



- Your answer to on and off-site mini-bulk dispensing
- Easily connects to your mini-bulk tank
- Lockable system for added security
- Heavy duty AC DEF pump
- K24 DEF meter
- Automatic stainless steel nozzle
- Various components include: **Blue Box**, **SB Pro Kit**, and **Pedestal**
- Field assembly required

BLUE BOX



Lockable metal container for the SuzzaraBlue pump with nozzle holder and hose hanging bracket. Able to be mounted directly to polytanks or placed on optional pedestal.

SuzzaraBlue Pro sold separately.

Key included.

Part #	Description	Flow Rate GPM	Power				Nozzle type	Meter	Filter	Weight lb.	Packaging in.
			volts/hz	RPM	watt	amp					
DEFmini	SB Mini-Bulk Dispenser	7-9	120/60	1400	400	2	Automatic	K24	-	85	Multiple
R1611800A	Blue Box	-	-	-	-	-	-	-	-	33	24 x 23 x 13

THREE25

Discover a **new dimension of fluid handling** with the Piusi Three25. Created to **ensure optimum durability and efficiency**, the Piusi Three25 administers a 32.5% urea solution that is protected by our DEF 3D filter which **prevents the contamination of your DEF** and in turn allows for an **increased life of the catalyst**.

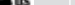
9 GPM

PREMIUM DEF TRANSFER PUMP



ITALIAN

DESIGN

Part #	Description	Flow Rate	Power		Nozzle	Delivery Hose	cRUus Certification	Weight	Packaging	
		GPM	volts/hz	RPM		watt		ft.	lb.	in.
FO0101A00	Three25 120V	9	120/60	1700	370	Automatic	20		33	20 x 16 x 13
FO0101A10	Three25 12V	9	12V	2800	260	Automatic	20	-	28	20 x 16 x 13

SUZZARABLUETOTE

KITS INCLUDE

- Heavy-duty DEF pump
- Stainless steel base
- Nozzle holder
- 20 ft. delivery hose
- 4 ft. suction hose
- Hose tail and clamps

SUZZARABLU PRO

K24 Meter
Automatic SS nozzle



SUZZARABLU BASIC+

Automatic SS nozzle



SUZZARABLU BASIC

Manual nozzle



1

PIUSI DEF COUPLER (PDC)

The new **PDC connector** allows for **quick and safe** connection to **totes & drums** equipped with a **stainless steel container valve**.



IBC Cover w/ 2" Buttress
Part # F20226000

PDC Coupler
Part # F1891000A

2

MICRO MATIC

RSV CLOSED SYSTEM

RSV Stainless Steel Dispense Coupler
by Micro Matic
Part # F1536000

RSV Container Valve
Part # F17137000
RSV Down Tube
for 330 gal
Part # F18229000 (49")



Composite Dispense Coupler
by Micro Matic
Part # F20436000



6" Single Bung IBC Cover
by Micro Matic
Part # F20226000



6" Dual Bung IBC Cover
by Micro Matic
Part # F20437000



3

BOTTOM CONNECTION KIT

Part # F15515020



Part #	Description	Flow Rate	Power		Meter	Nozzle	Delivery Hose	cRUus Certification	Weight	Packaging Box
		GPM	volts/hz	RPM						
F00201A1	SUZZARABLU 120V PRO	9	120/60	1400	400	Yes	Automatic	20	35	19 x 15 x 11
F00201A2	SUZZARABLU 120V BASIC	9	120/60	1400	400	No	Manual	20	28	19 x 15 x 11
F00201A5	SUZZARABLU 120V BASIC +	9	120/60	1400	400	No	Automatic	20	32	19 x 15 x 11
F00201A8	SUZZARABLU 12V PRO	9	12	2800	260	Yes	Automatic	20	28	19 x 15 x 11
F00201A9	SUZZARABLU 12V BASIC	9	12	2800	260	No	Manual	20	22	19 x 15 x 11

SUZZARABLUE DRUM

SUZZARABLUE DRUM

The SuzzaraBlue Drum dispensing kits **allow you to quickly switch out empty DEF drums on the fly**. The system comes equipped with an **easily transferable base**, manual or automatic nozzle, nozzle holder, **heavy-duty pump**, **20 ft. of delivery hose**, and **1.5 ft. of suction hose**. The heavy-duty pump is capable of delivering 7-9 GPM and is available in 12V or 120V (cRUus) option.

BASIC DRUM KIT

- **Stainless steel base** with nozzle holder
- **Heavy-duty pump**
- **Manual** nozzle
- **20 ft. delivery hose**
- **1.5 ft. suction hose**
- **6.5 minute** automatic shutoff

BASIC+ DRUM KIT

- **Stainless steel base** with nozzle holder
- **Heavy-duty pump**
- **Automatic** stainless steel nozzle
- **20 ft. delivery hose**
- **1.5 ft. suction hose**
- **6.5 minute** automatic shutoff

PRO DRUM KIT

- **Stainless steel base** with nozzle holder
- **Heavy-duty pump**
- **SB 325 metered automatic** nozzle
- **20 ft. delivery hose**
- **1.5 ft. suction hose**
- **6.5 minute** automatic shutoff (120V Only)

SUZZARABLUE CART

The cart is **designed for easy mobility of the drum and tote pump kit**. With the cart you can install a **SuzzaraBlue Basic tote kit** or you can choose the **SuzzaraBlue Pro tote kit** (with the K24 meter and automatic nozzle).



Part #	Description	Flow Rate	Power			Nozzle	Delivery Hose	cRUus Certification	Weight	Packaging
		GPM	volts/hz	RPM	watt					
Foo201A3	SUZZARABLUE BASIC drum kit	7-9	120/60	1700	370	Manual	20		27	19 x 15 x 11
Foo201A4	SUZZARABLUE BASIC+ drum kit	7-9	120/60	1700	370	Automatic	20		31	19 x 15 x 11
Foo201ALo	SUZZARABLUE PRO drum kit 120V	7-9	120/60	1700	370	Automatic	20		21	19 x 15 x 11
Foo201AMo	SUZZARABLUE PRO drum kit 12V	7-9	12	2800	260	Automatic	20	-	24	19 x 15 x 11
R12068010	Cart (only)							-	59	43 x 27 x 12.5

PIUSI HAND PUMP

The new **Piusi DEF Rotary Hand Pump** is the first hand pump to be **specifically designed for use with DEF!**

KIT INCLUDES

- 9 ft. of dispensing hose
- Stainless steel spout
- Flexible suction pipe
- Drum connector
- Filter available

- Maintenance free for 250,000 gallons
- Self-Priming
- Integrated check valve for immediate dispensing
- Eliminate the siphon effect with check valve and spring-loaded vanes
- Prevents DEF crystallization

Upgrade to a closed loop system with the PDC and PDC Adapter

PDC
Part # **F1891000A**

PDC adapter
Part # **F20195000**

*both parts required to complete closed loop system



Part #	Description	Flow Rate GPM	Spout Ø	Suction Pipe	Drum Connector	Delivery Hose ft.	Weight lb.	Packaging in.
F00332A30	Rotary Hand Pump Kit	4	3/4"	included	included	9.8	7	14 x 10 x 7
F00332A80	Rotary Hand Pump Kit w/ 3D Filter	4	3/4"	included	included	9.8	8	14 x 10 x 7
F00611D00	3D Filter Kit w/ Housing	-	-	-	-	-	2	6 x 4 x 7
F00611D10	Piusi 3D Filter Cartridge	-	-	-	-	-	1	6 x 4 x 7
F0033213A	Piston Hand Pump Kit	4	3/4"	included	included	9.8	7	20 x 10 x 7
F00332B00	Rotary Hand Pump Tote Kit	4	3/4"	Included	included	9.8	8	14 x 10 x 7

PIUSIMP

AIR OPERATED DIAPHRAGM PUMP

58 GPM | 26 GPM



MP190



MP140



- A = Ball valves
- B = Pumping chamber
- C1 = Product-side diaphragm
- C2 = Air-side diaphragm
- D = Suction manifold
- E = Delivery manifold
- F = Pneumatic exchangers (IAMA)

FEATURES

- **Self-priming**
- **Sturdy technopolymer body**
- **ATEX certification** for severe duty conditions or operation in potentially explosive atmospheres
- **Can be run dry** without causing damage
- **Fine tuning of flow rate** without pressure loss

Part #	Description	Pump Body	In/Out	Air Connection	Flow Rate GPM	Weight lb.	Packaging in.
Foo208P50	MP140	polypropylene	1" NPT	3/8"	26 @ 100 psi	13	16 x 15 x 12
Foo208P60	MP190	polypropylene	1-1/4" NPT	1/2"	58 @ 100 psi	29	19 x 19 x 12

PIUSI PORTABLE TANK



- ❶ SuzzaraBlue 12V DC Pump
- ❷ Ventilation Cap
- ❸ 4" Cap
- ❹ 20 ft. Outflow Hose
- ❺ SB 325 Automatic Nozzle
- ❻ Nozzle Holder
- ❼ Crane Loop Access
- ❽ 6 ft. Cable with Clamps

For universal and durable **DEF transportation and storage**, the Piusi Portable Tank (PPT) offers an effective solution to **deliver DEF to on-road and off-road vehicles**. The PPT ensures a safe and **quick DEF transfer** utilizing its SuzzaraBlue DC pump, shock resistant polyethylene construction, ventilation cap, and stainless steel accessories. The **lightweight, lockable tanks, are UV resistant** and **can be effortlessly loaded onto your delivery vehicle**. Most importantly, the SuzzaraBlue is now secured and easily accessible.

FEATURES

- **Lightweight tank with built-in crane loops and forklift/pallet-jack base** for easy movement and loading of tank when full or empty
- Shock resistant **polyethylene construction** for DEF compatibility
- **Fully enclosed, lockable system** for added security
- **UV resistant** to protect from weathering
- **6 ft. cable with clamps**
- **20 ft. delivery hose**
- On/Off Switch



***Heated option available upon request**

AVAILABLE ACCESSORIES

UPGRADE TO A METERED NOZZLE



SB 325 Metered
Part # F00617010



K24 1" DEF Flow Meter
Part # F00407340

Part #	Description	Flow Rate	Power			Cables	Connections	Connections	Weight	Packaging	
		GPM	volts/hz	RPM	watt		amp	in			out
F00102000	Piusi Portable Tank 50g	7-9	12V DC	2800	260	22	Yes	hose tail 3/4"	hose tail 3/4"	123	43 x 32 x 22
F00102010	Piusi Portable Tank 100g	7-9	12V DC	2800	260	22	Yes	hose tail 3/4"	hose tail 3/4"	145	43 x 32 x 33

SUZZARAB^{BLUE} PUMPS

**REGISTERED
DESIGN**

Piusi has developed a new type of membrane pump equipped with an **electric motor, auto shutoff timer** and **no need for a dynamic seal**. This allowed us to obtain a **reliable industrial pump** with **self-priming capabilities**.

AC PUMPS

FLOW RATE	MAX OPERATING PRESSURE	DUTY CYCLE
9 GPM	23 PSI	20 MINUTES ON & OFF

FEATURES

- Voltage: **120V / 60Hz**
- Absence of dynamic seals
- **ON/OFF** switch
- **6 ft. cable with socket**
- **6.5 minute timer**

AC



DC

DC PUMPS

FLOW RATE	MAX OPERATING PRESSURE	DUTY CYCLE
9 GPM	23 PSI	20 MINUTES ON & OFF

FEATURES

- Voltage: **12V / 24V**
- Absence of dynamic seals
- **ON/OFF** switch
- **6 ft. cable with clamps**
- Handle available upon request
- **Optional 18 ft. cable with clamps**

Part #	Description	Flow Rate GPM	Power				Cables	Connections		Weight lb.	Packaging in.
			volts/hz	RPM	watt	amp		in	out		
Foo203100	SUZZARAB ^{BLUE} AC pump 120V	7-9	120/60	1400	400	2	Yes	hose tail 3/4"	hose tail 3/4"	15	14 x 12 x 8
Foo20400A	SUZZARAB ^{BLUE} DC pump 12V	7-9	12	2800	260	22	Yes	hose tail 3/4"	hose tail 3/4"	10	14 x 11 x 8
Foo204090	SUZZARAB ^{BLUE} DC pump 24V	7-9	24	2800	310	13	Yes	hose tail 3/4"	hose tail 3/4"	9	14 x 11 x 8
Foo204020	SUZZARAB ^{BLUE} DC pump 12V with 18 ft. cable with clamps	7-9	12	2800	260	22	Yes	hose tail 3/4"	hose tail 3/4"	10	14 x 11 x 8

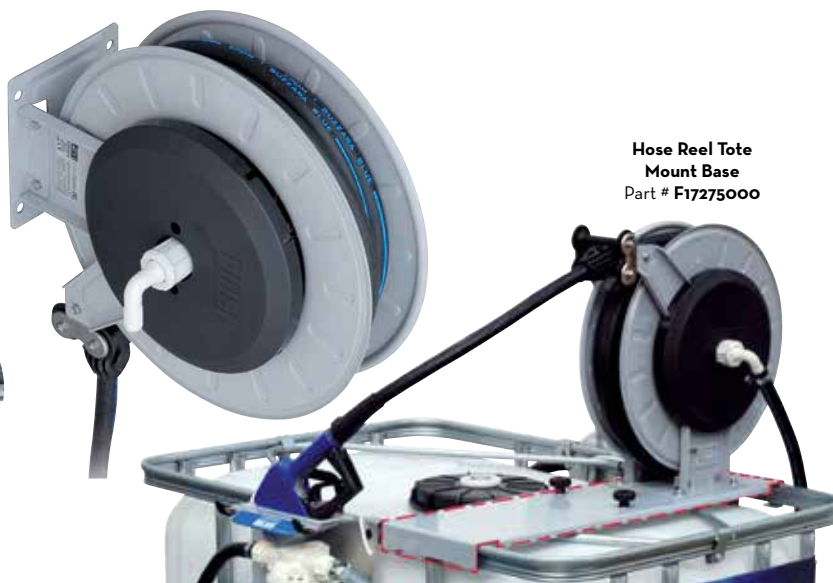
HOSE REEL

Hose reel **made specifically for DEF use** with supply hoses. **Designed to limit pressure loss** and facilitate use. The hose reel reduces pressure loss through the proper sizing of the hydraulic system, includes a protective latch mechanism that prevents accidental contact with the hands. This hose reel offers **adjustable arms for easy positioning** as required, and an **optional rotating wall support** that facilitates hose reel installation in different positions.

FEATURES

- Protective latch
- **Adjustable positioning arm**
- **Optional wall support plate**

Rotating Support Plate
25 ft. Part # **F17317000**
or
50 ft. Part # **F16279000**



**Hose Reel Tote
Mount Base**
Part # **F17275000**

Part #	Description	Hose		Max Pressure psi	Inlet with Swivel	Outlet Hose tail	Weight lb.	Packaging in.
		incl.	ft.					
Foo75007A	Hose reel DEF 25 ft. EPDM hose	Yes	25	145	3/4"	3/4"	38	22 x 21 x 11
Foo750110	Hose reel DEF 50 ft. EPDM hose	Yes	50	145	3/4"	3/4"	53	22 x 21 x 11
F17275000	Hose reel tote base mount	-	-	-	-	-	17	23 x 10 x 2

MANAGEMENT SYSTEMS

MCBOX1.0



FEATURES:

- Panel with **dual display**
- Keyboard and **i-button reader**
- Controls **up to 120 users through PIN codes** or **i-button keys**
- Will hold up to 255 transactions before data transfer is needed
- **Reports consumption** of each individual user
- **Dedicated software** for printing individual **detailed summaries**
- Possibility of **managing up to 16 MC Boxes** with one computer
- **Key reader** with USB socket for **exporting data**
- **Self Service software** required
- Not compatible with MAC computers

SELF SERVICE MC 1.0 & 2.0

- Controls **up to 80 users through PIN codes** or **i-button keys**
- **Hinged front panel** provides easy access to the internal components of the dispenser (pump, filter, meter, control panel)
- **Lockable system** for added security
- **Calculates consumption** of each individual user
- **SB 325 nozzle, 3D filter, and K24 meter**
- **Dedicated software** for printing individual **detailed summaries**
- **Key reader** with USB socket for **exporting data**
- **IP55 protection**
- **Self Service software** required (please visit www.piusiusa.com for more information on the Self Service 2.0 software)



AVAILABLE ACCESSORIES



K24 DEF Flow Meter



3D DEF Filter

Part #	Description	Flow Rate	Power			Nozzle type	Meter	Filter	Weight lb.	Packaging in.
		GPM	volts/hz	RPM	watt	amp				
F1398007B	MC Box 120V	-	120/60	-	-	13.5	-	-	12	12 x 12 x 7
F1398001A	MC Box 12V	-	12V DC	-	-	50	-	-	12	12 x 12 x 7
F00744020	Self Service MC DEF Dispenser	7-9	120/60	1400	400	2	SB 325	K24	102	58 x 20 x 16
F00743080	Self Service MC DEF Dispenser 2.0	7-9	120/60	1400	400	2	SB 325	K24	102	58 x 20 x 16

SELF SERVICE 1.0 OPERATING SOFTWARE PACKAGES

A

Key Kit

Part # F14144040

Kit includes:

- 1 red manager key
- 10 yellow user keys
- 1 key reader for data transfer to PC
- CD with PC software

B

PC Interface

Part # F1271000C

Kit Includes:

- 1 USB converter
- CD with PC software

C

Wi-Fi Kit

Part # F12710040

Kit includes:

- Wi-Fi box
- Wi-Fi transmitter
- CD with PC software

D

PW-LAN Kit

Part # F12710050

Kit includes:

- PW-LAN box
- CD with PC software

Language key | Includes: 1 black key

English: F15358000 Español: F1396800A
Português: F1400000A Français: F1390700A

User key Part # R15904000

Includes: 10 yellow keys

Manager key Part # R12496000

Includes: 1 red key

FLOW & PULSE METERS

K24

The K24 meter is **easy to install in-line on the delivery hose or at the nozzle**. The K24 meter contains a compact and **highly visible display**. The display **can be rotated in 4 different positions**.

Impulse type signals: Single channel, reed switch. Electronic card with LCD display: 5 digit partial total from 0.1 to 99999, 6 digit non-resettable total from 1 to 999999.

- **Resettable** total included
- **Programmable** unit of measurement
- **Flow rate** indication

ACCURACY
1%
 +/-

PULSE OUT
333
 PPG



K24 pulser



K24 flow meter

INCLUDED:
 Socket 1" BSP/BSP

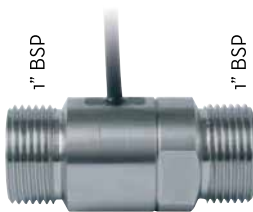
 Female Female

AVAILABLE:
 Socket 1" BSP/NPT

 Female Female
 Part #
F16458000
 (pack 20 pcs.)

TURBINOX

This meter is **easy to install**. A tight **stainless steel body** provides endurance for use in every condition. Also available is our **pulser display** which **allows you to connect an external receiver**.



In-line turbine pulse meter

ACCURACY
1%
 +/-

PULSE OUT
333
 PPG

REMOTEDISPLAY with PULSE OUT

Universal display for controlling pulse meters via 49 ft. cable. **Screen displays quantity delivered and non-resettable total**. Available as both **basic display device** and as **pulse emitter** for use with management systems.



Part #	Description	Flow Rate GPM	Max Operating Pressure psi	Display	Pulse Out (ppg)		Weight lb.	Packaging in.
					Pulser Version	Display Version		
Foo407340	K24 Flow Meter (1 socket) GAL	1.6 - 26.4	145	Yes	-	333	1	7 x 5.5 x 3.5
Foo40721B	K24 Pulser-Meter (1 socket)	1.6 - 26.4	145	No	333	-	1	7 x 5.5 x 3.5
Foo42000A	In-line Turbine Pulse Meter	2.6 - 10.6	290	No	333	-	1	6 x 5 x 3
Foo49503B	Remote Display with Pulse Out	-	-	Yes	-	1-10-100	2.6	9 x 6 x 5



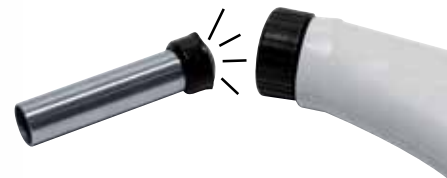
DEF NOZZLES

A complete range of **automatic nozzles designed for the DEF market**. This new automatic nozzle is **reliable, lighter, and ergonomic**, setting the standard for all DEF nozzles.

9GPM | 1% ACCURACY

Break-Away System

In the event that a vehicle accidentally drives away with the nozzle still in the tank, the **spout is designed to detach from the nozzle**. This system allows for a quick repair by merely fitting a new spout onto the nozzle.



Mis-filling Spout Kit

This kit allows you to **transform a standard SB 325 nozzle into an SB 325 mis-filling system** by simply fitting a different spout onto the nozzle. This feature prevents you from having a mis-fill into the fuel tank.



SB 325 Automatic

SB 325 Metered

Automatic nozzle with built-in meter

SB 325 Mis-filling

Automatic nozzle with built-in meter & mis-fill spout

Part #	Description	Magnetic Adapter	Flow Rate GPM	Meter	Max Operating Pressure		Inlet BSP	Spout ext. Ø	Weight lb.	Packaging in.
					psi	bar				
F00617000	SB 325 Automatic Nozzle	No	9	No	50.8	3.5	3/4"	3/4"	2	18 x 8 x 3
F00617010	SB 325 Metered Automatic Nozzle	No	9	Yes	50.8	3.5	3/4"	3/4"	3	18 x 8 x 3
F19174000	Mis-filling Spout Kit with Bypass Adapter	Yes							1	6 x 5 x 2
F1840000	Magnetic Spout Bypass Adapter								1	6 x 5 x 2
R19173000	SB 325 Replacement Spout								1	6 x 5 x 2

AUTOMATICNOZZLE

Automatic DEF nozzle featuring a device that stops the flow when the tank is full.



Spout outer diameter 3/4"

FLOW RATE	MAX OPERATING PRESSURE	WEIGHT
11 GPM	50 PSI	5.7 LB

Part #	Description
F0061903B	Auto-nozzle Hose Tail 3/4" with swivel
F0061902B	Auto-nozzle without swivel inlet thread 3/4" BSP

MANUALNOZZLE

Manual DEF nozzle distinguished by high efficiency, due to the low flow resistance, and inexpensive operation.



Spout outer diameter 3/4"

FLOW RATE	MAX OPERATING PRESSURE	WEIGHT
20 GPM	50 PSI	1 LB

Part #	Description
F14761000	Manual DEF nozzle

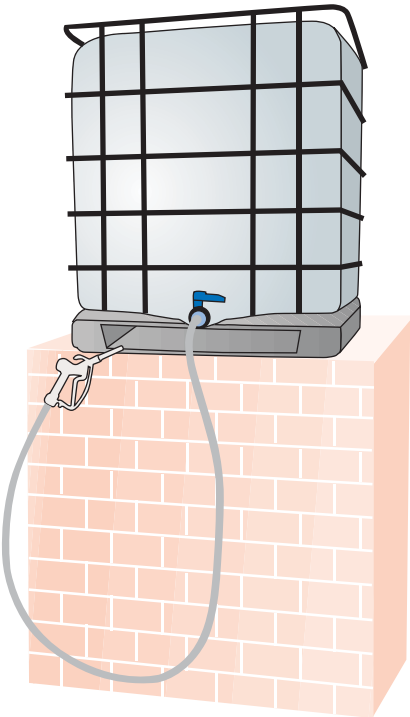
GRAVITYKIT

As an alternative to the electric pump and hand pump options, the **Gravity Kit offers another method of dispensing DEF**. Equipped with a manual DEF nozzle and 2" NPT connector; this is an economic means of utilizing your IBC tote to **dispense from an elevated position**.



Technical Features

- Manual nozzle
- 9 ft. of hose
- IBC bottom adapter



Part #	Description
F15517010	Gravity Kit

OCIO

LEVEL INDICATOR

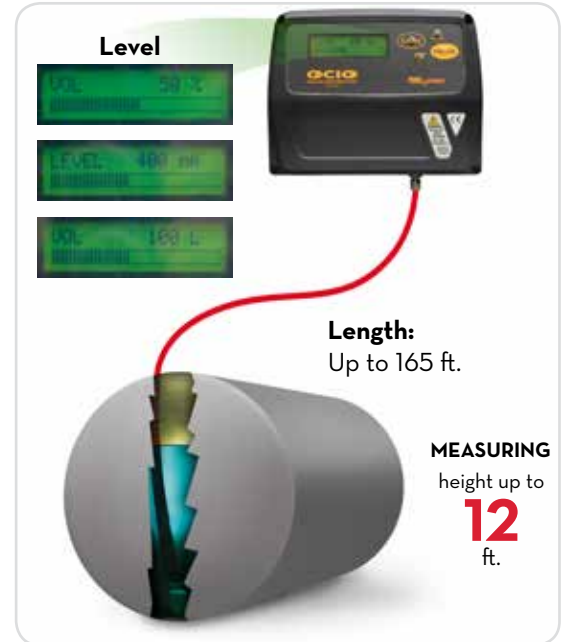
Continuous tank level monitoring, the OCIO **detects the static pressure** generated by the **fluid height** by means of a tube inserted into the tank and **displays the fluid level or volume**. **Integrated software available** that allows the user to **set various parameters** and monitor the **usage of up to 12 tanks** at a time.

HARDWARE

- **Instant digital level indicator**
- **Customizable** unit of measurement (**L/mm, G/in**)
- Maximum measurable height: **13 ft.**
- Maximum measurable length: **165 ft.**
- **Calibrate** as required

SOFTWARE

- **Easy tank level monitoring**
- **Intuitive tank display**
- **Adjustable** low/high **alarm levels**
- Resettable **tank type** and dimensions for different tanks
- **OCIO level indicator hardware required for each individual tank**



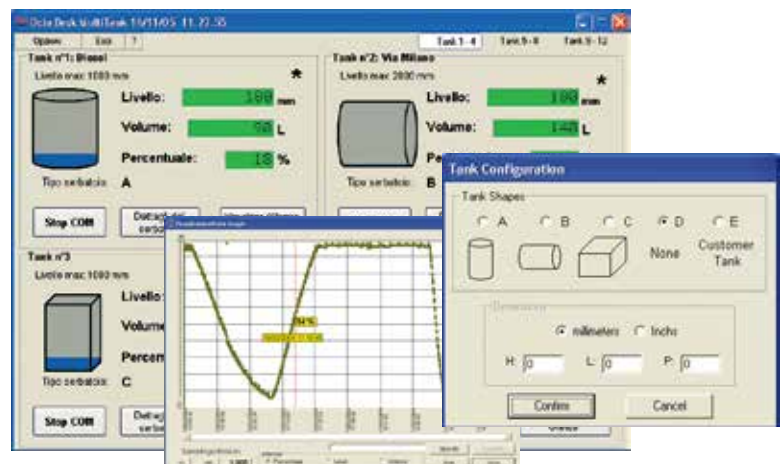
Part #	Description	AC volts/hz	RS exit	Weight lb.	Packaging in.
Foo075511D	Level Indicator OCIO LV / RS output 120V	120/60	available	4.8	12 x 16 x 4
F12710040	Wi-Fi Upgrade for 1.0 systems	-	-	-	-
Foo0755230	OCIO 2.0 LAN 120/60 (2.0 softwares only)	120/60	available	4.8	12 x 16 x 4
Foo0755240	OCIO 2.0 Wi-Fi 120/60 (2.0 softwares only)	120/60	available	4.8	12 x 16 x 4
Foo0755250	OCIO 2.0 RS485 120/60 (2.0 softwares only)	120/60	available	4.8	12 x 16 x 4

*OCIO 2.0 hardware only for use with Self Service 2.0 for the 2.0 management system

OCIO DESK

Software + PC interface

Part #	Description	Weight lb.	Packaging in. (pg. 3)
Foo0755S1A	OCIO desk SINGLE TANK (software + PC interface for 1 tank)	1	8 x 5 x 5.5
Foo0755SoC	OCIO desk MULTITANK 4 (software + PC interface for 4 tanks)	2.8	8 x 5 x 5.5
Foo0755S2A	OCIO desk MULTITANK 8 (software + PC interface for 8 tanks)	5.2	7 x 7 x 6.5
Foo0755S3A	OCIO desk MULTITANK 12 (software + PC interface for 12 tanks)	6.8	7 x 8 x 6.5



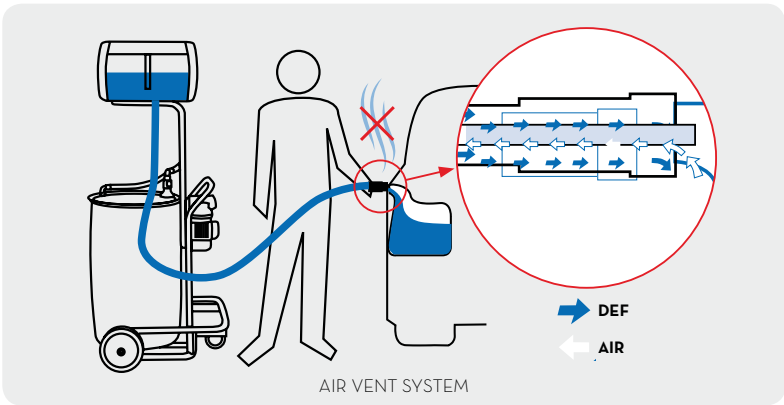
DELPHIN

DEF CAR DISPENSER

Piusi, the **market leader in solutions for DEF refilling**, is proud to present the new **SuzzaraBlue Delphin**.

The new system is **specially designed** for use in **motor vehicle workshops**. Mounted on a sturdy cart for **ease of transport**, it allows vehicle tanks to be **refilled with DEF in complete safety**.

The **120 volt membrane pump** fills the Delphin's upper tank with DEF, which is then transferred to the vehicle's tank by gravity. This **innovative system avoids leaks and drips**. It is versatile, **easy to move** and **user friendly**. Choose the reliability of Piusi solutions for all your refilling needs!



CLOSED SYSTEM

PATENT PENDING



COMPONENTS

AC Pump	Filling Valve	Level Indicator	Suction Connection PDC	Suction Hose with plug head

- 1. Sturdy cart for ease of transport
- 2. 120V electric pump
- 3. Delphin tank (5 gallon capacity)
- 4. Visual level indicator
- 5. Delivery hose and fitting connection to the vehicle's tank

TECHNICAL DATA

Part #	Description	Flow Rate		Power		On/Off Switch	Delivery Hose	Ø
		GPM	volts/hz	amp	watt		ft.	in.
F00100100	Delphin	1.6	120/60	1.95	400	Yes	20	3/4"

ADAPTERS



Part #
F16074000
NPT/NPT
(pack 20 pcs.)



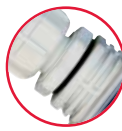
Part #
F16458000
BSP/NPT
(pack 20 pcs.)



Part #
F16073000
BSP/BSP
(pack 20 pcs.)



Stainless Steel K24
Nozzle Adapter
for automatic nozzle
M 3/4" BSP - F 1" BSP
Part # **F16475000**



Plastic K24 Nozzle
Adapter for
manual nozzle
M 1" BSP - F 1" BSP
Part # **F15776000**



PDC Adapter for
Rotary Hand Pump
Part # **F20195000**

SB325 REPLACEMENT PARTS

MAGNETIC ADAPTER

Magnetic
spout tank
adapter
Part # **F15165000**



REPLACEMENT SPOUT

SB325
Mis-filling
replacement spout
Part # **R19172000**



REPLACEMENT SPOUT

SB325
Non Mis-filling
replacement spout
Part # **R19173000**



BYPASS ADAPTER

SB325
Mis-filling spout
with bypass adapter
Part # **F19174000**



BYPASS ADAPTER

SB325
Bypass adapter
Part # **F1840000**



PLASTIC FITTINGS

Hose Tail



M 1" BSP x
Ø 3/4"
Part #
F15522000



90° Ø 3/4"
M 1" BSP
Part #
F15485000



90° Ø 3/4"
F 1" BSP
Part #
F15484000

Swivel



M/F 1" BSP
Part #
F15179000

Socket 90°



1" F BSP
Part #
F16433000

Linear Socket



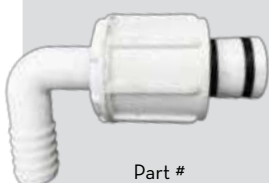
1" F BSP
Part #
F16434000

Hose Tail



1" F BSP
Part #
F16435000

External DEF Hose Reel Fitting



Part #
R18188000

Internal DEF Hose Reel Fitting



Part #
R1819400A

ACCESSORIES / REPLACEMENT HOSE / ETC

HOSE FITTINGS

Stainless Steel
Swivel Hose Tail
3/4" BSP
3/4" Hose Tail
Part # **F14132000**



THREE25 HOSE

20 ft. delivery hose
BPRO crimped
Part # **F1907200A**



20 ft. HOSE

3/4" **20 ft.** delivery
hose EPDM
Part # **F14125010**



DELIVERY HOSE

3/4" coil **262 ft.**
EPDM
Part # **F14125050**



SUCTION HOSE

3/4" coil **130 ft.**
EPDM
Part # **F14124000**



POWER SWITCH

SuzzaraBlue
Replacement Power
Switch
Part # **R16657000**



CLAMP

Stainless Steel
23-35-12
(10 pcs.)
Part # **F13800000**



PROTECTOR

Rubber Protector
Part # **F16497000**



3D DEF FILTER

Replacement filter
cartridge w/ housing
Part # **F00611D00**



3D DEF FILTER

Replacement filter
cartridge only
Part # **F00611D10**



 **PEI**TM *It's all about the equipment.*



PIUSI USA, Inc
3901 Anglers Avenue
Fort Lauderdale, FL 33312
Telephone: (954) 584-1552
www.piusiusa.com

Certified - ISO 9001 - ISO 14001

The company reserves the right to modify the information contained in this catalog without any prior notice.