

PRODUCT SUMMARY

FLOW • LEVEL • PRESSURE • TEMPERATURE • ANALYTICS • ACCESSORIES





KOBOLD Instruments

For more than 35 years, KOBOLD has been a world leader in process measurement and control solutions. We offer one of the industry's broadest lines of sensors, switches, and transmitters to measure and control flow, pressure, level, and temperature. The KOBOLD brand is synonymous with quality, craftsmanship, technological advancement, and cost effectiveness. With in-house engineering and manufacturing, we are able to customize products to match your application. Our people and our products will go the extra mile for you. Our engineers and customer service representatives are ready to help you find the ideal KOBOLD solution for your most demanding applications.

KOBOLD's Product Line Includes:

• Flow	Pages	6 - 19
• Level	Pages	20 - 24
• Pressure	Pages	25 - 29
• Temperature	Pages	30 - 32
• Analytics	Page	33
• Accessories	Pages	34 - 35



The KOBOLD Group's production plants are located all over the world

Feature Icons: Look for our new "at a glance" icons in our product listings



High Quality /
Low Cost



Sensor Supply



Configurable Outputs



Stainless Steel
Design



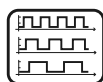
Installation Under
Process Conditions



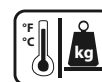
Operational with
Gloves



For Chemicals



Scalable Analog
Output



Temperature and
Pressure Measurement



Shock Resistant



Rotatable Display



Temperature and
Flow Measurement



Heating Jacket



Configurable Display



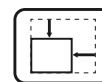
Patented



Battery Powered /
External Power Supply



Bi-directional



Space Saver



Battery Powered



Resettable and
Grand Total



NFC

Product Table

Model	Page	Model	Page	Model	Page	Model	Page	Model	Page	Model	Page
ACM	33	DRH	12	KDS	7	MWD	32	NWP	22	TED	22
ACS	33	DRM	26	KEC	15	MZB	27	NWS	22	TGK	31
ADI-1	35	DRS	10	KEL	16	NAB	20	NZJ	24	TGL	31
AFA	33	DRZ	13	KFD/KFA	34	NBA	20	OEM	20	TIR	31
AFK	33	DSD	25, 27	KFF	12	NBE	20	OME	13	TM	16
AFS	33	DSF26	26	KFG	12	NBK	24	OMG	13	TMA	32
ANU	16	DTB	31	KFR	6	NBK-04	24	OPT	22	TME	15
APM	33	DTE	32	KME	15	NBK-M	24	OVZ	13	TMU	16
APS	33	DTK	12	KMT	15	NCG	20	PAD	23, 27	TND	32
AUF	28, 34	DTM	30	KP46	28	NCM	20	PAS	28, 29	TNF	30
BA	24	DTS	30	KPA	28	NCP	20	PDA	27	TNK	30
BGF	8	DUC	18	KPF	29	NCS	20	PDC	25	TNS	30
BGK	7	DUK	18	KPG	28	NCW	21	PDD	29	TRS	30
BGN	8	DUS	16	KPH	29	NDT	22	PEL	11	TSA	31
BVB	9	DVE	18	KPH300	29	NE	21	PIT	17	TSH	30
DAA	18	DVH	17	KPK	28	NEC	20	PLS	22	TSK	10
DAB	19	DVK	14	KPL	16	NEH	21	PMP	27	TSP	31
DAF	18	DVT	16	KPW	24	NEK	21	PNK	27	TSR	31
DAG	35	DVZ	17	KRT	29	NEL	21	PPS	9	TST	31
DAH	18	DWD	10	KSK	6	NEO	24	PS	9	TTL	32
DAK	19	DWF	33	KSM	6	NES	21	PSD	29	TUR	10
DAR	19	DWN	10	KSR	6	NGM	23	PSR	9	TUV	11
DAT	19	DWS	10	KSV	6	NGR	23	PUM	27	TWA	32
DAZ	19	DWU	10	KZA	14	NGS	21	RCD	17	TWL	31, 32
DF	12	DZR	13	LCI	33	NIR	22	RCM	17	TWM	32
DFT	12	EDM	11	LFM	12	NK	22	REG	18, 34	TWR	30
DIG	19	EDM-8...	11	LNK	21	NKP	20	RFS	20	URB	6
DIH	19	FPS	9	LNK	21	NMC	23	RL	34	URK	7
DKB	19	HND-C	33	LNR	21	NMF	22	S	8	URL	7
DKF	19	HND-F	10, 33	LNZ	21	NML	23	SCH	29	URM	7
DMH	17	HND-P	28	LPS	9	NMT	23	SCI	34	USR	7
DMS	15	HND-R	33	LTS	32	NRF	23	SEN	27, 28	UTR	7
DMW	15	HND-T	31	M	20	NSC	23	SFL	11	UTS	7
DOE	13	HPC	15	MAN	25, 26, 27	NSD	22	SMN	8	UVR	7
DOG	18	INT	35	MAS	15	NSE	21	SM	8	V31	7
DON	13	KAH	14	MFR	34	NSM	20	ST	32	VKA	9
DOR	13	KAL	14	MIK	17	NSP	20	SV	8	VKG	9
DOT	11	KAL-A	14	MIM	17	NST	21	SVN	6	VKM	9
DPE	10	KAL-D	14	MM	23	NSV	22	SWK	6	VKP	8
DPL	12	KAL-K	14	MMA	32	NTB	24	SZM	24	ZDM	14
DPM	11	KAL-L	14	MPT	35	NUS	24	TBE	32	ZED	35
DPT	10	KAS	29	MPV	35	NV	20	TBI	31	ZLS-2	35
DRB	11	KDF	6	MRT	35	NVI	22	TDA	30	ZOE	35
DRG	12	KDG	6	MSR	34	NVM	34	TDD	30	ZOK	35

Brand Directory:

Tri-Clamp® is a registered trademark of Tri-Clover Inc. of the Alfa-Laval Group.
Trogamid® is a registered trademark of Evonik Resource Efficiency GmbH.
Hastelloy® is a registered trademark of Haynes International, Inc.

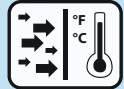
Ryton® is a registered trademark of Chevron Phillips Chemical Company.
Monel® is a registered trademark of Special Metals Corporation.

NEW KOBOLD Products

MIM Magnetic Inductive Flowmeter



Stainless Steel



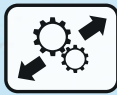
Flow and Temperature Measurement



Switching Function



Resettable and Grand Total



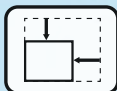
2 Configurable Outputs



Operational with Gloves



Rotating Color Display



Space Saver



[Learn More on Page 17](#)

PSD Digital Pressure Sensor

- Economical Solution for Liquids or Gases
- Analog Output, Switchable 4-20 mA or 0-10 V
- Switching Output with 2 PNP Transistors
- Easy to Read and Program LED Display
- Rotatable Display and Electrical Connection
- Ranges Available from 0...30 to 0...7500 PSI



NFC



[Learn More on Page 29](#)

Featured Product Groups

Monitoring Bulk Media? Meet Our Solutions

NIR-9: Rotating Vane Switches

NMF: Membrane Switches

NSC: Capacitive Switches

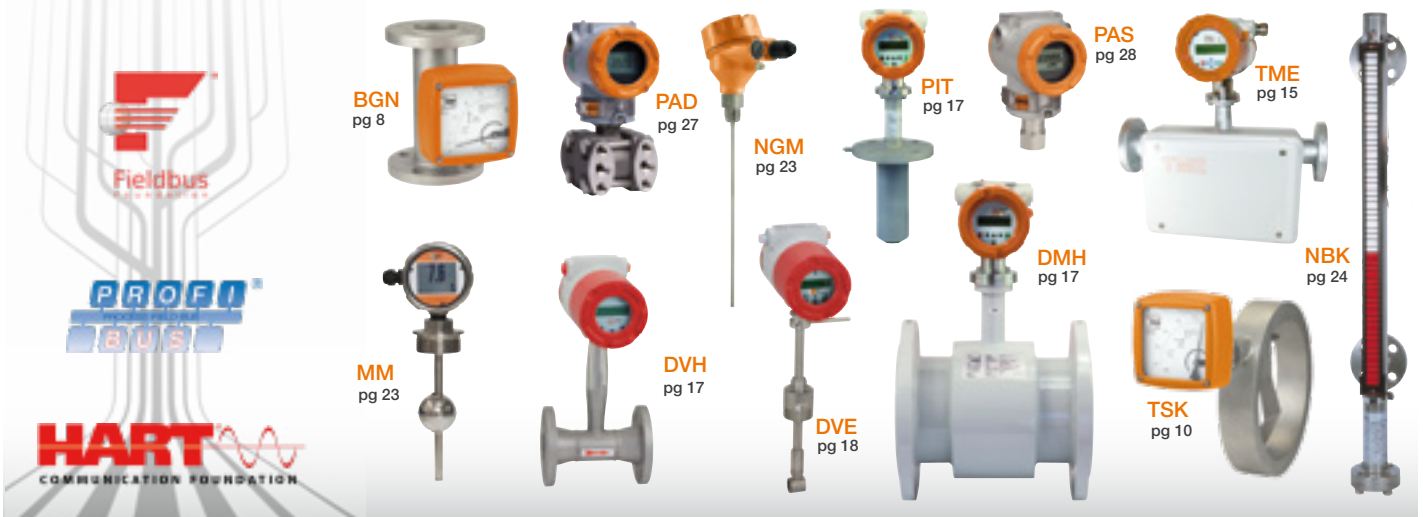
NSV: Vibrating Switches



Learn More on Page 22

Communication for Process Automation

- KOBOLD Offers Many Models With Communication Protocol





Flow

KSR/SVN

Flow Switch for Liquid or Gas

Stainless Steel, Glass



Water: 0.03...4 GPH
Air: 0.1...13 SCFH
 t_{max} 160 °F; p_{max} 230 PSIG
Connection: 1/4" NPT

KSV

Economical Micro-Flowmeter

Bodies: Polysulfone
Fittings: Stainless Steel or Brass



Water: 0.04...0.4 GPH to 2...20 GPM
Air: 0.3...3 SCFH to 10...100 SCFH
 t_{max} 250 °F; p_{max} 87 PSIG
Connection: 1/8" NPT
Accuracy: \pm 6% of Full Scale

KFR

Acrylic Flowmeter for Liquid or Gas

Acrylic



Water: 0.2...2 GPH to 2...20 GPM
Air: 0.1...1 SCFH to 10...100 SCFH
 t_{max} 150 °F; p_{max} 100 PSIG
Connection: 1/8" NPT, 1/4" NPT, 1" NPT
Accuracy: \pm 2 – 5% of Full Scale

KSK

All-Plastic Flowmeter with Optional Switch

Polyamide, Polysulfone



Water: 0.006...0.05 GPM to 11.8...60 GPM
Air: 0.06...0.27 SCFH to 3.5...18.3 SCFH
 t_{max} 180 °F; p_{max} 145 PSIG
Connection: 3/8"...1" NPT
or Socket Glue-in Connection
Accuracy: Cl. 4 According to VDI

KSM

All-Plastic Flowmeter with Optional Switch

Polyamide, Polysulfone



Water: 0.06...0.66 GPM to 35...264 GPM
Air: 0.5...3 SCFH to 50...400 SCFH
 t_{max} 140 °F; p_{max} 145 PSIG
Connection: 1"...2-1/2" NPT
or Socket Glue-in Connection
Accuracy: Cl. 4 According to VDI

URB

Glass Tube Flowmeter

PVC



Water: 2.6...26 GPH to 26...260 GPM
Air: 11...110 SCFH to 110...1,100 SCFH
 t_{max} 150 °F; p_{max} 43 PSIG
Connection: 1/2"...1-1/4" NPT
Accuracy: Cl. 4 According to VDI

KDF-2/KDG-2

Micro-Flowmeter and Switch

Stainless Steel

ATEX



Water: 0.025...2.5 l/h to 16...160 l/h
Air: 0.5...5 NI/h to 500...5,000 NI/h
 t_{max} 100 °C; p_{max} 16 bar
Connection: 1/4" NPT, G 1/4, 8 mm Hose
Accuracy: \pm 2.5 % q_G = 50 %

KDF-9/KDG-9

Micro-Flowmeter with Switch

Stainless Steel



Water: 0.02...0.25 l/h to 10...100 l/h
Air: 2...20 NI/h to 300...3000 NI/h
 t_{max} 100 °C; p_{max} 16 bar
Connection: 1/4" NPT, G 1/4, 8 mm Hose
Accuracy: \pm 3 % q_G = 50 %

SWK

Compact Variable Area Flowmeters and Switches

Brass, Stainless Steel, PVC



Water: 0.05...0.1 L/min to 13...24 L/min
 t_{max} 210 °F; p_{max} 3,600 PSIG
Connection: G 1/2
Accuracy: \pm 4% of Full Scale



URM

Glass Tube Flowmeter Stainless Steel, PVC



Water: 0.06...0.6 GPH to 11...110 GPM
Air: 0.11...1.1 SCFH to 30...300 SCFM
 t_{max} 210 °F; p_{max} 230 PSIG
Connection: 1/4"...3" NPT
Accuracy: Cl. 4 According to VDI

URK

Variable Area Flowmeter with Fixed Flange Stainless Steel



Water: 0.004...0.04 GPM to 66...220 GPM
Air: 0.011...0.11 SCFH to 30...300 SCFM
 t_{max} 210 °F; p_{max} 230 PSIG
Connection: 1/2"...3" ANSI
Accuracy: Cl. 4 According to VDI

URL

Glass Tube Flowmeter with Flange PVC, PTFE



Water: 0.26...2.6 GPH to 66...660 GPH
Air: 0.35...3.5 SCFH to 350...3,500 SCFH
 t_{max} 212 °F; p_{max} 85 PSIG
Connection: 1/2"...1-1/2" ANSI
Accuracy: Cl. 4 According to VDI

V31

High Accuracy Variable Area Flowmeter/Switch Stainless Steel, PVC, PVDF

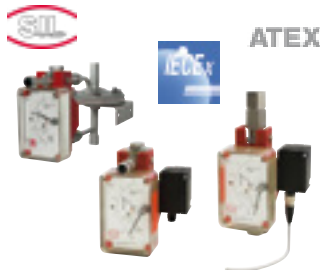


ATEX

Water: 0.3...3.3 GPH to 4.4...44 GPM
Air: 0.088...0.88 SCFH to 10.6...106 SCFM
 t_{max} 176 °F; p_{max} 210 PSIG
Connection: 1/4"...2" NPT, 1/2"...1" ANSI
Accuracy: $\pm 1.6\%$ Liquids, $\pm 2.5\%$ Gases (VDI)

KDS

All Metal, Low Volume Variable Area Flowmeter Stainless Steel



Water: 0.026...0.26 GPH to 5...50 GPH
Air: 0.1...1 SCFH to 20...200 SCFH
 t_{max} 260 °F; p_{max} 580/910 PSIG
Connection: 1/4" NPT
Accuracy: $\pm 3\%$ of Full Scale
Options: Analog Output, Inductive Contacts

BGK

All Metal, Low Volume Variable Area Flowmeter Stainless Steel

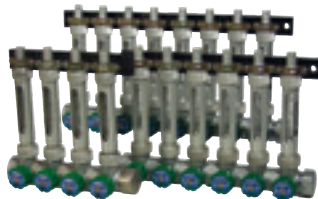


Water: 0.026...0.26 GPH to 5...50 GPH
Air: 0.1...1 SCFH to 20...200 SCFH
 t_{max} 260 °F; p_{max} 580 PSIG
Connection: 1/2"...1" ANSI
Accuracy: $\pm 3\%$ of Full Scale
Options: Analog Output, Inductive Contacts

USR

Glass Tube Flowmeters and Manifold Valves for Liquids Brass

NEW



Water: 0.01...0.1 to 0.25...2.5 GPM
 t_{max} 210 °F; p_{max} 230 PSIG
Inlet Connection: 1" NPT
Outlet Connection: 1/4" or 3/8" NPT, or Hose Conn.
Accuracy: Cl. 2.5 According to VDI

UVR/UTR

Glass Tube Variable Area Flowmeter with Needle Valve Stainless Steel, POM



Water: 2.6...26 GPH to 52.8...528 GPH
Air: 3.5...35 SCFH to 176...1,760 SCFH
 t_{max} 210 °F; p_{max} 145 PSI
Connection: 3/8" NPT, 1/2" NPT
Accuracy: Cl. 4 According to VDI

UTS

Variable Area Flowmeter for Gas Burners Brass



Air: 0.40...4.0 SCFH to 10...100 SCFH
 t_{max} 150 °F; p_{max} 45 PSIG
Connection: 1/4" NPT, G 1/4, M18x1.5
Accuracy: Cl. 4 According to VDI



Flow

BGN

All Metal Armored Variable Area Flowmeter

Stainless Steel, Special Materials on Request

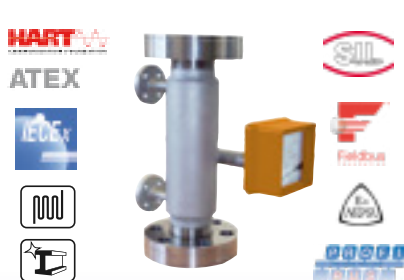


Water: 0.002...0.02 GPM to 60...570 GPM
Air: 0.008...0.08 SCFM to 140...1,400 SCFM
 t_{max} 660 °F; p_{max} 580 PSIG
Connection: 1/2"...6" ANSI, 1/4"...2" NPT
Options: Analog Output 4-20 mA, Contacts
Accuracy: $\pm 1.6 - 2.2\%$ of Full Scale

BGN - HIGH PRES.

All Metal, High Pressure, Armored Variable Area Flowmeter

Stainless Steel, Special Materials on Request



Water: 0.002...0.02 GPM to 60...570 GPM
Air: 0.008...0.08 SCFM to 140...1,400 SCFM
 t_{max} 660 °F; p_{max} 8,700 PSIG
Connection: 1/2"...6" ANSI
Options: Analog Output, BUS-Interface, Heat Jacket
Accuracy: $\pm 1.6 - 2.2\%$ of Full Scale

BGF

All Metal Variable Area Flowmeter Horizontal or Vertical Flow

Stainless Steel, Special Materials on Request



Water: 0.044...0.44 GPM to 26.4...264 GPM
Air: 0.17...1.7 SCFM to 100...1000 SCFM
 t_{max} 390 °F; p_{max} 580 PSIG
Connection: 1/2"...3" ANSI, 1/4"...2" NPT
Options: Analog Output, BUS-Interface, Heat Jacket
Accuracy: $\pm 1.6\%$ of Full Scale

SV

Float Type Flowmeters and Switches

Brass, Stainless Steel



Water: 0.075...0.35 GPM to 2.5...40 GPM
Air: 0.25...1.25 SCFM to 10...150 SCFM
 t_{max} 210 °F; p_{max} 145 PSIG
Connection: 1/4"...1-1/4" NPT
Accuracy: $\pm 5\%$ of Full Scale

S-SERIES

All Metal Variable Area Flow Switch for Liquids or Gases

Brass, Stainless Steel



Water: 0.075...0.25 GPM to 1...14 GPM
Air: 0.2...1.1 SCFM to 3...70 SCFM
 t_{max} 240 °F; p_{max} 5,000 PSIG
Connection: 1/4"...3/4" NPT
Accuracy: $\pm 5\%$ of Full Scale

SMV

High Pressure, All Metal Flowmeter and Switch

Brass, Stainless Steel



Water: 0.05...0.15 GPM to 4...40 GPM
Air: 0.25...1.2 SCFM to 5...130 SCFM
 t_{max} 210 °F; p_{max} 5,000 PSIG
Connection: 1/4"...1-1/4" NPT
Accuracy: $\pm 5\%$ of Full Scale

SMO/SMW

High Pressure All Metal Flowmeter and Switch, Horizontal or Vertical Flow

Brass, Stainless Steel



Water: 0.04...0.6 GPM to 8...34 GPM
Air: 0.2...3.5 SCFM to 30...130 SCFM
 t_{max} 210 °F; p_{max} 5,000 PSIG
Connection: 1/4"...3/4" NPT
Accuracy: $\pm 5\%$ of Full Scale

SMN

All Metal Flow Switch for Liquids Horizontal or Vertical Flow

Brass, Stainless Steel



Water: 0.4...13 GPM
 t_{max} 210 °F; p_{max} 5,000 PSIG
Connection: 1" NPT
Accuracy: $\pm 5\%$ of Full Scale

VKP

Economical Plastic Flowmeter and Switch

Polysulfone



Water: 0.5...5 GPM to 5...26 GPM
Oil: 0.5...4.5 GPM to 3...20 GPM
 t_{max} 250 °F; p_{max} 230 PSIG
Connection: 1/2", 3/4", 1" NPT,
Solder and Glue Connection Available
Accuracy: $\pm 5\%$ of Full Scale



VKG

Viscosity Compensated Flowmeter and Switch Brass, Stainless Steel



Viscosity Range: 1...540 cSt
Oil: 0.03...0.12 GPM to 2...21 GPM
 t_{max} 210 °F; p_{max} 175 PSIG
Connection: 1/4"...1" NPT
Accuracy: \pm 5% of Full Scale

VKM

All Metal Viscosity Compensated Flowmeter and Switch Brass, Stainless Steel



Viscosity Range: 1...540 cSt
Oil: 0.03...0.12 GPM to 2...20 GPM
 t_{max} 210 °F; p_{max} 5,000 PSIG
Connection: 1/4"...1" NPT
Accuracy: \pm 5% of Full Scale

VKA

OEM Viscosity Compensated Flowmeter Brass



Viscosity Range: 30...540 cSt
Oil: 2...6.3 GPM to 8...26 GPM
 t_{max} 210 °F; p_{max} 3,600 PSIG
Connection: 1/2", 3/4" NPT
Accuracy: \pm 4% of Full Scale

BVB

Manifold Valves for Multiple Installations Aluminum



Suitable for Models SV (DSV), VKA, VKG, VKM
 t_{max} 210 °F; p_{max} 930 PSIG
Connection: 1/2" NPT

PSR

Paddle Flow Switch Brass, Stainless Steel



Water: 0.9...1.3 GPM to 9.2...15 GPM
 t_{max} 230 °F; p_{max} 1,450 PSIG
Connection: 1/4"...1-1/2" NPT

PS/PSE

Paddle Flow Switch Brass, Stainless Steel



Water: 16...22 GPM to 101...141 GPM
 t_{max} 230 °F; p_{max} 1,450 PSIG
Connection: 1/2" NPT

PPS

Plastic Paddle Flow Switch Polysulfone



Water: 5...9.5 GPM to 19... 28.5 GPM
 t_{max} 225 °F; p_{max} 145 PSIG
Connection: 1" NPT
Repeatability: \pm 3% of Switchpoint

LPS

Air Flow Switch for HVAC Ducts Brass



Air: 195...1,575 FPM
 t_{max} 185 °F; p_{max} Atmospheric
Connection: Flange

FPS

Insertion Paddle Switch for Liquids Brass, Stainless Steel



Water: 0.9...4.4 GPM to 375...760 GPM
 t_{max} 250 °F; p_{max} 435 PSIG
Connection: 1" NPT



Flow

DWN/DWS

Paddle Bellows Flowmeter and Switch

Brass, Stainless Steel, PVC



Water: 0.8...14.5 GPM to 13.2...158 GPM
 t_{max} 210 °F; p_{max} 230 PSIG
 Connection: 1/2" ... 2" NPT, 1/2" ... 2" ANSI
 Accuracy: $\pm 3 - 5\%$ of Full Scale

DWU

Paddle Bellows Flowmeter and Switch

Brass, Stainless Steel, PVC



Liquid: 0.26...1.3 GPM to 3,600...15,800 GPM
 t_{max} 210 °F; p_{max} 230 PSIG
 Connection: 3/8" ... 2" NPT, 1/2" ... 2" ANSI,
 Weld-on Flange for 1-1/2" ... 24" Pipe
 Accuracy: $\pm 3 - 5\%$ of Full Scale

DPT

Target Type Flowmeter

Brass, Stainless Steel



Water: 1.5...8 GPM to 225...500 GPM
 t_{max} 175 °F; p_{max} 580 PSIG
 Connection: 3/8" ... 3" NPT
 Accuracy: $\pm 3\%$ of Full Scale

DWD

Paddle Bellows Flowmeter and Switch

Brass, Stainless Steel, PVC



Water: 0.26...2.6 GPM to 1,580...15,800 GPM
 t_{max} 250 °F; p_{max} 360 PSIG
 Connection: 3/8" ... 2" NPT, 3/8" ... 2" ANSI,
 Weld-on Flange 1-1/2" ... 20" Pipe
 Accuracy: $\pm 1.5\%$ of Full Scale

TSK

Flap Style Flowmeter

Steel, Stainless Steel, PP, PVDF, Hastelloy®



Water: 6.6...26.4 GPM to 880...6,600 GPM
 t_{max} 570 °F; p_{max} 580 PSIG
 Connection: 1-1/2" ... 20" ANSI Wafer
 Accuracy: $\pm 2.5\%$ of Full Scale

HND-F

Flow, Humidity, and Temperature Hand-Held Measuring Unit



Measuring Range:
 Water: 0.16...16 ft/sec
 Air: 1.8...65 ft/sec
 Humidity: 0...100% rH
 Temperature: -40...250 °F, -110...480 °F
 Accuracy: from $\pm 0.1\%$ of Full Scale

DRS

OEM Turbine Flow Sensor

Brass, Stainless Steel, PPO



Water: 0.6...10.5 GPM
 t_{max} 300 °F; p_{max} 2,900 PSIG
 Connection: 1/2" NPT, 3/4" NPT
 Accuracy: $\pm 1.5\%$ of Full Scale

TUR

All Plastic Turbine Flowmeter

PVC, PVDF



Water: 5...88 GPM to 11...440 GPM
 t_{max} 160 °F; p_{max} 145 PSIG
 Connection: 2" or 4" ANSI
 Accuracy: $\pm 1\%$ of Full Scale

DPE

Paddle Wheel Flowmeter

Brass, Stainless Steel



Water: 1.5...8 GPM to 15...200 GPM
 t_{max} 175 °F; p_{max} 580 PSIG
 Connection: 1/2" ... 3" NPT
 Accuracy: $\pm 2.5\%$ of Full Scale



DRB

Paddle Wheel Flowmeter Brass, Stainless Steel



Water: 1.5...8 GPM to 15...200 GPM
 t_{max} 175 °F; p_{max} 230 PSIG
 Connection: 1/2"...3" NPT
 Accuracy: \pm 3.0% of Full Scale

TUV

Turbine Wheel Flowmeter Stainless Steel



Water: 0.3...1.5 l/min to 35...400 l/min
 t_{max} 350 °C; p_{max} 640 bar
 Connection: G 1/4...1-1/2
 Accuracy: \pm 1% of Reading

SFL

High Precision Turbine Flow Sensor PVDF, Stainless Steel



Water: 0.5...20 l/min
 t_{max} 90 °C; p_{max} 250 bar
 Connection: G 3/8
 Accuracy: \pm 1% of Full Scale

DOT

Turbine Flowmeter/Monitor for Low Viscosity Liquids Stainless Steel



Water: 0.5...5 GPM to 240...2,400 GPM
 t_{max} 250 °F; p_{max} 3,600 PSIG
 Connection: 1/2"...2" NPT, 1/2"...6" ANSI
 Accuracy: \pm 0.5% of Full Scale

EDM

Battery Powered Rate Meter and Totalizer

Polyamide, Brass, Stainless Steel,
PVC, Aluminum, PVDF



Water: 0.3...3 GPM to 30...300 GPM
 t_{max} 250 °F; p_{max} 1,500 PSIG
 Connection: 1/2"...2" NPT
 Accuracy: \pm 1 - 3% of Full Scale

EDM-8000

Battery Powered Water Meter and Totalizer PVC



Water: 1...10 GPM to 60...600 GPM
 t_{max} 140 °F; p_{max} 150 PSIG
 Connection: 1/2"...4" NPT, ANSI Flange, Socket
 Accuracy: \pm 3% of Reading

PEL-L

Low Volume Turbine Wheel Flowmeter Nylon, Stainless Steel, Titanium



Water: 0.006...0.1 to 10...500 l/min
 t_{max} 135 °C; p_{max} 345 bar
 Connection: R 1/4...R 1/2, Wafer Flange DN 40/50,
 1/2" Glue-in Connection, Hose-Connection
 Accuracy: \pm 1.25% of Reading

PEL-M

Low Volume Turbine Flowmeter Stainless Steel, PVC, Titanium



Water: 1...65 to 10...500 l/min
 t_{max} 135 °C; p_{max} 345 bar
 Connection: R 1/2...R 1-1/4, Wafer Flange DN 40/50,
 1/2"...1-1/4" Glue-in Connection
 Accuracy: \pm 1.25% of Reading

DPM

Pelton Wheel Flow Sensor Brass, Stainless Steel



Water: 0.24...4.8 GPH to 0.8...80 GPH
 t_{max} 175 °F; p_{max} 230 PSIG
 Connection: 1/8" NPT, 1/4" NPT
 Accuracy: \pm 1 - 2.5% of Full Scale



Flow

DPL

All Plastic Low Flow Paddle Wheel Sensor

Polypropylene



Water: 0.4...8 GPH to 16...400 GPH
 t_{max} 160 °F; p_{max} 145 PSIG
Connection: G 1/2, Hose Barb
Accuracy: \pm 2.5% - 5% of Full Scale

KFF-1/KFG-1

Low Volume, Rotating Vane Flowmeter

Brass, PTFE, PPS



Water: 13...100 mL/min to 1...10 L/min
Air: 20...100 mL_N/min to 100...500 L_N/min
 t_{max} 120 °F; p_{max} 500 PSIG
Connection: 1/8"...1/2" Compression
Accuracy: \pm 3% of Full Scale

KFF-3/KFG-3

Low Volume, Rotating Vane Flowmeter

Brass, PPS



Water: 13...100 mL/min to 1...10 L/min
Air: 20...100 mL_N/min to 100...500 L_N/min
 t_{max} 120 °F; p_{max} 500 PSIG
Connection: 1/8"...1/2" Compression
Accuracy: \pm 3% of Full Scale

DF

Paddle Wheel Flowmeters, Totalizers, Transmitters, and Switches

Polysulfone, PP, Brass, Stainless Steel



Water: 0.02...0.14 GPM to 1.5...36 GPM
 t_{max} 180 °F; p_{max} 1,450 PSIG
Connection: 1/8"...1-1/2" NPT
Accuracy: \pm 2.5% of Full Scale

DFT

Compact Paddle Wheel Flow Sensor

Brass



Water: 0.05...0.5 GPM to 0.8...15 GPM
 t_{max} 180 °F; p_{max} 230 PSIG
Connection: 1/4"...3/4" NPT
Accuracy: \pm 2.5% of Full Scale

DRH

Paddle Wheel Flow Sensor

POM, PVDF, Brass, Stainless Steel



Water: 0.05...0.2 GPM to 0.66...13.2 GPM
 t_{max} 175 °F; p_{max} 580 PSIG
Connection: 3/8" NPT, 1" NPT
Accuracy: \pm 2.5% of Full Scale

DRG

Paddle Wheel Flow Sensor

Polypropylene, Brass, Stainless Steel



Water: 0.15...3 GPM to 3...37 GPM
 t_{max} 175 °F; p_{max} 580 PSIG
Connection: 1/8"...1" NPT
Accuracy: \pm 3% of Full Scale

DTK

Pelton Wheel Flow Sensor

Stainless Steel



Water: 0.8...9.5 GPH to 16...190 GPH
 t_{max} 280 °F; p_{max} 430 PSIG
Connection: 1/4" NPT
Accuracy: \pm 2% of Full Scale

LFM

Dual-Ring Piston Pendulum Flowmeter

Stainless Steel



Water: 0.005...0.25 l/min
 t_{max} 80 °C; p_{max} 100 bar
Connection: 1/8" NPT, G 1/8, Swagelok® 6 mm
Accuracy: \pm 2.5 % of Reading

DOR

Insertion Paddle Wheel Flowmeter Stainless Steel



Water: 5.5...180 GPM to 25,000...800,000 GPM,
1...33 ft/sec
 t_{max} 300 °F; p_{max} 1,160 PSIG
Connection: 1-1/2" NPT, 2" NPT
Linearity: $\pm 1.5\%$ of Full Scale

DRZ

Rotary Piston Flowmeter Brass



Viscosity Range: 5...100 cSt
Oil: 1.6...110 GPH
 t_{max} 175 °F; p_{max} 580 PSIG
Connection: 1/8" NPT, 1/4" NPT
Accuracy: $\pm 1\%$ of Reading

OVZ

Economical Oval-Gear Flowmeter for Oils POM, Aluminum



Viscosity Range: 10...800 cSt
Oil: 0.08...2.1 GPM to 0.42...10.6 GPM
 t_{max} 175 °F; p_{max} 580 PSIG
Connection: 1/4"...3/4" NPT
Accuracy: $\pm 2.5\%$ of Full Scale

DON

Positive Displacement Flowmeter Aluminum, Stainless Steel



Viscosity Range: 0...1,000,000 cP
Oil: 0.13...9.5 GPH to 40...660 GPM
 t_{max} 300 °F; p_{max} 1,450 PSIG
Connection: 1/8"...4" NPT, ANSI 1"...4"
Accuracy: $\pm 0.2 - 1\%$ of Reading

DON-H

Positive Displacement Flowmeter for High Pressures Aluminum, Stainless Steel



Viscosity Range: 0...1,000,000 cP
Oil: 0.13...9.5 GPH to 0.26...10.6 GPM
 t_{max} 250 °F; p_{max} 5,800 PSIG
Connection: 1/8"...1/2" NPT
Accuracy: $\pm 0.2 - 1\%$ of Reading

DOE

OEM Oval Wheel Flowmeter Aluminum, Stainless Steel

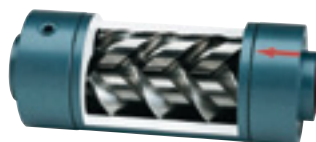
NEW



Viscosity Range: 0...1,000 cP
Oil: 0.14...9.5 GPH to 0.27...10.56 GPM
Connection: 1/8"...1/2" NPT, G 1/8...1/2
Accuracy: $\pm 1\%$ of Reading

OMG

Screw Type Flowmeter Cast Iron, Stainless Steel



Viscosity Range: 1...5,000 cSt
Oil: 0.026...2.6 GPM to 13...1,300 GPM
 t_{max} 390 °F; p_{max} 6,000 PSIG
Connection: 1/2"...3" NPT, 1/2"...6" ANSI
Accuracy: $\pm 0.3\%$ of Reading

OME

Helical Gear Flowmeter Aluminum



Viscosity Range: 1...5,000 cSt
Oil: 0.03...2.6 GPM to 0.92...92 GPM
 t_{max} 250 °F; p_{max} 600 PSIG
Connection: 1/2"...1-1/2" NPT
Accuracy: $\pm 0.3\%$ of Reading

DZR

Gear Wheel Flowmeter Cast Iron, Stainless Steel

ATEX



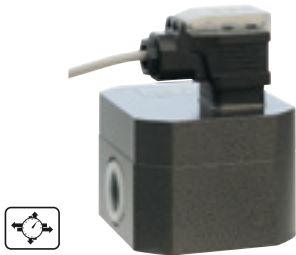
Viscosity Range: 20...5,000 cSt
Oil: 0.008...2 l/min to 3...700 l/min
 t_{max} 150 °C; p_{max} 400 bar
Connection: G 1/8...1
Accuracy: $\pm 0.3 - 1\%$ of Reading



Flow

KZA

Gear Wheel Flowmeter Aluminum



Viscosity Range: 20...4,000 cSt
Oil: 0.02...4 l/min to 1...200 l/min
 t_{max} 80 °C; p_{max} 160 bar
Connection: G 1/4... 1
Accuracy: \pm 0.3 - 3% of Reading

ZDM

Positive Displacement Flowmeter Cast Iron, Stainless Steel



Viscosity Range: 0.3...1,000,000 cSt
Oil: 0.0005...0.5 GPM to 0.4...138 GPM
 t_{max} 410 °F; p_{max} 6,500 PSIG
Connection: 3/8"...1-1/2" NPT
Accuracy: \pm 0.3% of Reading

KAL-D

Compact Thermal Flow Switch Stainless Steel



Water: 0.15...6.6 ft/sec
 t_{max} 175 °F; p_{max} 580 PSIG
Connection: 1/4" or 1/2" NPT, M12 x 1

KAL-K

Thermal Flow Switch Stainless Steel



Water: 0.15...6.6 ft/sec
 t_{max} 250 °F; p_{max} 1,450 PSIG
Connection: 1/2"...3/4" NPT, Tri-Clamp®

KAL-A

Thermal Flow Sensor Stainless Steel



Water: 0.15...6.6 ft/sec
 t_{max} 175 °F; p_{max} 1,450 PSIG
Connection: 1/2"...3/4" NPT, 1-1/2" Tri-Clamp®
Linearity: \pm 10% of Full Scale

KAL-L

Thermal Air Flow Sensor Brass



Air: 3.3...65 ft/sec
 t_{max} 250 °F; p_{max} 120 PSIG
Connection: 1/2" NPT, Duct Flange
Accuracy: \pm 10% of Reading

KAL/KAL-E

Temperature Compensating Thermal Flow Switch Brass, Stainless Steel



Water: 0.15...6.6 ft/sec
 t_{max} 250 °F; p_{max} 1,450 PSIG
Connection: 1/4"...1-1/2" NPT

DVK

Calorimetric Switch, Flowmeter, and Totalizer Stainless Steel



Air: 1...10 LPM to 600...12,000 LPM
 t_{max} 50 °C; p_{max} 15 bar
Connection: G 1/4...G 2
Accuracy: \pm 5% of Full Scale

KAH

Air Velocity Sensor Polycarbonate



Air: 0...2,000/3,000/4,000 ft/min
Output Signal: 0-10 V_{DC} or 4-20 mA
Supply Voltage: 24 V_{AC/DC}
Connection: Mounting Adapter
Accuracy: \pm (0.2 m/s + 3% of Reading)



MAS

Mass Flowmeter for Gases Polyamide, Stainless Steel



Air: 0...10 SCCM to 0...500 SLPM
 t_{max} 120 °F; p_{max} 500 PSIG
 Connection:
 1/4" NPT, 1/2" NPT; 1/4" or 1/2" Swagelok®
 Accuracy: $\pm 1.5\%$ of Full Scale

DMS

Digital Mass Flowmeter and Regulator Stainless Steel



Air: 0.1...3.7 to 0...185 NL/min
 t_{max} 120 °F; p_{max} 500 PSIG
 Connection:
 1/4" or 1/2" NPT, 1/8"...1/2" Compression
 Accuracy: $\pm 1\%$ of Full Scale

DMW

Direct Mass Flowmeter and Controller Aluminum, Stainless Steel



Air: 5...100 ml/min to 300...6,000 l/min
 t_{max} 50 °C; p_{max} 10 bar
 Connection: G 1/4"...G 1
 Accuracy: $\pm 3\%$ of Full Scale

KME

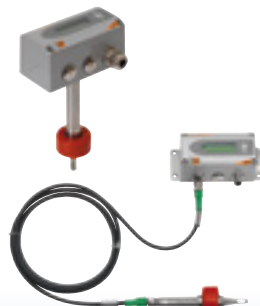
Compact Inline Flowmeter Aluminum



Air: 0.12...44.4 to 1.3...500 SCFM
 t_{max} 140 °F; p_{max} 230 PSIG
 Connection: 1/2"...2" NPT
 Accuracy: $\pm 3.0\%$ of Reading, $\pm 0.3\%$ of FS

KMT-1/-2/-3

Thermal Mass Flowmeter Stainless Steel



Air: 0.32...63 to 3.5...1,400 Nm³/s
 t_{max} 176 °F; p_{max} 230 PSIG
 Connection: 1/2"...2" NPT with Ball Valve
 Accuracy: $\pm 1.5\%$ of Reading,
 + (0.5 - 0.8 of Full Scale)

KMT-4

Thermal Mass Flowmeter Stainless Steel



Air: 2.8...1,397 to 263...263,350 Nm³/s
 t_{max} 80 °C; p_{max} 16 bar
 Connection: R 1/2, Male for Insertion
 (DN 65 ... DN 700)
 Accuracy: $\pm 1.5\%$ of Reading, $\pm 0.8\%$ of Full Scale

KEC

Thermal Energy Flowmeter Stainless Steel



Air: 0.33...300 ft/sec to 0.33...735 ft/sec
 t_{max} 350 °F; p_{max} 1,450 PSIG
 Connection: 1/2"...2" NPT, 1/2"...3" ANSI
 Accuracy: $\pm 1.5\%$ of Reading, $\pm 0.3\%$ of FS

HPC

Mini Coriolis Mass Flowmeter Stainless Steel



Water: 0...44 lbs/hr to 0...350 lbs/hr
 t_{max} 350 °F; p_{max} 5,800/8,700 PSIG
 Connection: 1/2" NPT, GryoLock/Swagelok
 Accuracy: $\pm 0.15\%$ of Reading

TME/UMC-4

Coriolis Mass Flowmeter Stainless Steel



Water: 2.2...22 lbs/min to 220...2,200 lbs/min
 t_{max} 350 °F; p_{max} 580 PSIG
 Connection: 1/2"...3" ANSI
 Accuracy: $\pm 0.15\%$ of Reading \pm Zero-point Stability



Flow

TMU/UMC-4

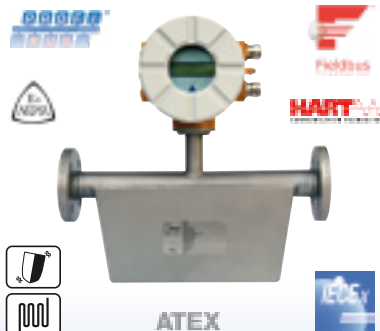
Coriolis Mass Flowmeter Stainless Steel, Hastelloy®



Water: 0...1,320 lbs/hr to 0...2,200 tons/hr
 t_{\max} 500 °F; p_{\max} 580 PSIG
 Connection: 1/2"...16" ANSI, 1/4" NPT, 1/2" NPT
 Accuracy: $\pm 0.1\%$ of Reading \pm Zero-point Stability

TMU/UMC-3

Coriolis Mass Flowmeter Stainless Steel, Hastelloy®



Water: 0...1,320 lbs/hr to 0...2,200 tons/hr
 t_{\max} 500 °F; p_{\max} 580 PSIG
 Connection: 1/2"...12" ANSI
 Accuracy: $\pm 0.1\%$ of Reading \pm Zero-point Stability

TMU-..AC

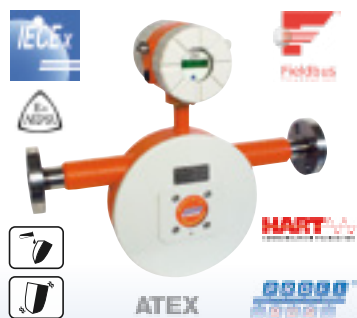
Coriolis Mass Flowmeter with Heating Jacket Stainless Steel, Hastelloy®



Water: 0...1,320 lbs/hr to 0...2,200 tons/hr
 t_{\max} 500 °F; p_{\max} 580 PSIG
 Connection: 1/2"...12" ANSI
 Accuracy: $\pm 0.1\%$ of Reading \pm Zero-point Stability

TM/UMC-3

Coriolis Mass Flowmeter Stainless Steel, Hastelloy®, Monel®, Tantalum, Nickel



Water: 0.003...0.3 lbs/min to 220...2,400 lbs/min
 t_{\max} 500 °F; p_{\max} 580 PSIG
 Connection: 1/4"...1/2" NPT, 1/2"...4" ANSI
 Accuracy: $\pm 0.1\%$ of Reading \pm Zero-point Stability

KPL

Differential Pressure Orifice Plate Steel, Stainless Steel, Hastelloy-C®, Titanium, Monel®, Tantalum



Ranges: for Liquids, Gases, Steam
 Connection: ANSI 2"...24", DN 50...600
 t_{\max} 500 °C; p_{\max} PN 420 According to ISO 5167-1

ANU

Differential Pressure Pitot Tube Stainless Steel



Shown with Model PAD
 Connection: 1" ... 2" NPT, G 1 ... 2,
 DN ANSI 1" ... 4", 25 ... 100
 Probe Length: 50 ... 8000 mm (2" ... 315")
 t_{\max} 900 °C; p_{\max} PN 250

DUS

Differential Pressure Nozzle Steel, Stainless Steel



Shown with Model PAD
 Nominal Diameter: DN 50...600 (2"...24")
 t_{\max} 560 °C; p_{\max} 420 bar

DVT

Differential Pressure Venturi Tube Steel, Stainless Steel



Shown with Model PAD
 Nominal Diameter: DN 50...1200 (2"...48")
 t_{\max} 560 °C; p_{\max} 420 bar

KEL

Differential Pressure Flowmeters Brass, Stainless Steel



Water: 0.1...0.5 GPM to 400...2,000 GPM
 t_{\max} 250 °F; p_{\max} 230 PSIG
 Connection: 1/2"...1-1/2" NPT, 1/2"...8" ANSI Wafer
 Accuracy: $\pm 2 - 5\%$ of Full Scale



RCD

Differential Pressure Flowmeter

Brass, Stainless Steel



Water: 0.2...0.88 GPM to 100...600 GPM
 t_{max} 210 °F; p_{max} 580 PSIG
 Connection: 1/2"...3" NPT
 Accuracy: $\pm 3\%$ of Full Scale

RCM

Direct Reading Flowmeter

Bronze, Monel®, Stainless Steel



Water: 0.3...2 GPM to 400...3,000 GPM
 Air: 1.5...10 SCFM to 3,000...20,000 SCFM
 t_{max} 350 °F; p_{max} 400 PSIG
 Connection:
 1/4"...3" NPT, 1/2"...8" ANSI Wafer
 Accuracy: $\pm 3\%$ of Full Scale

MIM

All-Metal Electromagnetic Flowmeter

Stainless Steel



IO-Link

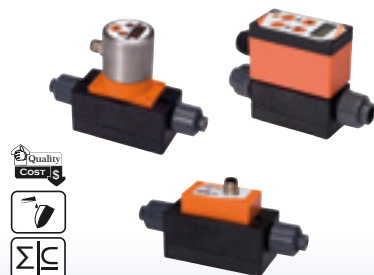


Water: 0.011...2.64 GPM to 0.11...26 GPM
 t_{max} 158 °F; p_{max} 230 PSIG
 Connection: 1/4"...3/4" NPT
 Accuracy: $< \pm (0.8\% \text{ of Reading} + 0.5\% \text{ of Full Scale})$

MIK

Economical Magmeter

PPS/Stainless Steel,
 PVDF/Hastelloy®/Tantalum



Water: 0.18...7.8 GPM to 9.5...180 GPM
 t_{max} 176 °F; p_{max} 145 PSIG
 Connection: 1/4"...2" NPT or Glue Socket
 Accuracy: $\pm 2\%$ of Full Scale

PIT

Insertion Magnetic Flowmeter

Stainless Steel, PTFE or PFA Clad



Water: 3.3...33 ft/sec
 t_{max} 300 °F; p_{max} 580 PSIG
 Connection: Weld-on, 2" or 3" ANSI
 Accuracy: $\pm 1.5\%$ of Reading, $\pm 0.5\%$ of Full Scale

PITE

Insertion Magnetic Flowmeter

Stainless Steel, PTFE or PFA Clad



Water: 3.3...33 ft/sec
 t_{max} 100 °C; p_{max} PN 16
 Connection: ANSI 3"...16", Weld-on Nozzle $\phi 40$ mm,
 Sensor with Union Nut M52x2
 for Pipelines DN 80...400
 Accuracy: $\pm 1.5\%$ of Full Scale

DMH

Magnetic-Inductive Flowmeter

Lining: Hard or Soft Rubber, PTFE/PFA



Water: 0.29...26.4 GPM to 431.6...43,333 GPM
 t_{max} 300 °F; p_{max} 580 PSIG
 Connection: 1/2"...24" ANSI
 Accuracy: $\pm 0.3\%$ of Full Scale $\pm 0.01\% \times Q_{max}$

DVZ

Vortex Flowmeter, Switch, Transmitter, and Totalizer

PPS/Brass, PPS/Stainless Steel



Water: 0.13...1.2 GPM to 2.6...26.5 GPM
 t_{max} 176 °F; p_{max} 290 PSIG
 Connection: 1/4"...1" NPT
 Accuracy: $\pm 2.5\%$ of Full Scale

DVH

Multivariable Vortex Flowmeter

Stainless Steel



Water: 0.89...22 GPM to 141...4,270 GPM
 Air: 1.8...18 SCFM to 2,071...203,000 SCFM
 t_{range} -328...750 °F; p_{max} 1,450 PSIG
 Connection: 1/2"...8" ANSI
 Option: Integrated Temperature and Pressure Sensor,
 Wafer Type
 Accuracy: $\pm 1\%$ Reading for Gas & Steam,
 $\pm 0.7\%$ Reading for Liquids



Flow

DVE

Vortex Flowmeter Stainless Steel



Water: 5.2...157 to 284...8,537 m³/h

Air: 889...1,463 Nm³/h to

26,915...2,467,081 Nm³/h

t_{max} 400 °C; p_{max} 100 bar

Connection: 2" NPT, ANSI 2"

Suitable for Pipe Sizes 3"...24"

Option: Integrated Temp. and Pressure Sensor,
Installation/Removal Device

Accuracy: ± 1.2% of Reading (Water),
± 1.5% of Reading (Gas/Steam)

DOG-4

Oscillation Flowmeter for Gases Stainless Steel



Air: 0.12...12 m³/h to 60...6,000 m³/h

Pressure Drop Max: 50 mbar

t_{max} 120 °C (for EX 60 °C); p_{max} PN 40

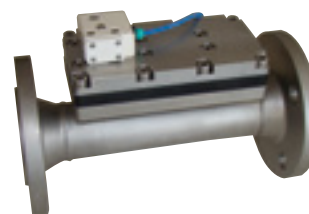
Connection:

ANSI 1" ... 8", Flange DN 25 ... 200

Accuracy: ± 1.5% of Reading

DOG-5

Oscillation Flowmeter for Gases Stainless Steel



Water: 0.075...3.75 m³/h to 70...3,500 m³/h

t_{max} 120 °C; p_{max} PN 40

Connection:

ANSI 1" ... 8", Flange DN 25 ... 200

Accuracy: ± 0.5% of Measured Value

DUK

Compact Ultrasonic Flowmeter Brass, Stainless Steel



Water: 0.02...5 GPM to 0.6...160 GPM

Turndown Ratio: 250 to 1

t_{max} 248 °F; p_{max} 230 PSIG

Connection: 1/2" ... 3" NPT

Accuracy: ± 0.7% of Reading ± 0.7% of Full Scale

DUC

Clamp-on Ultrasonic Flowmeter for Portable or Stationary Installations



t_{range} -40...300 °F

Flow Velocities: 0...98 ft/sec

Pipe Sizes: 3/8" ... 20 ft

For Use with Common Pipe Materials with Ultrasonic

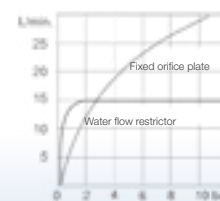
Conductive Properties like Steel and Plastic

Heat Quantity Measurement

Accuracy: up to 1%

REG

Automatic Flow Regulating Valve Brass, Stainless Steel



Viscosity Range: 1...30 cSt

Flow Rates: 0.13...10.56 GPM

t_{max} 572 °F; p_{max} 2,900 PSIG

Connection: 3/4" NPT

REG-8/-9

Automatic Flow Regulating Valve Stainless Steel



Viscosity Range: 1...30 cSt

Flow Rates: 0.25...74 GPM

t_{max} 570 °F; p_{max} 2,900 PSIG

Connection: 3/4" ... 2" ANSI Wafer,

1-1/2" ... 2-1/2" BSP

DAA/DAH

Flow Indicator with or without Rotor and Self-Cleaning Mechanism

Brass, Stainless Steel



Water: 0.1...1.0 GPM to 2.12...26.4 GPM

t_{max} 212 °F; p_{max} 232 PSIG

Connection: 1/4" ... 1-1/2" NPT

DAF

Paddle Wheel Flow Indicator for Liquids Brass, Stainless Steel, Polysulfone



Water: 0.16...0.16 GPH to 100...2,400 GPH

t_{max} 230 °F; p_{max} 235 PSIG

Connection: 1/8" ... 1-1/2" NPT

DIH

Rotating Vane Flow Indicator Brass, Stainless Steel, POM, PVDF



Water: 0.05...0.13 GPM to 0.26...13.2 GPM
 t_{max} 176 °F; p_{max} 230 PSIG
 Connection: 3/8" or 1" NPT

DIG

Rotating Vane Flow Indicator PP, Brass, Stainless Steel



Water: 0.13...3.2 GPM to 0.79...21 GPM
 t_{max} 176 °F; p_{max} 230 PSIG
 Connection: 1/8"...1" NPT

DAB

Flow Indicator with Ball Bronze



t_{max} 100 °C; p_{max} 6 bar
 Connection: G 3/4...G 3

DKB

Flow Indicator with Ball Brass



Water: 0.014...4 GPM to 0.047...27 GPM
 Air: 0.11...14 to 0.32...88 SCFM
 t_{max} 250 °F; p_{max} 85 PSIG
 Connection: 1/8"...1" NPT

DKF

Paddle Wheel Flow Indicator for Liquids Brass



Water: 0.04...0.5 GPM to 0.5...22 GPM
 t_{max} 250 °F; p_{max} 85 PSIG
 Connection: 1/8"...1" NPT

DAZ

Referencing Flap Flow Indicator Red Brass



t_{max} 390 °F; p_{max} 230 PSIG
 Connection: 1/2"...1" NPT

DAK

Flow Indicator with Flap Grey Cast Iron, Cast Steel, Stainless Steel



t_{max} 530 °F; p_{max} 580 PSIG
 Connection: 1/4"...2" NPT, 1/2"...8" ANSI

DAR

Flow Indicator with Rotor Grey Cast Iron, Cast Steel, Stainless Steel



t_{max} 500 °F; p_{max} 580 PSIG
 Connection: 1/4"...2" NPT, 1/2"...8" ANSI

DAT

Flow Indicator with Drip Tube Grey Cast Iron, Cast Steel, Stainless Steel



t_{max} 530 °F; p_{max} 580 PSIG
 Connection: 1/4"...2" NPT, 1/2"...8" ANSI



Level

M-SERIES

Custom Magnetic Float Switch
Brass, Stainless Steel, PVC, PP,
PVDF



ATEX

Density: 0.5 kg/dm³
 t_{\max} 300 °F; p_{\max} 1,450 PSIG
Connection: NPT, DIN/ANSI Flange

NCS

Magnetic Float Switch
Stainless Steel



Specific Gravity_{min}: 0.65
 t_{\max} 300 °F; p_{\max} 400 PSIG
Connection: 1/8" NPT, 1/4" NPT

NCP

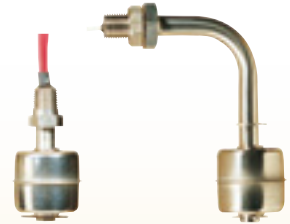
Magnetic Float Switch
Polypropylene



Specific Gravity_{min}: 0.81
 t_{\max} 225 °F; p_{\max} 100 PSIG
Connection: 1/8" NPT, 1/4" PF

OEM

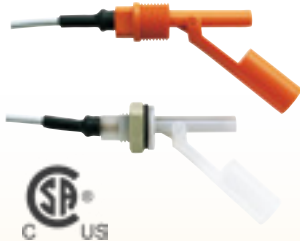
OEM Level Switches
Stainless Steel, Polypropylene,
PVDF



Specific Gravity_{min}: 0.55
 t_{\max} 250 °F; p_{\max} 425 PSIG
Connection: 1/2" NPT, 1/8" PF

NKP

Side-Mount Plastic Level Switch
Polypropylene, PVDF



Specific Gravity_{min}: 0.6
 t_{\max} 212 °F; p_{\max} 145 PSIG
Connection: 1/2" NPT, Bulkhead

RFS

Side-Mount Level Switch
Stainless Steel



ATEX

Specific Gravity_{min}: 0.7
 t_{\max} 248 °F; p_{\max} 72 PSIG
Connection: 1/2" NPT

NV

Side-Mount Level Switch
Brass, Stainless Steel



Specific Gravity_{min}: 0.63
 t_{\max} 230 °F; p_{\max} 230 PSIG
Connection: 3/4" NPT

NCM

Custom Mini Multipoint Switch
Brass, NBR, PP, Stainless Steel



Specific Gravity_{min}: 0.47...0.70
 t_{\max} 300 °F; p_{\max} 400 PSIG
Connection: 1/8"...1" NPT,
5/16 Tube End

NCG

Custom Multipoint Level Switch
PVC, Stainless Steel, NBR, PP



Specific Gravity_{min}: 0.55...0.85
 t_{\max} 300 °F; p_{\max} 400 PSIG
Connection: 1/2"...2" NPT,
3" ANSI Flange, 1/2" Tube End

NBA/NBE

Bypass Level Switch
Aluminum, Stainless Steel



Density: 0.65 kg/dm³
 t_{\max} 90 °C; p_{\max} 10 bar
Connection: G 3/8 Female, R 1/2 Male

NSP/NSM

Float Level Switch
Polyethylene, Polypropylene



Specific Gravity_{min}: 0.6
 t_{\max} 185 °F; p_{\max} 30 PSIG
Connection: Cable

NEC/NAB

Float Level Switch
Polypropylene, Hypalon®



Specific Gravity_{min}: 0.7
 t_{\max} 194 °F; p_{\max} 58 PSIG
Connection: Cable



NST

Float Level Switch PTFE



Specific Gravity_{min}: 0.79
t_{max} 302 °F; p_{max} 15 PSIG
Connection: Cable

NSE

Float Level Switch Stainless Steel



Specific Gravity_{min}: 0.8
t_{max} 302 °F; p_{max} 220 PSIG
Connection: 1/2" NPT

NGS

Heavy Duty Level Switch Stainless Steel



Specific Gravity_{min}: 0.7
t_{max} 480 °F; p_{max} 360 PSIG
Connection: 2" NPT,
Square Flange, DIN-Flange

NEK/NEL/NES

Conductive Level Switch Fitting: SS, Polypropylene, PTFE Electrode: SS, Hastelloy®, Titanium Electrode Coating: Polyolefin, PTFE



t_{max} 300 °F; p_{max} 440 PSIG
Connection: 1/2" NPT, 1-1/2" NPT
Up to Six Switch Points

NEH

Cable-Suspended Conductive Level Switch

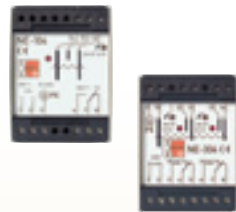
Fitting: Polypropylene, PTFE
Electrode: SS, Hastelloy®, Titanium
Electrode Coating: Neoprene, PVC



t_{max} 300 °F; p_{max} 90 PSIG
Connection: 1/2" NPT, 1-1/2" NPT
Up to Six Switch Points

NE-104/-304

Power Supply Relays for Conductive Switches



1 or 2 Limit Contacts or
1 or 2 Min/Max Control Switches
Switch Capacity: Max. 250 V_{AC},
5 A, 600 VA

NEK

Compact Conductive Level Switch Polypropylene, PPS



Conductivity_{min}: 100 µS/cm
t_{max} 185 °F; p_{max} 290 PSIG
Connection: 3/4" NPT, R 3/4
Open-Collector or Relay

LNK/LNR

Conductive Switch with Head Mounted Transmitter Stainless Steel, PEEK



Conductivity_{min}: 10 µS/cm
t_{max} 212/176 °F; p_{max} 145 PSIG
Connection: G 1/2, G 1, Tri-Clamp®
Open-Collector
Electrode Length: 1/8" to 59"

LNK-K

Compact Conductive Level Switch Stainless Steel, PEEK



Conductivity_{min}: 10 µS/cm
t_{max} 300 °F; p_{max} 145 PSIG
Connection: G 1/2, Tri-Clamp®

LNM

Microwave Level Switch Stainless Steel, PEEK



Dielectric Constant_{min}: 20
t_{max} 212 °F; p_{max} 145 PSIG
Connection: G 1/2, Tri-Clamp®
Open-Collector

LNZ

Capacitive Level Limit Switch Stainless Steel, PEEK



Dielectric Constant_{min}: 20
t_{max} 212 °F; p_{max} 145 PSIG
Connection: G 1/2, Tri-Clamp®
Open-Collector

NCW/NCW-H

Capacitive Level Switch Stainless Steel, PVDF



Dielectric Constant_{min}: 1.5
t_{max} 194/257 °F; p_{max} 145/435 PSIG
Connection: 1" NPT, G 1, G 2
Adapter: 2" NPT, G 1-1/4,
G 1-1/2, Weld-in Sleeve
Relay



Level

OPT

Optical Switch for Liquids
Stainless Steel, Polypropylene



t_{max} 176 °F; p_{max} 145 PSIG
Connection: 1/2" NPT,
G 1/2, M14 Bulkhead
Open-Collector

TED

Optical Level Switch for Liquids
Polysulfone, PFA



t_{max} 230 °F; p_{max} 200 PSIG
Connection: 3/8" NPT, 1/2" NPT

NSD

Economical Optical Level Switch
Stainless Steel, Polysulfone



t_{range} 15...250 °F;
 p_{max} 140/550 PSIG
Connection: 3/8" NPT

NK-8000

Ultrasonic Level Switch
Stainless Steel



t_{max} 176/212 °F; p_{max} 1,000 PSIG
Connection: 3/4" NPT

NWP

Plastic Vibrating Fork Level Switch for Liquids
Glass Filled PPS



t_{range} -40...176 °F; p_{max} 150 PSIG
Connection: 3/4" NPT
Relay Output

NWS

Vibration Level Switch
Stainless Steel



t_{max} 265 °F; p_{max} 650 PSIG
Viscosity $_{max}$: 5,000 cSt
Connection: 3/4" NPT, 1" NPT,
2" Tri-Clamp®, 1" or 2" ANSI Flanges

NDT

Static Pressure Level Switch
Polyamide, NBR



t_{range} 15...185 °F; p_{max} Atmospheric
Switchpoint: 4" Above End of Pipe
Connection: Hose Clamp for
1" Sch 40 Pipe

NSV

Vibrating Level Switch for Bulk Media
Stainless Steel



Switching Range: 9" ... 118"
Minimum Media Density: 3.75 lb/ft³
 t_{max} 176 °F; p_{max} Atmospheric
Connection: 1-1/2" NPT, G 1-1/2
1 Relay, SPDT

NVI

Vibrating Level Switch for Bulk Media
Stainless Steel



Switching Range: 8.15"
and Special Lengths
Minimum Media Density: 3.1 lb/ft³
 t_{max} 320 °F; p_{max} 360 PSIG
Connection: 1-1/2" NPT, G 1-1/2

NMF

Level Switch for Dry Bulk Media
Neoprene, FKM, Stainless Steel



t_{max} 390 °F
Minimum Media Density: 3.2 lb/ft³
 p_{max} 14.5 PSI (Over-pressure Protected)
Connection: Flange

PLS

Pendulum Level Switch for Bulk Media
Aluminum, EPDM



Length $_{max}$: 78.7"
 t_{max} 176 °F; p_{max} 7 PSIG
Connection: Aluminum Flange
Contact: SPDT Microswitch 250 V_{AC}/3A

NIR-9

Rotating Vane Level Switch for Bulk Media
Stainless Steel



Switching Range: 2.5" ... 390"
 t_{max} 392 °F; p_{max} 7.25 PSI
Connection: 1" NPT, 1-1/2" NPT, Others
Output: 1 Relay, SPDT



NSC

Capacitive Level Switch for Bulk Media

Stainless Steel, Polypropylene



ATEX

Dielectric Constant_{min}: 1.5
Switching Range: 10"...49 ft
t_{range} -4...176 °F; p_{max} 7 PSIG
Connection: 1" NPT, 2" NPT, G 1
Adapter: G 1-1/4,
G 1-1/2, Round Flange

NGM

Guided Wave Radar Level Transmitter

Stainless Steel, PTFE



ATEX

t_{max} 480 °F; p_{max} 580 PSIG
Connection: Thread, Flange
Rigid Probe, Concentric Probe, Cable
Analog Output and Switching Output
Accuracy: ±3 mm of Measured Value

NGR

Guided Wave Radar Transmitter

Stainless Steel



Measuring Range: 4"...78"
t_{max} 212 °F; p_{max} 145 PSIG
Connection: 3/4" NPT, G 3/4 Male
Analog Output, Switching Outputs
Sensor Accuracy: ±0.2

MM

Reed Chain Level Sensor

Stainless Steel, PVC, PP, PVDF



Max. Measuring Length: 19.6 ft
Density: 0.4 kg/dm³
t_{max} 265 °F; p_{max} 435 PSI
Connection: 3/8" ... 2" NPT,
1-1/2" ... 4" ANSI
Accuracy: ± 0.5% for L < 6.2 Feet

NML-308

Liquid Level Transducer

Polyethylene, PVC, PP, PTFE



Specific Gravity_{min}: 0.9
Length_{max}: 6"...48"
t_{max} 250 °F; p_{max} 25 PSIG
Connection: 1-1/4" NPT or 1-1/2" NPT

NML-310

Liquid Level Transducer

Polyethylene, PVC, PP, PTFE



Specific Gravity_{min}: 0.8
Length_{max}: 12"...108"
t_{max} 250 °F; p_{max} 40 PSIG
Connection: 2" NPT, 2" ... 4" ANSI

NMT

Magnetostrictive Level Transmitter

Stainless Steel



Specific Gravity_{min}: 0.7...1.0
Measuring Range: 12"...157"
t_{range} -4...158 °F; p_{max} 145 PSIG
Connection: 2" NPT, G 2
Output: Analog 4-20 mA, 4-wire

NMC

Capacitive Level Transmitter

Stainless Steel, PVDF



Measuring Range: 11"...157"
Dielectric Constant_{min}: 1.5
t_{max} 257 °F; p_{max} 435 PSIG
Connection: 1" NPT, 2" NPT, G 1, G 2
Adapter: G 1-1/4, G 1-1/2,
Weld-in Sleeve
Output: Analog 4-20 mA, 2 Wire

NRF

Capacitive Level and Temperature Transmitter

Stainless Steel, PTFE



Rigid Probe and
Suspended Cable Designs
Length_{max}: 200 ft.
t_{range} -100...350 °F; p_{max} 500 PSIG
Connection: 3/4" NPT,
1-1/2" NPT, 1-1/2" ... 2" Tri-Clamp®

NRF-1F

Capacitive Level Transmitter - with Integrated Concentric Grounding Probe

Stainless Steel, PTFE



Max. Length: 10 ft
t_{max} 350 °F; p_{max} 14.5...100 PSIG
Connection: 3/4" or 1-1/2" NPT
Output: 4-20 mA
Accuracy: ± 1% of Span

NRF-2/-3

Capacitive Level and Temperature Transmitter

Stainless Steel, PTFE

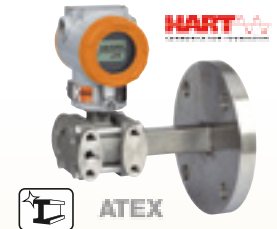


Measuring Length_{max}: 12 ft
t_{range} -100...350 °F p_{max} 100 PSIG
Connection: 3/4" NPT,
1-1/2" ... 3" Tri-Clamp®
Output: 4-20 mA, RTD

PAD-N

Differential Pressure Transmitter with Diaphragm Seal

Stainless Steel, Monel®, Tantalum, Hastelloy®, PTFE



Level: 0...2,500 mmWC to 0...150 mWC
t_{max} 200 °C
Connection: Flange via Neck Tube
DN 50 or Bigger
Accuracy: ±0.075% of Calibrated Span
+ Influence of Diaphragm Seal



Level

SZM

Bypass Level Indicator Stainless Steel



Measuring Length_{range}: 15" ... 121"
 t_{max} 212 °F; p_{max} 145 PSIG
 Connection: 1/2" NPT,
 ANSI 1/2" ... 2"

NZJ

Micro Bypass Level Indicator with Switch Options Aluminum, Stainless Steel



Installation Length: 4" ... 22"
 t_{max} 210 °F; p_{max} 230 PSIG
 Connection: 1/4" NPT
 Up to Two Limit Contacts Available

NBK-M

Economical Mini Bypass Level Indicator Stainless Steel



Measuring Length_{range}: 8" ... 9.8 ft
 Specific Gravity: 1.0 or 0.8
 Viscosity_{max}: 200 cP
 t_{max} 390 °F; p_{max} 580 PSIG
 Connection: 1/2" ... 1" NPT,
 1/2" ... 1" ANSI Flange

NBK-03 TO -33

Bypass Level Indicator Stainless Steel



Measuring Length_{range}:
 1 ft ... 18 ft (or longer)
 Specific Gravity_{min}: 0.54
 Viscosity_{max}: 200 cP
 t_{max} 750 °F; p_{max} 4,600 PSIG
 Connection: 1/2" ... 1-1/4" NPT,
 1/2" ... 2" ANSI Flange

NBK-04

Tank-Top Mounted Level Indicator Stainless Steel



Measuring Length_{range}: 1 ft ... 13 ft
 Specific Gravity_{min}: 0.55
 Viscosity_{max}: 200 cP
 t_{max} 250 °F; p_{max} 230 PSIG
 Connection: 2" or 2-1/2" ANSI Flange

NBK-16/-17

Plastic Bypass Level Indicator Polypropylene, PVDF



Measuring Length_{range}: 8" ... 13 ft
 Specific Gravity_{min}: 0.59
 Viscosity_{max}: 200 cP
 t_{max} 176 °F; p_{max} 58 PSIG
 Connection: 3/4" ... 2" ANSI Flange

BA

Displacer-Type Level Gauge Stainless Steel, Hastelloy®



Measuring Length_{range}: 1 ... 19.7 ft
 Specific Gravity_{min}: 0.4 ... 2.0
 t_{range} -40 ... 480 °F; p_{max} 580 PSIG
 Connection: 2 ... 4" ANSI Flange

NUS-4

Ultrasonic Level Transmitter PP, PVDF



Measuring Range: 7.87" ... 82' (Liquids)
 7.87" ... 32' (Bulk Media)
 t_{max} 190 °F; p_{max} 43.5 PSIG
 Connection:
 1-1/2", 2" NPT;
 3", 5", or 6" ANSI Flange

NUS-7

Ultrasonic Level Transmitter PP, PVDF



Measuring Range: Liquids up to 20 ft
 t_{max} 176 °F; p_{max} 40 PSIG
 Connection: 2" NPT, G 2
 Analog Output
 Accuracy: $\pm 0.2\%$ of Reading
 $\pm 0.05\%$ of Full Scale

NEO

Ultrasonic Level Transmitter PVDF, 2-wire or 3-wire



Measuring Length_{range}: 6" ... 24.5 ft
 t_{range} -40 ... 140 °F; p_{max} 30 PSIG
 Connection: 2" NPT
 Optional Relay

KPW

Submersible Pressure Transducer Stainless Steel



Measuring Depth_{max}: 50" WC
 to 1,000 PSI
 t_{range} 14 ... 122 °F
 Proof Pressure: 2x Depth Range

NTB

Deep Well Level Probe Stainless Steel



Measuring Range: 0 ... 200 m (WC)
 t_{range} 14 ... 140 °F



MAN-R

Bourdon Tube Pressure Gauges Brass



Measuring Range:
-30"...0" Hg to 0...14,500 PSIG
Housing Ø: 63, 80, 100, 160 mm
Overload Protection: 1.15 - 1.3 Times
Connection: 1/4" NPT, 1/2" NPT
Accuracy: $\pm 1.0\%$ or $\pm 1.6\%$ of Full Scale

MAN-R

Bourdon Tube Pressure Gauges Stainless Steel



Measuring Range:
-30"...0" Hg to 0...14,500 PSIG
Housing Ø: 63, 80, 100, 160 mm
Overload Protection: 1.15 - 1.3 Times
Connection: 1/4" NPT, 1/2" NPT
Accuracy: $\pm 1.0\%$ or $\pm 1.6\%$ of Full Scale

MAN-N...S

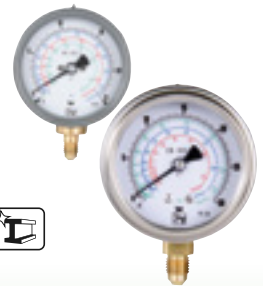
Bourdon Tube Pressure Gauges



Measuring Range:
-30"...0" Hg to 0...30,000 PSIG
Housing Ø: 63, 100, 150 mm
Overload Protection: 1.15 - 1.25 Times
Connection: 1/4" NPT, 1/2" NPT
Accuracy: $\pm 1.0\%$ or $\pm 1.6\%$ of Full Scale

MAN-T

Bourdon Tube Pressure Gauges for Refrigeration Brass, Stainless Steel



Measuring Range: -1...9 to -1...40 bar
Housing Ø: 63, 100, 160 mm
Overload Protection: 1.0 Times
Connection: 7/16-20 UNF, G 1/4
Accuracy: $\pm 1.0\%$ or $\pm 1.6\%$ of Full Scale

MAN-K

Capsule Element Pressure Gauge Brass, Stainless Steel



Measuring Range: -10...0 to 0...600 mbar
Housing Ø: 63, 80, 100, 160 mm
Overload Protection: 1.3 - 10 Times
Connection: G 1/4, G 1/2
Accuracy: $\pm 1.6\%$ of Full Scale

MAN-P

Diaphragm Pressure Gauge Stainless Steel



Measuring Range: -16...0 to 0...40 bar
Housing Ø: 100, 160 mm
Overload Protection: 1.15 - 1.3 Times
Connection: 1/2" NPT
Optional: Contact
Accuracy: $\pm 1.6\%$ of Full Scale

MAN-ZF

Pressure Gauge with Transducer Stainless Steel



Measuring Range:
-30"...0" Hg to 0...8,700 PSIG
Housing Ø: 100 mm
Overload Protection: 0.9 - 1.0 Times
Connection: 1/2" NPT
2-wire, 4-20 mA Output
Accuracy: $\pm 1.0\%$ of Full Scale

DSD

LCD Pressure Gauge with Ceramic Sensing Element Battery Powered Stainless Steel/PA Fiberglass Reinforced



Measuring Range:
-30"...0" Hg to 0...20,000 PSIG
Housing Ø: 80 mm
Overload Protection: 1.3 - 3 Times
Connection: 1/4" NPT, 1/2" NPT
Accuracy: $\pm 0.5\%$ of Full Scale

MAN-LD

LCD Pressure Gauge with Ceramic Sensing Element Externally Powered Stainless Steel/PA Fiberglass Reinforced



Measuring Range:
-30"...0" Hg to 0...23,000 PSIG
Housing Ø: 74 mm
Overload Protection: 1.3 - 3 Times
Connection: 1/4" NPT, 1/2" NPT
Accuracy: $\pm 0.5\%$ of Full Scale

MAN-F

Test Pressure Gauge with Bourdon Tube Aluminum



Measuring Range:
-8.5"...0" Hg to 0...8,700 PSIG
Housing Ø: 160, 250 mm
Overload Protection: 0.9 - 1.3 Times
Connection: 1/2" NPT
Accuracy: $\pm 0.25\%$ or $\pm 0.6\%$ of Full Scale

PDC

LCD Pressure Gauge with Ceramic or Thin Film Sensing Element - Battery Powered Stainless Steel



Measuring Range:
0...30 PSIG to 0...10,000 PSIG
Housing Ø: 80 mm
Overload Protection:
2 Times or 14,500 PSIG Max.
Connection: 1/4" NPT
Accuracy: $\pm 0.5\%$ of Full Scale ± 1 Digit

MAN-U

Differential Pressure Gauge with Double Diaphragm Stainless Steel



Measuring Range:
0...100 mbar to 0...25 bar
Static Pressure on Both Sides: 200 bar
Housing Ø: 100 or 150 mm
Connection: 1/4" NPT, 1/2" NPT
Accuracy: Cl. 1.6



Pressure

DSF26

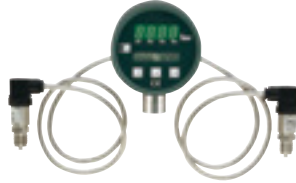
LED Pressure Gauge with Ceramic Sensing Element
Stainless Steel/PA Fiberglass Reinforced



Measuring Range:
-14.7...5,800 PSIG
Housing Ø: 100 mm
Overload Protection: 1.5 - 2 Times
Connection: 1/4"...3/4" NPT
4-20 mA and Relay Contacts
Accuracy: $\pm 0.5\%$ of Full Scale ± 1 Digit

MAN-BF20

LED Differential Pressure Gauge with Ceramic Sensing Element
Stainless Steel/PA Fiberglass Reinforced



Measuring Range:
-30"...0" Hg to 0...23,000 PSID
Housing Ø: 100 mm
Overload Protection: 2 Times
Connection: 1/2" NPT
4-20 mA and Relay Contacts
Accuracy: $\pm 0.5\%$ of Full Scale

MAN-BF26

LED Differential Pressure Gauge with Ceramic Sensing Element
Stainless Steel/PA Fiberglass Reinforced



Measuring Range:
-30"...0" Hg to 0...23,000 PSID
Housing Ø: 100 mm
Overload Protection: 2 Times
Connection: 1/4" NPT, 1/2" NPT
4-20 mA and Relay Contacts
Accuracy: $\pm 0.5\%$ of Full Scale

MAN-DG12R

Differential Pressure Gauge with Bourdon Tube
Aluminum, Steel



Measuring Range:
0...15 PSID to 0...870 PSID
Housing Ø: 160 mm
Connection: on Request
Optional: Contacts
Accuracy: $\pm 1.6\%$ of Full Scale

DRM

Diaphragm, Capsule, and In-Line Diaphragm Seals for Pressure Gauges and Transmitters

Stainless Steel, Special Materials upon Request



Measuring Range:
-30"...0" Hg to 0...23,000 PSIG
Fill Liquids: Glycerine, Paraffin, or Silicone
Connection: NPT, BSP, ANSI, Tri-Clamp®, or Other Sanitary Connections

DRM

Flange Diaphragm Seals
Stainless Steel, Monel®, Tantalum, Hastelloy®, PTFE



Standard Version up to 350°C/40 bar:
ANSI 1"...4", DN 25...DN 100
Special Version up to 400 bar:
ANSI 8", up to DN 200
Flanges According to BS, JIS, and GOST Standards
Optional: Extended Diaphragm

DRM 626/627

Membrane Diaphragm Seals
Stainless Steel, Tantalum, ECTFE

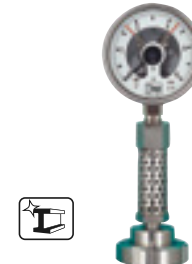


Measuring Range: 0...0.6 to 0...250 bar
Housing Ø: 90 mm
Filling: Glycerine, Paraffin, Silicone Oil
Membrane Option: Tantalum, ECTFE

MAN/MZB/DRM

Pressure Gauge with Sanitary Diaphragm Seal and Cooling Element

Stainless Steel



MAN-RF...MZB-711...DRM-602
Meas. Range: 0...15 to 0...580 PSIG
Housing Ø: 100 mm
Connection: Tri-Clamp®, DIN 11851, Hygienic Connection, IDF, SMS
Accuracy: $\pm 1.6\%$ of Full Scale

MAN/DRM

Pressure Gauge with Tri-Clamp® Diaphragm Seal
Stainless Steel



MAN-RF...DRM-613
Meas. Range: 0...15 to 0...145 PSIG
Housing Ø: 100 mm
Connection: 1"...3" Tri-Clamp®
Accuracy: $\pm 1.6\%$ of Full Scale

MAN/DRM

Pressure Gauge with Membrane Diaphragm Seal
Stainless Steel



MAN-RF...M1...DRM-620
Meas. Range: 0...1 to 0...40 bar
Housing Ø: 100 mm, 160 mm
Connections: Diverse Thread and Flange Options, Tri-Clamp®, DIN 11851, SMS and IDF Norm
Accuracy: $\pm 1.6\%$ of Full Scale

MAN/DRM

Pressure Gauge with Inline Diaphragm Seal
Stainless Steel



MAN-RF...DRM-502
Meas. Range: 1.6...40 to 2.5...40 bar
Housing Ø: 100 mm, 160 mm
Connection: 1/2"...2" Tri-Clamp®, Hygienic ISO DN 15...50
Accuracy: $\pm 1.6\%$ of Full Scale

MAN/DRM

Pressure Gauge with Membrane Diaphragm Seal
Stainless Steel



MAN-RF...DRM-603
Meas. Range: 0...1 to 0...40 bar
Housing Ø: 100 mm
Connection: DIN 11851 DN 25...100
Accuracy: $\pm 1.6\%$ of Full Scale



MAN/DRM

All Stainless Steel Bourdon Tube Pressure Gauge with Membrane Diaphragm
Stainless Steel



MAN-RD...DRM-600
Meas. Range: 0...85 to 0...14,500 PSIG
Housing Ø: 63 mm
Connection: 1/2"...1-1/4" NPT
Accuracy: $\pm 1.6\%$ of Full Scale

MAN/DRM

Pressure Gauge with Membrane Diaphragm Seal - Plastic
PVDF



MAN-RD...DRM-632
Meas. Range: 0...20 to 0...230 PSIG
Housing Ø: 63 mm
Connection: 1/2" NPT
Accuracy: $\pm 1.6\%$ of Full Scale

DSD/SEN/DRM

Pressure Gauge or Sensor with Membrane Diaphragm Seal
PVC or Polypropylene



DSD...DRM-630 and SEN...DRM-631
Meas. Range: 0...20 to 0...145 PSIG
Housing Ø: 74 mm
Connection: 1/2" NPT
Accuracy: $\pm 1.0\%$ of Full Scale

SEN/DRM-600

Pressure Sensor with Diaphragm Seal
Stainless Steel



Measuring Range: 0...6 to 0...600 bar
 t_{max} 70 °C
Connection: G 1/2"...G 1-1/2" (SS)
Optional AUF Plug-on Display
Accuracy: $\pm 1.0\%$ of Full Scale

PUM

U-Pipe Pressure Indicator
Glass



Indicating Ranges:
250 up to 1500 mm WC or
10" up to 60" WC
Scale Division: 2 mm
Hose Connection Ø: 7 mm

MZB

Pressure Sensing Accessories
Brass, Steel, Stainless Steel



Block and Bleed Valves, Gauge Swivels,
Snubbers, Cooling Elements,
and Steam Siphons

MZB-712

Pressure Sensing Accessories
Stainless Steel



Fittings: 1/4", 3/8", or 1/2" NPT;
G 1/4"...G 1/2, 7/16-20 UNF DIN 3866,
G 1/2 DIN 3852-E, M 20x1.5

PMP

Differential Pressure Sensor and Controller for Filters



Measuring Range: 0...20" H₂O
Power Supply: 24 V_{AC/DC},
110 V_{AC}, 230 V_{AC}
Display: 4-Digit LED
Connection: 1/4" NPT or 6x8 mm Tube
Accuracy: $\pm 1.0\%$ of Full Scale

PAD

Differential Pressure Transmitter
Stainless Steel



Measuring Range:
0.3"...6" WC to 60...6,000 PSIG
Power Supply: 18-45 V_{DC}
Connection: 1/4" NPT, 1/2" NPT
Accuracy: $\pm 0.075\%$ of Full Scale

PAD-N

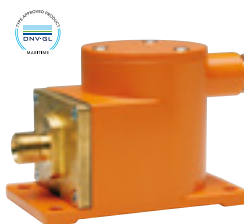
Differential Pressure Transmitter with Diaphragm Seal
Stainless Steel, Monel®, Tantalum,
Hastelloy®, PTFE



Measuring Range:
0 ... 250 mbar to 0 ... 206.80 bar
 t_{max} 200 °C
Connection: Flange, Threaded,
Clamp-on, and In-line Diaphragm Seal
(Nominal Size 15 ... 100)
Accuracy: $\pm 0.075\%$ of Calibrated
Span + Influence of Diaphragm Seal

PNK

Pressure Transmitter for High Vibration
Brass



Measuring Range:
-30...0" Hg to 0...1,450 PSIG
Overload Protection: 1.6 Times
Connection: M16 x 1.5
(NPT with Adapter)
Accuracy: $\pm 1.0\%$ of Full Scale

PDA

Pressure Transmitter with Ceramic Sensing Element
Stainless Steel



Measuring Range:
-30...0" Hg to 0...5,800 PSIG
Display: 3-Digit LED
Power Supply: 24 V_{DC}
Connection: 1/4" NPT, 1/2" NPT
Accuracy: $\pm 0.5\%$ - 1.0% of Full Scale



Pressure

HND-P105/-210

Hand-Held Pressure Indicator for External Sensors



Measuring Range:
-14.5...40 PSIG to 0...5,800 PSIG
(Dependent on Associated Sensor)
Optional: Data Log, Alarm,
Control Functions
Accuracy: $\pm 0.1\%$ of Full Scale

HND-P121/-123

Hand-Held Differential Pressure Indicator with 2 Integrated Sensors



Measuring Range: -0.0145...0.36 PSID
to -1.45...29 PSID
Optional: Data Log, Alarm, Control
Functions
Accuracy: $\pm 0.2\%$ - 0.4% of Full Scale

HND-P129/-239

Hand-Held Differential Pressure Indicator with 1 Integrated Sensor



Measuring Range: 0...15 PSIG
Optional: Data Log, Alarm,
Control Functions
Accuracy: $\pm 0.2\%$ of Full Scale

KPG

Pressure Transmitter with Thin Film Sensing Element Stainless Steel



Measuring Range:
-30"...0" Hg to 0...145,000 PSIG
Overload Protection: 1.2 - 3 Times
Connection: 1/4" NPT, 1/2" NPT
Accuracy: $\pm 0.125\%$ - 0.25%
of Full Scale

KPK

Pressure Transmitter with Thin Film Sensing Element Stainless Steel



Measuring Range:
-30"...0" Hg to 0...15,000 PSIG
Overload Protection: 1.5 - 2 Times
Connection: 1/4" NPT
Accuracy: $\pm 0.25\%$ - 0.5% of Full Scale

KPA

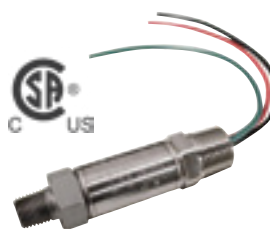
OEM Pressure Transmitter with Heat-Fused Sensing Element Stainless Steel



Measuring Range:
0...50 PSIG to 0...10,000 PSIG
Overload Protection: 2 Times
Connection: 1/4" NPT
Accuracy: $\pm 0.25\%$ of Full Scale

KP46

Explosion Proof Pressure Transmitter CSA/US Approved Stainless Steel



Measuring Range:
0...50 PSIG to 0...20,000 PSIG
Overload Protection: 2 Times
Connection: 1/4" NPT, 1/2" NPT
Accuracy: $\pm 0.25\%$ BFSL

SEN-86/-87

Pressure Transmitter with Ceramic Element Stainless Steel



Measuring Range:
-30"...0" Hg to 0...10,000 PSIG
Optional AUF Display: 4-Digit LED
Overload Protection: 1.5 - 2 Times
Connection: 1/2" NPT, 1/4" NPT
Accuracy: $\pm 0.5\%$ - 1.0% of Full Scale

SEN-96

Pressure Sensor with Ceramic Element Stainless Steel



Measuring Range:
-30"...0" Hg to 0...6,000 PSIG
Output: 4-20 mA, 0-5 V_{DC}, 0-10 V_{DC}
Connection: 1/4" NPT, 1/2" NPT,
G 1/4, G 1/2
Accuracy: $\pm 0.5\%$ - 0.75% of Full Scale

SEN-98/-99

Pressure Sensor with Ceramic Element Stainless Steel



Measuring Range:
-30"...0" Hg to 0...8,700 PSIG,
0...14.5 to 0...360 PSIA
Overload Protection: 1.3 - 5 Times
Connection:
1/4" NPT, 1/2" NPT, G 1/4, G 1/2
Accuracy: $\pm 0.25\%$ of Span

AUF

Compact In-line Display for Transmitters



For Transmitters with DIN 43650A Plugs
Input: 4-20 mA, 2-wire or 3-wire
User Programmable
Optional Transistor Switch
Custom Housing Colors
for OEM Quantities

PAS

Pressure Transmitter High Accuracy Stainless Steel



Measuring Range:
-14.5...21.7 to 0...8,700 PSIG
Power Supply: 12 - 45 V_{DC}
Connection: 1/2" NPT
Accuracy: $\pm 0.075\%$ of Full Scale



PAS-N

Pressure Transmitter with Diaphragm Seal

Stainless Steel, Monel®, Tantalum, Hastelloy®, PTFE



Measuring Range:

0...250 mbar to 0...600 bar
 t_{max} 350 °C

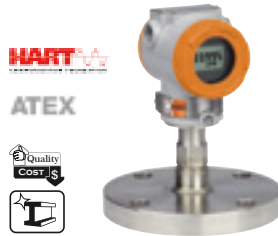
Connection: Thread or Flange
 (Nominal Size 15...100)

Accuracy: $\pm 0.075\%$ of Calibrated Span
 + Influence of Diaphragm Seal

PAS-N

Pressure Transmitter with Diaphragm Seal

Stainless Steel, Monel®, Tantalum, Hastelloy®, PTFE



Measuring Range:

0...250 mbar to 0...600 bar
 t_{max} 350 °C

Connection: Thread or Flange
 (Nominal Size 15...100)

Accuracy: $\pm 0.075\%$ of Calibrated Span
 + Influence of Diaphragm Seal

PSD

Electronic Pressure Transmitter/Switch

Stainless Steel

NEW



Range: 0...30 to 0...7,500 PSI

Output: 4-20 mA or 0-10 V_{DC}

Output: 2x PNP Switches

Display: 4-Digit LED

Connection: 1/4" NPT

Accuracy: $\pm 0.5\%$ of Full Scale

PDD

Pressure Transmitter with Ceramic Sensing Element

Stainless Steel



Measuring Range:

-30"...0" Hg to 0...5,800 PSIG

Display: 3-Digit LED

Power Supply: 24 V_{DC}

Connection: 1/4" NPT, 1/2" NPT

Accuracy: $\pm 0.5\%$ - 1.0% of Full Scale

KRT

Pressure Switch - Heavy Duty Bellows Type

Brass



Switching Range:

-14.5...0 PSIG to 135...435 PSIG

Overpressure: 1.5 - 5 Times

Repeatability: $\pm 0.25\%$ of Full Scale

KAS/KPS

Pressure Switch - Heavy Duty Bellows Type

Brass



Switching Range:

0...2.5 PSIG to 6...60 bar

Overpressure: 5 - 10 Times

Connection: 1/4" NPT

Repeatability: $\pm 0.25\%$ of Full Scale

KPH

Pressure Switch - Industrial Diaphragm/Piston Type

Aluminum



Switching Range:

-14.5...0 PSIG to 580...6,100 PSIG

Overpressure: 1.4 - 5 Times

Connection: 1/4" NPT

Repeatability: $\pm 3 - 4\%$ of Full Scale

KPH300

Pressure Switch - OEM Diaphragm Type

Zinc-Plated Steel



Switching Range:

3...30 PSIG to 450...4,600 PSIG

Overpressure: 1.2 - 9 Times

Connection: 1/4" NPT

Repeatability: $\pm 2\%$ of Setpoint

KPF

Pressure Switch - OEM Diaphragm Type

Brass, Stainless Steel



Switching Range:

4.3...13 PSIG to 725...1,450 PSIG

Overpressure: 1,450 PSIG

Connection: 1/4" NPT

Repeatability: $\pm 5\%$ of Full Scale

SCH

Mechanical Pressure Switches

Copper, Brass, SS, NBR



For Overpressure, Vacuum Pressure and Differential Pressure

Ranges: -1...0.1 bar to -250...100 mbar,

1...16 mbar to 16...63 bar

Connection: NPT and G Threaded

SCH-27

Mechanical Pressure Switch

Stainless Steel



Switching Range:

0.7...6 mbar to 8...160 PSIG

Switching Function: Micro Switch

Connection: 1/2" NPT Female,

1/4" NPT Female,

1/2" NPT Male, G 1/2 Male

Repeatability: $< 1\%$ of Full Setting Value

SCH-28

Mechanical Differential Pressure Switch

Stainless Steel



Switching Range:

0.1...1 bar to 0.2...10 bar

Switching Function: Micro Switch

Connection: 1/2" NPT Female,

1/4" NPT Female,

1/2" NPT Male, G 1/2 Male

Repeatability: $< 1\%$ of Full Setting Value



Temperature

TWR

Temperature Switch for Liquids
Brass, Stainless Steel



Switching Range: 86...248 °F
 t_{max} 250 °F; p_{max} 920 PSIG
Connection: 3/4" NPT

TRS

Thermal Reed Temperature Switch
Brass, Stainless Steel



Switching Range: 50...248 °F
 t_{range} -40...250 °F; p_{max} 360 PSIG
Connection: 1/4"...1" NPT

TDD

Digital Temperature Switch
Stainless Steel



Switching Range: -58...250 °F
 t_{max} 250 °F; p_{max} 1,150 PSIG
Connection: 1/2" NPT, 3/4" NPT,
G 1/2, G 3/4, M25x1.5
2 Transistor Switches

TDD...D6

Digital Temperature Switch
Stainless Steel



Switching Range: -58...250 °F
 t_{max} 250 °F; p_{max} 1,150 PSIG
Connection: 6 mm dia. Smooth Probe
2 Transistor Switches

DTS

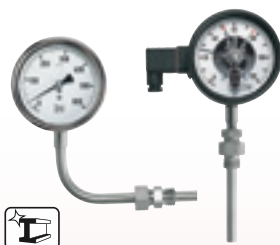
Temperature Switch
Brass



Measuring Range: -10...200 °C
Connection: 1/2" NPT

TNS

Gas Filled Rigid Stem Thermometer
Stainless Steel



Measuring Range: -40...1,100 °F
 p_{max} 350 PSIG
Connection: 1/2"...1" NPT, G 1/2...G 1
Switch Options: Magnetic, Sliding,
Inductive, or Pneumatic

TNF

Gas Filled Capillary Thermometer
Stainless Steel



Measuring Range: -40...1,100 °F
 p_{max} 350 PSIG
Connection: 1/2"...1" NPT, G 1/2...G 1
Switch Options: Magnetic, Sliding,
Inductive, or Pneumatic

DTM

Digital Temperature Indicator/Transmitter
Stainless Steel



Measuring Range: -30...750 °F
 p_{max} 350 PSIG
Connection: 1/2"...1" NPT, G 1/2...G 1
Analog Output, Limit Switches

TSH

Thermowells for Stem and Capillary Thermometers
Stainless Steel



p_{max} 360 PSIG
Connection: 1/2"...1" NPT, Weld Stub

TDA

Digital Temperature Sensor
Stainless Steel



Measuring Range: -58...250 °F
 p_{max} 1,150 PSIG
Connection: 1/2" NPT, 3/4" NPT,
G 1/2, G 3/4
Output: 4-20 mA, 3-wire,
Transistor Switch

TDA...D6

Digital Temperature Sensor
Stainless Steel



Measuring Range: -58...250 °F
 p_{max} 1,150 PSIG
Connection: 6 mm dia. Smooth Probe
Output: 4-20 mA, 3-wire,
Transistor Switch

TNK

RTD Temperature Sensors
Brass, Bronze, Stainless Steel



Measuring Range: -112...302 °F
 t_{max} 302 °F; p_{max} 725 PSIG
Connection: 1/2" NPT, G 1/2, M18x1.5

Temperature



TSP

Temperature Sensor for Pipes

Brass, Stainless Steel



Measuring Range: -40...300 °F
 p_{max} 750 PSIG
 Connection: 1/4"...1-1/2" NPT
 Output: 4-20 mA, Pt100 RTD

TSR

RTD Temperature Probes

Stainless Steel



Measuring Range: -320...400 °F
 p_{max} 1,450 PSIG
 Connection: 1/2" or 3/4" NPT,
 1-1/2" Tri-Clamp®
 Output: 4-20 mA, Pt 100 RTD

TST

Integrated Programmable Temperature Transmitter

Stainless Steel



Measuring Range: -58...1,100 °F
 p_{max} 1,500 PSIG
 Connection: 1/4" or 1/2" NPT,
 1-1/2"...3" Tri-Clamp®
 Output: 4-20 mA, 2-wire

TSA

Resistive Temperature Sensor

Brass, Stainless Steel



Measuring Range: -40...150 °C
 p_{max} 25 bar
 Connections: 1/4"...1-1/2" NPT,
 G 1/4"...1-1/2"

TGK/TGL

Glass Thermometer

Aluminum or Plastic Casing, Brass



Measuring Range: -76...390 °F
 Connection: 1/2" NPT, G 1/2
 Accuracy: $\pm 1\%$ of Full Scale

DTB

Digital Thermometer - High Accuracy, Battery Powered

Stainless Steel



Measuring Range: -50...400 °F
 (-50...200 °C)
 Display in Either °F or °C
 Connection: 1/4" ... 3/4" NPT
 Battery Life: up to 5 Years

TIR-FA

Stationary Infrared Thermometer

Stainless Steel



Measuring Range:
 0...120 °C to 100...500 °C
 10 mV/K or Voltage Model J, K
 Accuracy:
 $\pm 1.5\%$ of Measuring Range or 2.5 °C

TIR-SN/-FS/-FG

Stationary Infrared Thermometer

Stainless Steel



Measuring Range:
 -20...300 °C to 1100...2,500 °C
 Analog Output
 Accuracy: $\pm 1.5\%$ of Measuring
 Range/°C
 0.8...1 % of Reading +1 °C

HND-T120/-125

Precision Hand-Held Thermometer



Measuring Range: -50...1,150 °C
 Sensor: Type K Thermocouple
 Power Supply: Battery or External
 Accuracy: 0.1% - 1.5% of Reading

HND-T110/-T115

Precision Hand-Held Thermometers



Measuring Range: -220...1,768 °C
 Sensor: Type K, N, S, J, T
 Thermocouples or Pt 100, 4-wire
 Power Supply: Battery or External
 Accuracy: $\pm 0.03\%$ of Full Scale

TWL-ST

Room Thermometer

Aluminum



ATEX HART

Measuring Range: -20...60 °C
 p_{max} Atmospheric
 Wall Socket
 Pt 100, 4-20 mA
 Accuracy: Cl. A or B

TBI

Bimetallic Thermometer

Stainless Steel



Measuring Range: -30...500 °C
 p_{max} 360 PSIG
 Installed in Thermowell
 Connection: G 1/2



Temperature

TBE

Bi-Metal Thermometer Stainless Steel



Measuring Ranges: -50...50 °C
to 0...600 °C
 p_{max} 15 bar
Fittings: 1/2" ... 3/4" NPT, G 1/2" ... G 3/4,"
(Fixed, Rotatable, Slidable)
Accuracy: Cl. 1.0

TND

Shaft Thermometer for Diesel Engines Steel, Stainless Steel



Measuring Range: 0...800 °C
 p_{max} 25 bar
Fittings: G 1/2, G 3/4
Accuracy: Cl. 1.0 or 1.6

ST

Mini Infrared Thermometers



Measuring Range: -76...1,400 °F
Laser Sighting: Single Point
and Dual Point
Power: 2 AAA Batteries
Accuracy: \pm 2% of Reading

TMA/MMA (AUF)

Temperature Transmitters Stainless Steel



Measuring Range: -358...1,112 °F
 p_{max} 1,450 PSIG
Connection: 1/4" NPT, 1/2" NPT
Output: 4-20 mA, 2-wire

MMA/AUF/KUG

Screw-in Resistance Thermometer Stainless Steel



Measuring Range: -200...400 °C
 p_{max} 36 bar
Accuracy: < 0.5% of Span

LTS

Resistance Temperature Probe



Measuring Range: -50...250 °C
 p_{max} 145 PSIG
Sensor: Pt100, 4-20 mA
Connection: G 1/2, M12x1.5

MWD

Industrial Resistance Thermometer Stainless Steel



Measuring Ranges:
from -324 up to 1112 °F
 p_{max} 435 PSI
Accuracy: Cl. A or B

DTE

Digital Thermometer Stainless Steel



Measuring Ranges: -200...850 °C
 p_{max} 34 bar
Display: 6-Digit LCD
Fittings: 1/4" ... 1/2" NPT,
G 1/4" ... G 1/2, Compression Fitting
Accuracy: \pm 0.1% of Reading + 0.2 °C

TWL/TTL

Resistance Thermometers Stainless Steel



Measuring Range: -200...1,100 °C
 p_{max} 3,625 PSIG
Sensor: Pt100, 4-20 mA
Connection: 1/2" ... 1" NPT,
G 1/2" ... 1, DIN 15 - 50 Flanges
Output: Analog 4-20 mA

TWM

Sheath Resistance Thermometer Stainless Steel



Measuring Range: -20...600 °C
Sensor: Pt100, 2-, 3-, or 4-wire
Connection: Cable, Connector,
Connection Head

TWA

Contact Resistance Thermometer Aluminum, Stainless Steel



Measuring Range: -20...260 °C
Accuracy: Pt 100, Class B

TWL

Thermowells for Thermometers Stainless Steel, Special Materials



t_{max} 800 °C
 p_{max} 250 bar
Types: Thread, Flange, Welding Sleeve

LCI

Inductive Conductivity Measuring System

PEEK, PVDF, Stainless Steel



Measuring Range: 0...2,000 mS/cm
 t_{max} 120 °C; p_{max} 10 bar
 Integrated Pt 100
 Accuracy: $\pm 1.0\%$ of Full Scale

ACS

Conductive/Inductive Conductivity Measuring Cells

Stainless Steel, PEEK



Measuring Range: 0.05 μ S/cm ... 1,000 mS/cm
 t_{max} 135 °C; p_{max} 16 bar
 Process Connection: 1/2" NPT, 1" NPT, G 1, G 3/4
 Accuracy: $\pm 0.5\%$ - 1.0% of Reading

APM-1/ACM-1

Transmitter for pH-Value, ORP, Conductivity



Outputs: 1 Binary Output, 2 Analog Outputs, Switch Output: 2 Relays with Adjustable Setpoints

HND-C/HND-R

Hand-Held Measuring Unit Conductivity, pH, Redox, Temperature



pH Measuring Range: 0...14
 Measuring Range: 0...200 μ S/cm to 0...200 mS/cm
 Redox: -1999...2,000 mV
 Temperature: -100...250 °C
 Accuracy: ± 0.01 pH; $\pm 0.1\%$ of Full Scale

APM-Z

pH-Value Transmitter



Measuring Range: pH -1 up to 14
 Display of pH-value and Temperature with LEDs, Analog Actual-value Output Scalable, 2 Relays for Control Functions, (PID) Programmable

APS

pH-Combined Electrodes

Glass, Plastic



Measuring Range: pH 0...14
 t_{max} 80 °C; p_{max} 10 bar
 Diaphragm: PTFE-ring or Ceramic

HND-F

Hand-Held Humidity Precision Measuring Unit



Range: 0...100% Weight Moisture
 Option: Logger, Alarm
 Accuracy: 0.1% - 0.2% of Reading

AFK-E

Humidity/Temperature Transmitter



Measuring Range: 0...100% rH; -40...180 °C
 t_{max} 180 °C; p_{max} 15 bar
 Outputs: Analog Outputs and Switches

AFA-G AND AUF

Humidity Transmitter with Display



Measuring Range: 0...100% rH; 0...60 °C
 t_{max} 60 °C
 Outputs: 4-20 mA
 Accuracy: $\pm 2\%$ rH

AFS

Hygostat, Humidity Annex Switch



Measuring Range: 35...100% rH
 t_{max} 60 °C
 Switch Output: 1 SPDT
 Accuracy: 3% rH

AFK

Humidity/Temperature Transmitter



Measuring Range: 0...100% rH; 0...200 °C
 t_{max} 200 °C; p_{max} 25 bar
 Outputs: 2x 4-20 mA
 Accuracy: $\pm 2\%$ rH

DWF

Density Meter

Stainless Steel



Measuring Range: 700...1,900 g/L
 t_{max} 150 °C
 Process Connection: Flange ANSI 1" ... 2", DN 25 ... 50
 Optional: Transmitter Contacts



Accessories

REG

Automatic Flow Regulating Valve Brass, Stainless Steel



Viscosity: Max. 30 cSt
 t_{max} 572 °F; p_{max} 2,900 PSIG
 Connection: 3/4" NPT

REG-8

Automatic Flow Regulating Valve Brass, Stainless Steel



Viscosity: Max. 30 cSt
 t_{max} 500 °F; p_{max} 2,900 PSIG
 Connection: 3/4" ... 2" ANSI Wafer

NVM/NAD

Stainless Steel Needle Valve



t_{max} 250 °F; p_{max} 3,600 PSIG
 Connection: 1/8" ... 1-1/4" NPT, G 1/8" ... G 1-1/4"

MFR

Magnetic Filter Brass



t_{max} 392 °F; p_{max} 230 PSIG
 Connection: G 1/4" ... G 4"

SCI

Frequency to Current Converter



Compact DIN Rail Mounting Option
 Explosion-proof Enclosure Available
 Magnetic or High-level Pulse Inputs
 4-20 mA Loop Powered

RL

Power Supply, Latching and Isolation Relay



Power: 110 V_{AC}, 230 V_{AC}, 24 V_{DC}
 Excitation: 24 V_{DC}, 120 mA Regulated
 Input: Dry Contact or NPN/PNP, 15 mA Max
 Output: SPDT Relay, 10A@240V_{AC}, 8A@24V_{DC}

KFD-2/KFA-5

Intrinsically Safe Relay/Power Supply



For Dry Contacts or NAMUR-Type Switches
 Single or Dual Channel
 Standard Rail Mounting
 24 V_{DC} or 110 V_{AC} Power
 SPDT Relay Output

MSR

Contact Protection and Latching Relay



For Protection of Reed Contacts
 8A Max. Switching Capability
 1 or 2 SPDT Contacts

AUF

Compact In-line Display for Transmitters



For Transmitters with DIN 43650A Plugs
 Input: 4-20 mA, 2-wire or 3-wire
 User Programmable
 Optional Transistor Switch
 Custom Housing Colors for OEM Quantities

Accessories



INT/MRT

Integrating Rate Meter, Totalizer and Batcher



Display Values: Rate, Total, Batch
Display Type: 0.55" Red LED
5 Digit Rate, 6 Digit Total, 6 Digit Batch
Power Input: 110 V_{AC}, 220 V_{AC}, 12 - 24 V_{DC}
Panel Mount: NEMA 4x Front Panel

MPT/MPV

Universal/Process Panel Displays Ratemeter or Dual Line Rate and Total



MPT: Accepts Current, Voltage, TC, and RTD Inputs, Max/Min Display, Relays and 4-20 mA Options, Modbus®

MPV: Pulse or Analog Outputs, Displays both Rate and Total, 32 Point Linearization, Modbus®, Gate Function, Open Channel Flow

DAG-A/-S/-M

Digital Indication Units



Input: Current, Voltage, Temperature, Frequency, Resistance
Analog Output, Limit Contacts
Min/Max-Memory

DAG-T4/-Z2

Universal Panel Meter or Counter Electronics/Batch Controller



DAG-T4 Input:
Current, Voltage, Pt100, Thermocouples
DAG-Z2 Input: Frequency
Both: Limit Contacts, Sensor Supply

ZED

LCD Indicating Display and Controller



Input: Frequency
Output: Analog, 2 Limit Contacts, Sensor Supply

ZOK

Totalizer, Batching, and Monitoring Electronics



Input: Frequency
Analog Output, Limit Contacts, Sensor Supply, Battery Powered

ADI-1

Universal Input LED Display Controller



Display: 5-digit with 270° Bargraph
Input: Current, Voltage, Frequency
Analog Output, 2 Limit Contacts, Sensor Supply

ZLS-2

Multi-Channel Datalogger Display



Input: 4-20 mA, or Pt 100, Pt 500, Pt 1000
Interface, Sensor Supply

ZOE

Rate and Totalizing Display



Frequency Input, Pulse Output
Sensor Supply or Battery Powered



KOBOLD INSTRUMENTS INC

Manufacturer of Innovative Instrumentation

Australia

KOBOLD Messring GmbH
Sydney
☎ +61 (0) 428138232
✉ info.au@kobold.com

Austria

KOBOLD Holding Ges.m.b.H.
Vienna
☎ +43 (0) 1-786 5353
✉ info.at@kobold.com

Belgium

KOBOLD Instrumentatie NV/SA
Strombeek-Bever - Brussels
☎ +32 (0) 2 267 2155
✉ info.be@kobold.com

Bulgaria

KOBOLD Messring GmbH
Sofia
☎ +359 2 9544 412
✉ info.bg@kobold.com

Canada

KOBOLD Instruments Canada Inc.
Pointe Claire, Quebec - Montreal
☎ +1 514-428-8090
✉ info.ca@kobold.com

KOBOLD Instruments Canada Inc.
Mississauga, Ontario - Toronto
☎ +1 416-482-8180
✉ info.ca@kobold.com

China

KOBOLD Instruments
Trading Co., Ltd.
Pudong - Shanghai
☎ +86 (0) 21 583 645 79
✉ info.cn@kobold.com

KOBOLD Manufacturing Co., Ltd.
Xian
☎ +86 (0) 29 86210794/86211407
✉ wang@kobold.com

KOBOLD Instruments Trading
(Shanghai) Co. Ltd.
Tianjin
☎ +86 (0) 22 83719393
✉ hou@kobold.com

KOBOLD Instruments Trading
(Shanghai) Co. Ltd.
Guangzhou
☎ +86 (0) 20 38803380
✉ zhentx@kobold.com

KOBOLD Instruments Trading
(Shanghai) Co. Ltd.
Wuhan
☎ +86 (0) 27 87132425
✉ hushilei@kobold.com

KOBOLD Instruments Trading
(Shanghai) Co. Ltd.
An'hui
☎ +0551 65618167
✉ wu@kobold.com

Czech Republic

KOBOLD Messring GmbH
Brno
☎ +420 541 632 216
✉ info.cz@kobold.com

Egypt

KOBOLD Messring GmbH
Nasr City - Cairo
☎ +202 2 273 1374
✉ info.eg@kobold.com

France

KOBOLD Instrumentation S.A.R.L.
Cergy-Pontoise Cedex - Paris
☎ +33 (0) 1 34 21 91 15
✉ info.fr@kobold.com

KOBOLD Instrumentation S.A.R.L.
Dardilly - Lyon
☎ +33 (0) 4 72 16 21 94
✉ rollin@kobold.com

Germany

KOBOLD Messring GmbH
Hofheim/Taunus
☎ +49 (0) 6192-299-0
✉ info.de@kobold.com

KOBOLD Messring GmbH Werk II
Sindelfingen - Stuttgart
☎ +49 (0) 7031-8677-0
✉ maier@kobold.com

Heinrichs Messtechnik GmbH
Cologne
☎ +49 (0) 221-497 08-0
✉ info@heinrichs.eu

Hungary

KOBOLD Unirota Kft.
Nyiregyháza
☎ +36 42 342-215
✉ info.hu@kobold.com

India

KOBOLD Instruments Pvt Ltd.
Pune
☎ +91 93 70 221 190
✉ info.in@kobold.com

KOBOLD North India Region
New Delhi
☎ +91 95 60 028 453
✉ delhi.in@kobold.com

KOBOLD West India Region
Gujarat
☎ +91 97 12 233 533
✉ gujarat.in@kobold.com

Indonesia

KOBOLD Messring GmbH
Jakarta
☎ +62 21 849 328 59
✉ info.id@kobold.com

Iran

KOBOLD Messring GmbH
Tehran
☎ +98 912 177 2642
✉ info.ir@kobold.com

Italy

KOBOLD Instruments S.r.l.
Settimo M.se - Milan
☎ +39 02 33 572 101
✉ info.it@kobold.com

Malaysia

KOBOLD Instruments SDN BHD
Puchong, Selangor
☎ +60 (0) 3 8065 5355
✉ info.my@kobold.com

Mexico

KOBOLD Instruments Inc.
Querétaro
☎ +52 442 295 1567
✉ info.mx-mex@kobold.com

Netherlands

KOBOLD Instrumentatie BV
Arnhem
☎ +31 (0) 26-384 48 48
✉ info.nl@kobold.com

Peru

(Latinamerica Support Office)
KOBOLD LATAM S.A.C.
Lima
☎ +51 13307261
✉ info@koboldperu.com

Poland

KOBOLD Instruments Sp. z o.o.
Warsaw
☎ +48 (0) 22 666 18-94
✉ info.pl@kobold.com

KOBOLD Instruments Sp. z o.o.
Gliwice
☎ +48 730 202 100
✉ info.pl@kobold.com

Republic of Korea

KOBOLD Instruments Co., Ltd.
Koyang-City, Kyounggi-do
Seoul
☎ +82 (0) 31 903521-7
✉ info.kr@kobold.com

Romania

KOBOLD Messring GmbH Bu-
charest
☎ +40 21 456 05 60
✉ info.ro@kobold.com

Russia

OOO KOBOLD Instruments
Moscow
☎ +7 (499) 346-71-10
✉ info.ru@kobold.com

Singapore

KOBOLD Messring GmbH
Singapore
☎ +65 6227 1558-6366
✉ info.sg@kobold.com

Slovakia

KOBOLD Messring GmbH
Brno
☎ +420 541 632 216
✉ info.cz@kobold.com

Spain

KOBOLD Mesura S.L.U
Badalona - Barcelona
☎ +34 (0) 934 603 883
✉ info.es@kobold.com

Switzerland

KOBOLD Instruments AG
Dübendorf - Zürich
☎ +41 (0) 44-801 9999
✉ info.ch@kobold.com

Thailand

KOBOLD Instruments Ltd.
Bangkok
☎ +66 (0) 2 565 5705-6
✉ info.th@kobold.com

Tunisia

KOBOLD Messring GmbH
Tunis
☎ +216 7134 1518
✉ info.tn@kobold.com

Turkey

KOBOLD Instruments Ltd.
Istanbul
☎ +90 212 222 23 07
✉ info.tr@kobold.com

United Kingdom

KOBOLD Instruments Ltd.
Mansfield - Nottinghamshire
☎ +44 (0) 1623 427 701
✉ info.uk@kobold.com

USA

KOBOLD Instruments Inc.
Pittsburgh, PA
☎ +1 412-788-2830
✉ info@koboldusa.com

KOBOLD Eastern Region
Marlborough, MA
☎ +1 401-829-1407
✉ info.e@koboldusa.com

KOBOLD Mid-West Region
Medina, OH
☎ +1 412-389-1111
✉ info.mw@koboldusa.com

KOBOLD Western Region
Thousand Oaks, CA
☎ +1 310-912-2214
✉ info.w@koboldusa.com

KOBOLD South-Eastern Region
Cleveland, GA
☎ +1 843-812-1402
✉ info.se@koboldusa.com

Vietnam

KOBOLD Messring GmbH
Ho Chi Minh City
☎ +84 (0) 8 3551 0677
✉ info.vn-hcm@kobold.com



ATEX

