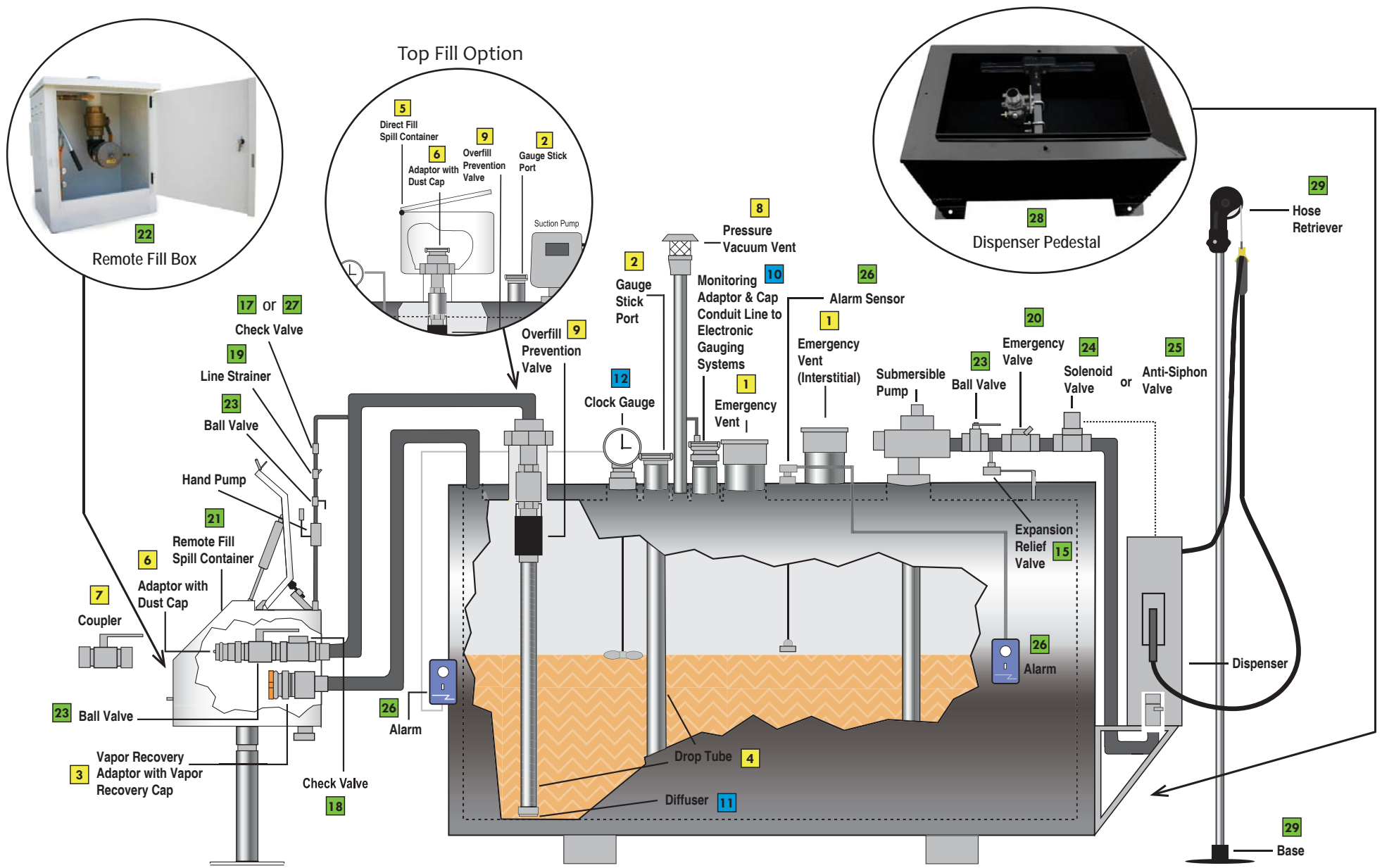


# Protected Double Wall Tank with Remote Fill EVR System



570 E. 7th Street, P.O. Box 238 | Dubuque, IA 52004-0238

t. 563.583.5701 | 800.553.4840 | f. 563.583.5028 | www.morbros.com

**LEGEND**

**CERTIFIED REQUIRED PRODUCTS**  
 These products are required on gasoline Phase 1 EVR aboveground storage tank systems.

**CERTIFIED OPTIONAL PRODUCTS**  
 These products are not required for EVR compliance; however, if a monitoring cap and adaptor, a drop tube diffuser, and/or a mechanical tank gauge are needed for a tank system, then these Morrison Bros. Co. CARB AST EVR products are required on the tank system.

**RECOMMENDED PRODUCTS**  
 These products are not considered part of the Phase 1 EVR AST system certified by CARB but may be needed to complete a tank system.

**CERTIFIED REQUIRED PRODUCTS**

**1** Fig. 244 Series Emergency Vent



**2** Fig. 305 Series Gauging Port Adaptor & Cap

*(Note: The mechanical gauge can be substituted for the gauge stick port.)*



**3** Fig. 323/323C Series Vapor Adaptor & Cap



**4** Fig. 419 Series Drop Tube



**5** Fig. 516 Series Spill Container



**6** Fig. 927/735DC Series Dry Disconnect Adaptor & Cap



**7** Fig. 928 Series Dry Disconnect Coupler



**8** Fig. 5885 Husky Series Pressure Vacuum Vent



**9** Fig. 9095 Series Overfill Prevention Valves



**CERTIFIED OPTIONAL PRODUCTS**

**10** Fig. 305 Series Monitoring Adaptor & Cap



**11** Fig. 539 Series Drop Tube Diffuser



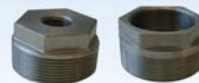
**12** Fig. 818 & 918 Series Mechanical Tank Gauge  
*(Note: The mechanical gauge can be substituted for the gauge stick port.)*



**13** Fig. 560, 561, 562, & 563 Series Extractors



**14** Fig. 184 & 184S Series Bushings



**RECOMMENDED PRODUCTS**

**15** Fig. 78 Expansion Relief Valve

**16** Fig. 157 Suction Pipe Strainer

**17** Fig. 158 Series Vertical Check Valve

**18** Fig. 246A Series Swing Check Valve

**19** Fig. 284 Series Line Strainer

**20** Fig. 346 Series External Emergency Valve

**21** Fig. 515 Series Remote Fill Spill Container

**22** Fig. 715 Series Remote Fill Box

**23** Fig. 691 Series Ball Valve

**24** Fig. 710 Series Solenoid Valve

**25** Fig. 910 or 912 Series Anti-Siphon Valve

**26** Fig. 918 Alarm & Sensor

**27** Fig. 958 Series Check Valve

**28** Fig. 434 Dispenser Pedestal

**29** Fig. 610 Hose Retriever